



PHONES

0 (800) 800 130
(050) 462 0 130
(063) 462 0 130
(067) 462 0 130

130
COM.UA

Internet store of
autogoods



SKYPE

km-130

CAR RECEIVERS — Receivers • Media receivers and stations • Native receivers • CD/DVD changers • FM-modulators/USB adapters • Flash memory • Facia plates and adapters • Antennas • Accessories |
CAR AUDIO — Car audio speakers • Amplifiers • Subwoofers • Processors • Crossovers • Headphones • Accessories | TRIP COMPUTERS — Universal computers • Model computers • Accessories |
GPS NAVIGATORS — Portable GPS • Built-in GPS • GPS modules • GPS trackers • Antennas for GPS navigators • Accessories | VIDEO — DVR • TV sets and monitors • Car TV tuners • Cameras • Videomodules
• Transcoders • Car TV antennas • Accessories | SECURITY SYSTEMS — Car alarms • Bike alarms • Mechanical blockers • Immobilizers • Sensors • Accessories | OPTIC AND LIGHT — Xenon • Bixenon • Lamps
• LED • Stroboscopes • Optic and Headlights • Washers • Light, rain sensors • Accessories | PARKTRONICS AND MIRRORS — Rear parktronic • Front parktronic • Combined parktronic • Rear-view mirrors
• Accessories | HEATING AND COOLING — Seat heaters • Mirrors heaters • Screen-wipers heaters • Engine heaters • Auto-refrigerators • Air conditioning units • Accessories | TUNING — Vibro-isolation
• Noise-isolation • Tint films • Accessories | ACCESSORIES — Radar-detectors • Handsfree, Bluetooth • Windowlifters • Compressors • Beeps, loudspeakers • Measuring instruments • Cleaners • Car seats
• Miscellaneous | MOUNTING — Installation kits • Upholstery • Grilles • Tubes • Cable and wire • Tools • Miscellaneous | POWER — Batteries • Converters • Start-charging equipment • Capacitors
• Accessories | MARINE AUDIO AND ELECTRONICS — Marine receivers • Marine audio speakers • Marine subwoofers • Marine amplifiers • Accessories | CAR CARE PRODUCTS — Additives • Washer fluid •
Care accessories • Car polish • Flavors • Adhesives and sealants | LIQUID AND OIL — Motor oil • Transmission oil • Brake fluid • Antifreeze • Technical lubricant



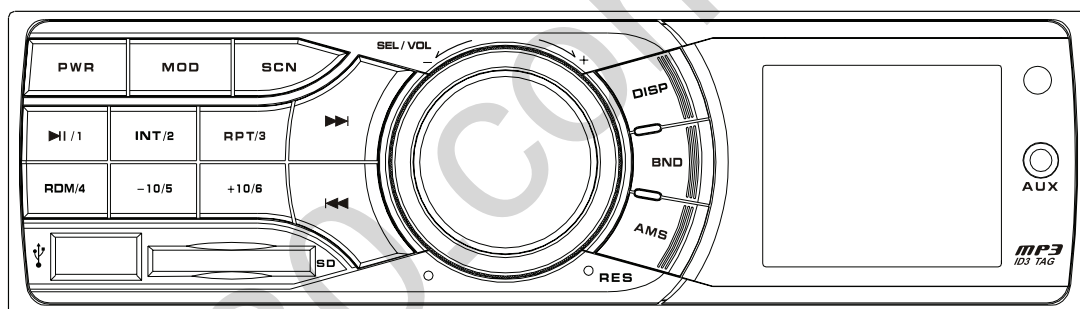
In store "130" you can find and buy almost all necessary goods for your auto in Kyiv and other cities, delivery by ground and postal services. Our experienced consultants will provide you with exhaustive information and help you to chose the very particular thing. We are waiting for you at the address

<https://130.com.ua>

SHUTTLE

Service Manual

SUD-350



USB/SD проигрыватель

Руководство по установке и эксплуатации



CONTENTS

Specification.....	02
Disassembly Instructions.....	03
Operation Check.....	04
Alignment and adjustment.....	05
Troubleshooting.....	06
Printed Circuit Boards.....	08
Wiring Diagram.....	09
Electrical Parts List.....	17
Exploded View.....	18
Mechanical Parts List.....	24
Schematic Diagrams.....	27
	30

SPECIFICATION

General

Power Supply Requirements: DC 14.4V, Negative Ground
Load Impedance: 4 ohms
Maximum Output Power: 25W x 4 (CH)

Chassis Dimensions: 178 x 130x 50mm (W x D x H)
Current Drain: 10A

Tone Controls

Bass (at 100Hz): +10dB / -10dB
Treble (at 10K): +10dB / -10dB

USB/SD MUSIC Player

Signal to Noise Ratio: More than 60dB
Channel Separation: More than 60dB
Frequency Response: 20Hz - 20KHz

FM Radio

Frequency Coverage (MHz): 87.5 - 108MHz
IF : 10.7MHz
Sensitivity (S/N-30dB): 12dBu
Stereo Separation: >30dB

AM Radio

Frequency Coverage (KHz): 522 - 1620KHz
IF : 450KHz
Sensitivity (S/N-20dB): <42dBu

Remarks:

Specifications subject to change without notice

DISASSEMBLY INSTRUCTIONS

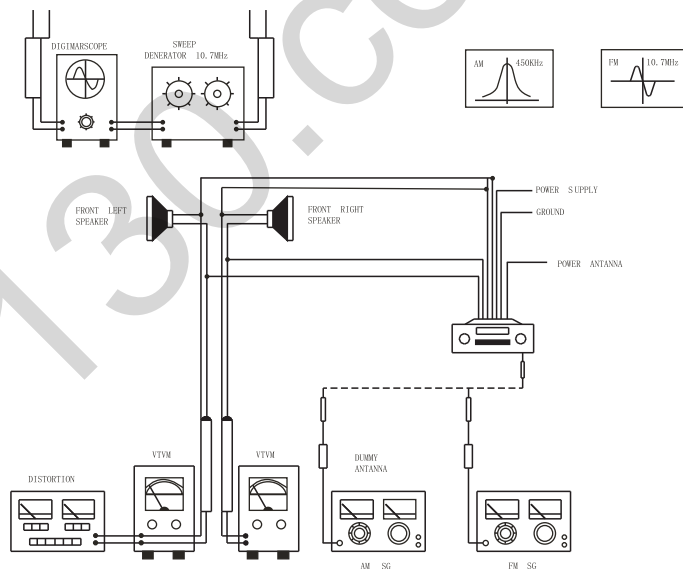
1. **Mounting Box:** Slide out the mounting box in parallel.
2. **Top cover:** Release screw at the back of top cover, and pull out the cover.
3. **Bottom Cover:** Turn over the unit to release the screws at the back of bottom cover and one the top surface. Pull out the cover.
4. **Disassemble the Panel:**
Pull out the Front panel.
Release the left side and right side screws attached to with the base.
Pull the base out of the unit.
5. **Disassemble the mechanism deck:**
There are two screws to lock the mechanism deck at front ,Unscrew both of them.
Remove the solder from fixed wires on the main, and remove the deck.
6. **Disassemble the key board :**
Release four screws .
Remove the back panel .
Then remove the key board.
7. Unscrew the left side bracket and the right side bracket. There are two screw on each side.
8. **Disassemble the main board :**
9. Unscrew two screw at the leef bracket
remove the solder from the Tuner, and main board.
Uncrew two screw ar the ANT. Remove the solder from fixed wires.
Unscrew two crew at the Heatsink.
Remove the main board.

OPERATION CHECK

GENERAL SPECIFICATIONS OF SIGNAL

Standard frequency	AM	1000 KHz (600, 1400 KHz)
	FM	98.0 MHz (90.0, 106.0 MHz)
Signal output	AM	74 dB/uV
	FM	60 dB/uV
Modulation	AM	1 kHz 30%
	FM mono	1 KHz 22.5KHz
AF output level	AM/FM	
Power source voltage	DC 14.4 V (backup voltage is the same as this)	
AF load impedance	4 ohm pure resistance	
Balance	Mechanical center	
Tone	Mechanical center	

The signal strength read in this section is voltage on the antenna.



Note : Use an RF generator for the AM band and a sweep generator for the FM band.

ADJUSTMENT

FM IF/RF ADJUSTMENT

Equipment Required

FM IF/RF signal generator
 Oscilloscope
 Solid-state voltmeter (SSVM)
 Frequency counter
 Regulated DC power supply
 DC digital voltmeter
 Distortion meter

FM IF and RF Alignment Using FM Signal Generator

Note : Press the radio power switch to turn on the radio. Signal generator output must be kept as low as possible to avoid overload and clipping.

Setup	Generator Coupling	Generator	Display Setting	Indicator Coupling	Adjust ment	Remarks
IF	FM RF signal generator to ANT i/p	10.7 MHz sweep output 60 dB/uV	98.0 Mhz	Connect oscilloscope to Ic1 pin 3 & ground	T1	Adjust so that maximum AF output power and minimum distortion.
RF Low High	Signal generator to antenna receptacle	90MHz Int 1 KHz 22.5KHz mod. output 30dB/uV 106MHz Int 1 KHz 22.5 KHz mod. output 30 dB/uV	90 MHz 106 MHz	SSVM across speaker	C3 L1	Adjust AF output power for maximum

ADJUSTMENT

AF/RF ADJUSTMENT

Equipment Required

- >AF/RF signal generator
- >Oscilloscope
- >Solid-state voltmeter (SSVM)
- >Frequency counter
- >Regulated DC power supply
- >DC digital voltmeter
- >Distortion meter

AM/RF and RF Alignment Using AM Signal Generator

Note : Press the radio power switch to turn on the radio. Signal generator output must be kept as low as possible to avoid overload and clipping.

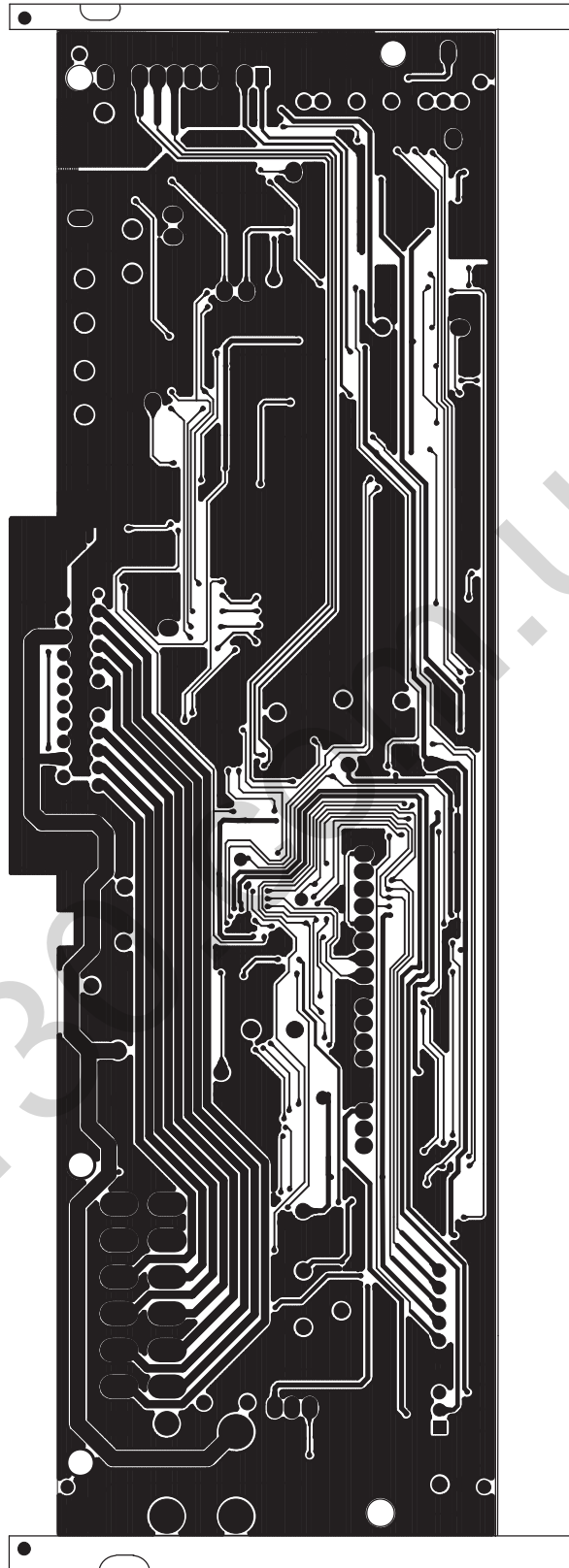
Setup	Generator Coupling	Generator	Display Setting	Indicator Coupling	Adjust ment	Remarks
RF	Signal generator to antenna receptacle	600 KHz Int 1 KHz 30% mod. Output 74 dB/uV	600 Khz	SSVM across speaker	C1	Adjust AF output power for maximum
RF Cont.	Signal generator to antenna receptacle	1400 KHz Int 1 KHz 30% mod. 74 dB/uV	1400 Mhz	SSVM across speaker	L3	Adjust AF output power maximum

TROUBLE SHOOTING

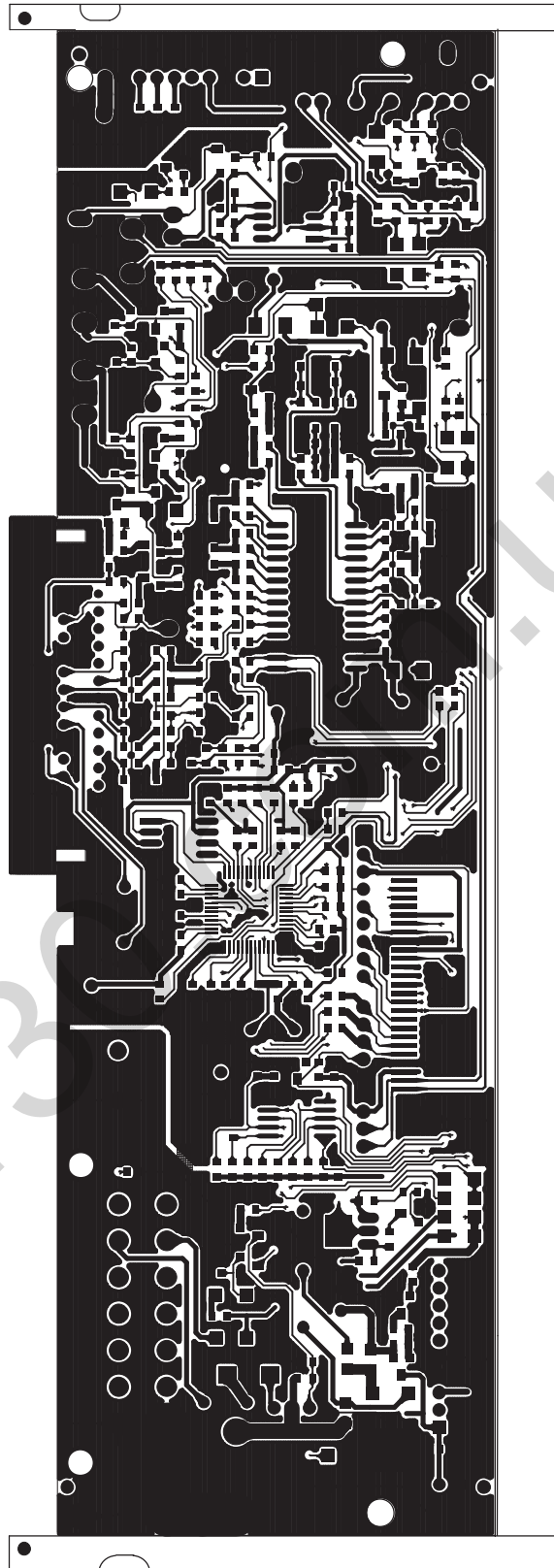
Before going through the check list, check wiring connection. If any of the problems persist after checklist has been made, consult your nearest service dealer

Symptom	Causes	Solution
No Power	The car ignition key not been switched on	If the power supply is properly connected to the car accessory terminal, switch the ignition key to ACC
	The fuse is blown	Replace a new fuse
No Sound	Volume is at minimum	Adjust volume to desired level
	Wiring is not properly connected	Check wiring connection
The Operation Keys Do Not Work	The built-in microcomputer is not operating properly due to Interference	Press the RESET button or reinstall the front panel properly
The Radio or Automatic Selection Does Not Work	The antenna cable is not connected correctly	Connect the antenna cable correctly
	The signals are too weak	Select the station manually

PRINTED CIRCUIT BOARDS

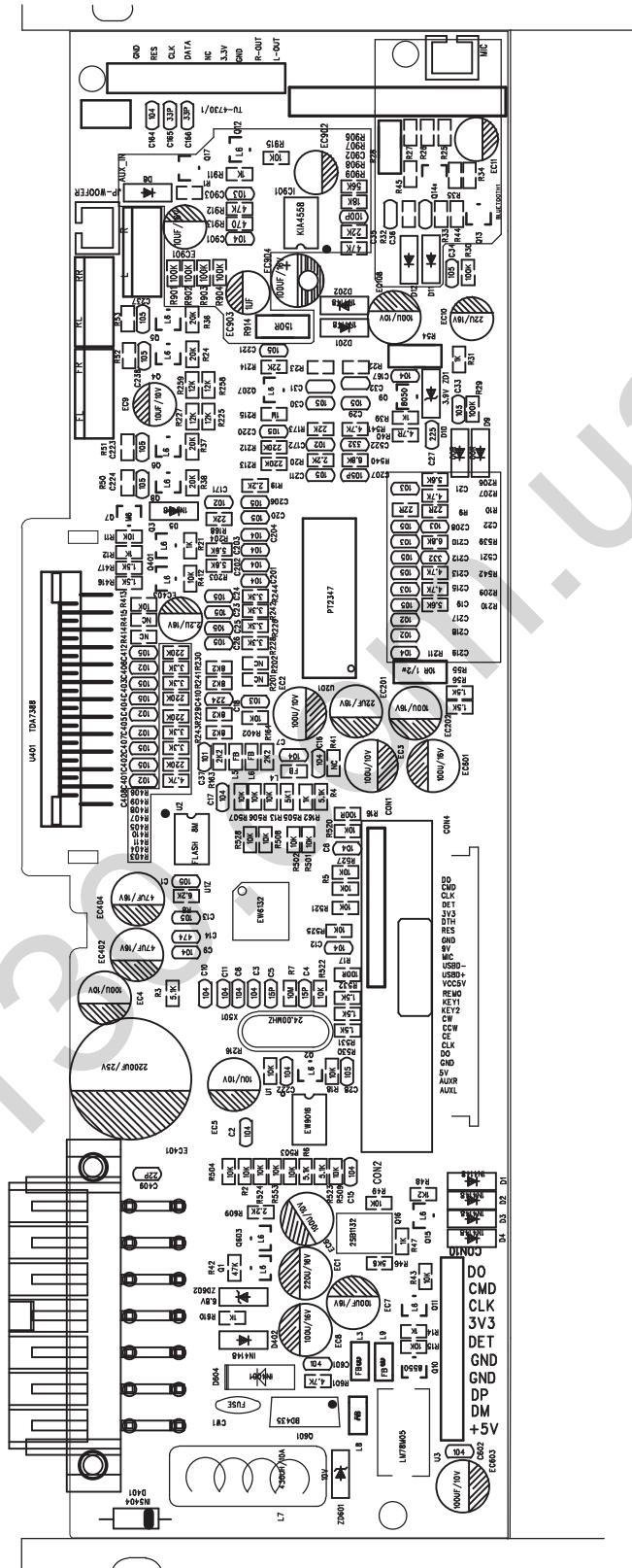


PRINTED CIRCUIT BOARDS



PRINTED CIRCUIT BOARDS

MAIN BOARD (TEXT)

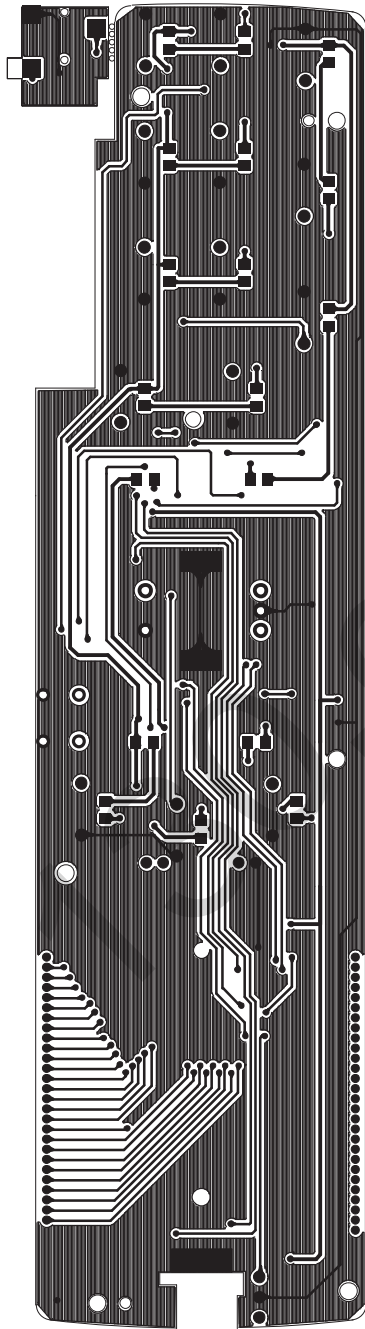


PRINTED CIRCUIT BOARDS

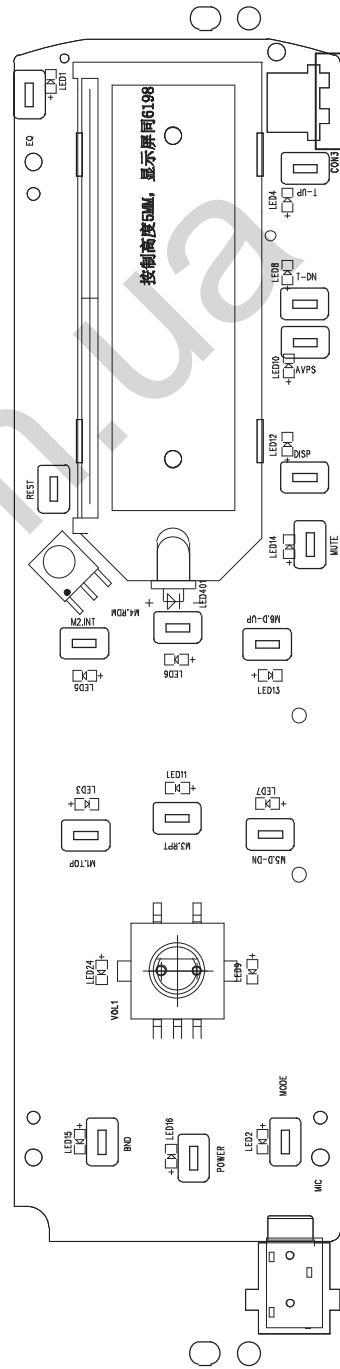


PRINTED CIRCUIT BOARDS

KEY-TOP

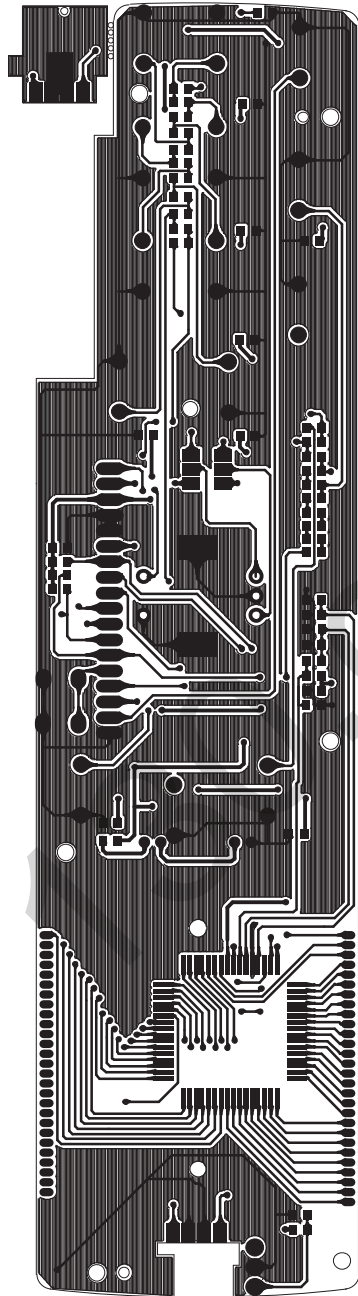


KEY-TOP

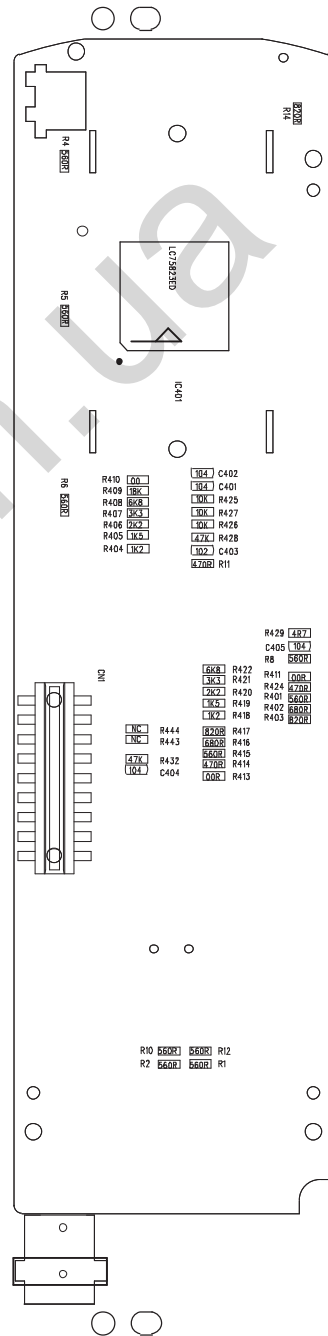


PRINTED CIRCUIT BOARDS

KEY-BOTT

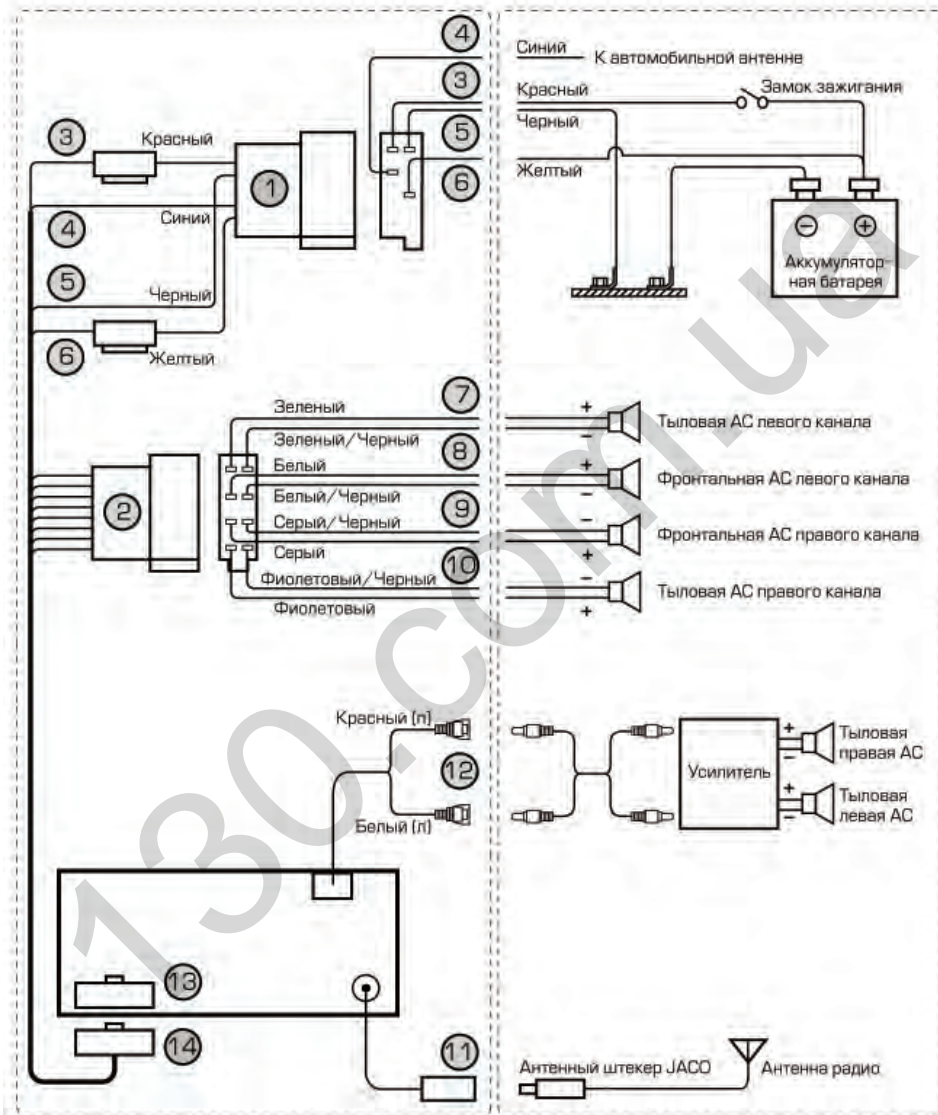


KEY-BOTT



WIRING DIAGRAM

WIRE CONNECTION DIAGRAM



Electical Parts List

06-103118-2900-0C-N	PY-3118M3-MB-4*25W (3系列主板件部分)+ISO
04-024001-0100	插件晶体 24.000MHz 30PPM S型 30PPM S型
07-113060-0101	热敏电阻 300mA 60V T60-030
08-210222-1029	电解电容 16V 2200UF ±20% 10*20
10-090435-0201	插件三极管 2SD435 TO-251 40V, 3A, 10W(塑封)
11-037388-0600	IC TDA7388
12-115401-0000	普通二极管 IN5401
16-613103-0001	插件电感 $\phi=1.0\text{mm}$ 1mH
34-020209-0520	9PIN弯针 CD. DECK. 间2.0MM
19-305101-1201	10P扞座 弯脚 间距2.0mm
21-306250-1011	RCA输出线 250MM (灰色)
21-009090-1000	90MM 9P排线(一端插头一端焊线)
33-040340-0001	天线插座 ANT
34-010114-0700	输出线插座 14PIN
34-010114-0706	14P输出线 公插带2个保险丝(一个1A, 一个10A)(ISO插)
06-103118-2900-1C-N	PY-3118M3-MB-4*25W (3系列主板外发件部分)+ISO
06-103118-2900	PY-3118M3-MB-PCB 186.1*111.9*1.2MM(双面板) 1/2
07-080000-9900	贴片电阻 0 5% 0603
07-080000-0800	贴片电阻 0 5% 1206 1/4W
07-080100-0800	贴片电阻 SMD 10R 1206 5%
07-080101-9900	贴片电阻 100 5% 0603
07-080102-9900	贴片电阻 1K 5% 0603
07-080103-9900	贴片电阻 10K 5% 0603
07-080104-9900	贴片电阻 100K 5% 0603
07-080105-9900	贴片电阻 1M 5% 0603
07-080106-9900	贴片电阻 10M 5% 0603
07-080122-9900	贴片电阻 1K2 5% 0603
07-080123-9900	贴片电阻 12K 5% 0603
07-080152-9900	贴片电阻 1K5 5% 0603
07-080203-9900	贴片电阻 20K 5% 0603
07-080220-9900	贴片电阻 22 5% 0603
07-080222-9900	贴片电阻 2K2 5% 0603
07-080223-9900	贴片电阻 22K 5% 0603
07-080224-9900	贴片电阻 220K 5% 0603
07-080332-9900	贴片电阻 3K3 5% 0603
07-080472-9900	贴片电阻 4K7 5% 0603
07-080473-9900	贴片电阻 47K 5% 0603
07-080183-9900	贴片电阻 18K 5% 0603
07-080478-9900	贴片电阻 4R7 5% 0603
07-080512-9900	贴片电阻 5K1 5% 0603

Electical Parts List

07-080562-9900	贴片电阻 5K6 5% 0603
07-080622-9900	贴片电阻 6K2 5% 0603
07-080682-9900	贴片电阻 6K8 5% 0603
08-216100-2022	电解电容 10uF/25V ±20% φ4X5mm 排带2.5MM脚距,平底部伸出
08-216101-1029	电解电容 100UF/16V ±20% φ6.3X5mm 排带2.5MM脚距,平底部伸出
08-216220-1022	电解电容 22UF/16V ±20% φ4X5mm 排带2.5MM脚距,平底部伸出
08-216228-5022	电解电容 2.2UF/50V ±20% φ4X5mm 排带2.5MM脚距,平底部伸出
08-216221-1029	电解电容 220UF/16V ±20% φ6*7mm 排带2.5MM脚距,平底部伸出
08-216470-1022	电解电容 47uF/16V ±20% φ4X5mm 排带2.5MM脚距,平底部伸出
09-088102-1300	贴片电容 102/50V 0603 ±10%
09-088103-1300	贴片电容 103/50V 0603 ±10%
09-088104-1300	贴片电容 104/25V 0603 ±10%
09-088105-1300	贴片电容 105/16V 0603 ±10%
09-088150-1300	贴片电容 15P/50V 0603 ±5%
09-088220-1300	贴片电容 22P/50V 0603 ±5%
09-088224-1300	贴片电容 224/25V 0603 ±10%
09-088225-1300	贴片电容 225 10% 0603 10v
09-088330-1300	贴片电容 33P/50V 0603 ±5%
09-088332-1300	贴片电容 332/50V 0603 ±10%
09-088474-1300	贴片电容 474/16V 0603 ±10%
09-088101-1300	贴片电容 100P/50V 0603 ±5%
10-178050-7170	贴片三极管 SOT-23, C8050
10-178550-7170	贴片三极管 SOT-23, C8550
10-021132-1280	贴片三极管 SOT-89, 2SB1132
11-EW6132-0400	EW6132(解码)
11-025T80-0401	FLASH 8M 华邦(8035解码专用) S0-8
11-EW9016-0400	EW9016(MCU)
11-007313-0401	四声道输出数字音频控制处理IC 7313
11-047805-0H00	IC LM7805 T0-252
12-114001-0011	贴片二极管 IN4001 SOD-106
12-214148-0011	贴片二极管 IN4148 1206 圆柱形
12-300039-0011	稳压贴片二极管 3V9 1206 圆柱形
12-300068-0021	贴片稳压二极管 6.8V 1/2W
12-300100-0021	贴片稳压二极管 10V (9.90V~10.02V)
16-A00000-1003	贴片磁珠 FB 0Ω 0603
16-A00000-0700	贴片磁珠 FB 0Ω 0805

Electical Parts List

06-503118-1900-0-N	3118M3-CONB部分(主板连接板)
06-903118-1900	222.1*63.8*1.6MM(单面板)/10PCS
34-010207-0600	插针 7PIN PH=2.54MM 弯脚90度
34-010203-0600	插针 3PIN PH=2.54MM 弯脚90度
19-010091-1001	SD卡座 SDBMF-009XXBOXZ
19-220041-1002	USB插座 USB-A06-4DIP(黑色)大头插座
21-010060-1000	60MM 10P排线(一端插头一端焊线)
06-503118-1900-1-N	3118M3-CONB部分(主板连接板)外发件
06-503118-1900	183.1*132.9*1.6MM(单面板)/4 PCS
08-216101-0029	电解电容 100UF/10V ±20% φ5X5mm 排带2.5MM脚距,平底部伸出
09-088104-1300	贴片电容 104/25V 0603 ±10%
06-M33118-2801-0C-N	PY-3118M3前板(配新MCU-EW9016)通用翠绿灯
14-500600-0004	插脚控制5.0
14-500600-0010	控制 直插6*9.0MM TC-6615-9H
14-B00600-0009	3方向开关 RS1101
19-210031-1301	贴片AUX输入座 黑色(6128)
28-20C000-3118	3118-M3 负片黑膜透光字显示屏(42*38.5.*2.8MM)55针脚
36-023118-2101	绿灯背光源 HYZ-993(一只灯)
74-020860-0220	遥控接收头 8*6MM(15M/5V)
06-M33118-2801-1C-N	PY-3118M3前板(外发件)(配新MCU-EW9016)通用翠绿灯
06-M33118-2801	PY-3118M3-KB FR-4 1.2 87.1*176.4/2pcs
07-080478-9900	贴片电阻 4R7 5% 0603
07-080000-9900	贴片电阻 0 5% 0603
07-080122-9900	贴片电阻 1K2 5% 0603
07-080103-9900	贴片电阻 10K 5% 0603
07-080152-9900	贴片电阻 1K5 5% 0603
07-080682-9900	贴片电阻 6K8 5% 0603
07-080222-9900	贴片电阻 2K2 5% 0603
07-080332-9900	贴片电阻 3K3 5% 0603
07-080471-9900	贴片电阻 470 5% 0603
07-080473-9900	贴片电阻 47K 5% 0603
07-080561-9900	贴片电阻 560 5% 0603
07-080681-9900	贴片电阻 680 5% 0603
07-080821-9900	贴片电阻 820R 5% 0603
07-080183-9900	贴片电阻 18K 5% 0603
09-088102-1300	贴片电容 102/50V 0603 ±10%
09-088104-1300	贴片电容 104/25V 0603 ±10%
11-475823-0500	IC LP75823
11-006523-0500	液晶屏驱动IC SC 6523(通用)
17-020603-0207	贴片灯3.3V LED 0603绿光
06-803118-2900-0-N	3118M3-TUNE-CONB部分(收音板)
04-032768-0100	插件 32.768KHZ 圆柱形晶体 3X8MM

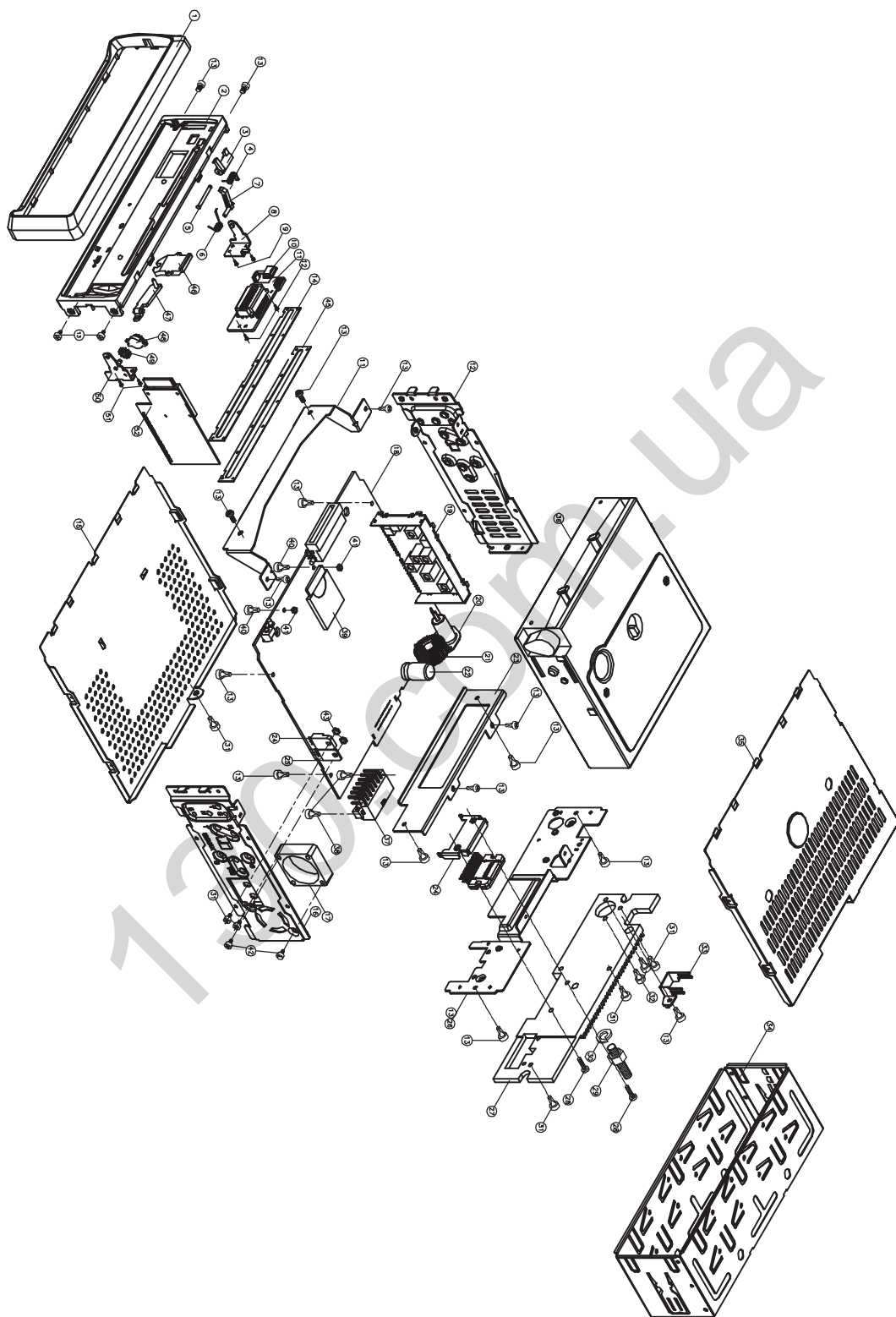
Electical Parts List

09-088180-1300	贴片电容 18/50V 0603 ±5%
09-088100-1300	贴片电容 10P/50V 0603 ±5%
09-088102-1300	贴片电容 102/50V 0603 ±10%
09-088103-1300	贴片电容 103/50V 0603 ±10%
09-088104-1300	贴片电容 104/25V 0603 ±10%
09-088105-1300	贴片电容 105/16V 0603 ±10%
09-088220-1300	贴片电容 22P/50V 0603 ±5%
09-088568-1300	贴片电容 5.6P/50V 0603 ±5%
09-088224-1300	贴片电容 224/25V 0603 ±10%
12-214148-0011	贴片二极管 IN4148 1206 圆柱形
11-006621-0800	TEF 6621 SOT-32
16-0A1188-1000	贴片电感 1.8UH 0603
16-0A1228-1000	贴片电感 220NH 603
16-0A1279-1000	贴片电感 0603 270nH
16-0A1479-1000	贴片电感 0603 470nH
16-000338-0000	贴片电感 3.3UH SMD 1206
06-306138-2803-0D-N	6138U前板部分-18P插座(通用翠绿色)+数码IC
14-506512-0000	按制 直插6*4.3MM
13-118000-2101	VOL 贴片 编码器
17-020304-1002	绿色LED(方形超亮) 3.3V LX-φ2X3X4MM
19-210031-1301	贴片AUX输入座 黑色(6128)
21-511050-0001	USB 线 包装用
28-203790-2701	6128-CD 负片黑膜透光字显示屏(80*21.2*2.8MM)
29-A00000-0001	导电胶 77.8x7.25x2MM
19-121182-1401	18位公插 HT-M18-2.5B
74-020860-0220	遥控接收头 8*6MM(15M/5V)
06-306138-2803-1B-N	6138U前板部分-18P插座(通用翠绿色)+数码IC(外发件)
06-306138-2803	6138U 前板 FR-4 1.2 83.4*184.6/2pcs
07-080000-9900	贴片电阻 0 5% 0603
07-080478-9900	贴片电阻 4R7 5% 0603
07-080471-9900	贴片电阻 470 5% 0603
07-080561-9900	贴片电阻 560 5% 0603
07-080681-9900	贴片电阻 680 5% 0603
07-080821-9900	贴片电阻 820R 5% 0603
07-080122-9900	贴片电阻 1K2 5% 0603
07-080152-9900	贴片电阻 1K5 5% 0603
07-080222-9900	贴片电阻 2K2 5% 0603
07-080332-9900	贴片电阻 3K3 5% 0603
07-080682-9900	贴片电阻 6K8 5% 0603
07-080123-9900	贴片电阻 12K 5% 0603
07-080103-9900	贴片电阻 10K 5% 0603

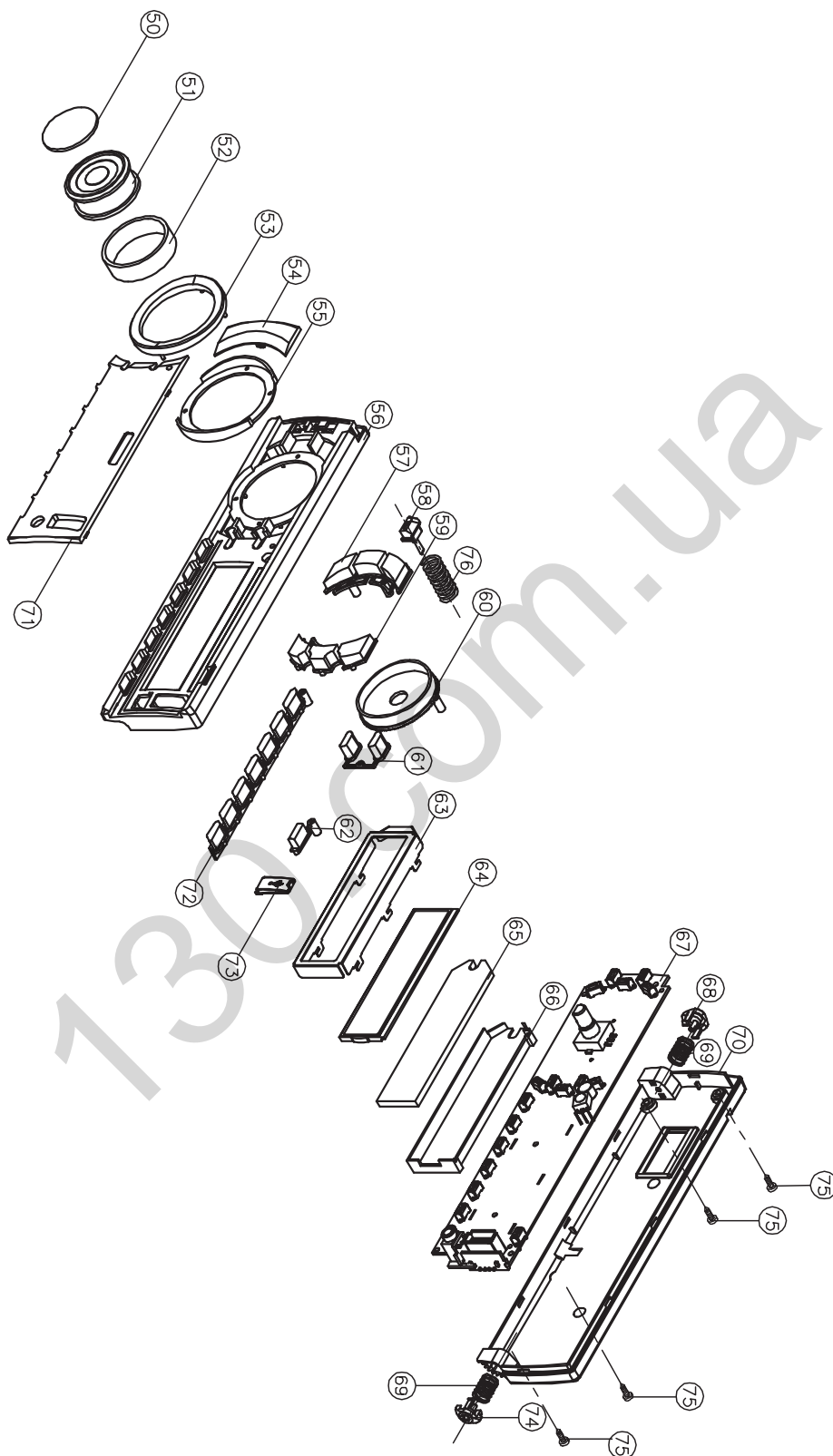
Electical Parts List

16-712472-0001	插件色环电感 472uH 0511
29-603001-0708	高频屏蔽线 50MM
34-010210-0600	插针 10PIN PH=2.0MM 弯脚90度
06-803118-2900-1-N	3118M3-TUNE-CONB部分(收音板)外以件
06-803118-2900	123.9*43.3*1.2MM(双面板) /10PCS
07-080000-9900	贴片电阻 0 5% 0603
07-080103-9900	贴片电阻 10K 5% 0603
07-080224-9900	贴片电阻 220K 5% 0603
07-080473-9900	贴片电阻 47K 5% 0603
09-088101-1300	贴片电容 100P/50V 0603 ±5%
09-088103-1300	贴片电容 103/50V 0603 ±10%
09-088104-1300	贴片电容 104/25V 0603 ±10%
09-088105-1300	贴片电容 105/16V 0603 ±10%
09-088223-1300	贴片电容 223/50V 0603 ±10%
09-088330-1300	贴片电容 33P/50V 0603 ±5%
09-088474-1300	贴片电容 474/16V 0603 ±10%
10-009018-0170	贴片三极管 SOT-23, S9018
10-178050-7170	贴片三极管 SOT-23, C8050
11-004730-0400	IC SI4730
12-214148-0011	贴片二极管 IN4148 1206 圆柱形
16-0A1279-1000	贴片电感 0603 270nH
16-0A1470-0000	贴片电感 0805 47uH
74-822801-1005	CD MP3遥控 SHUTTLE

EXPLODED DRAWING



EXPLODED DRAWING



EXPLODED DRAWING INSTRUCTION

52		SD CAR PCB			1				
51	59-022301-2008	SCREW			2				
50	44-078198-0000	GEAR			1				
49	41-158198-0000	RIGHT BRACKET	POM		1				
48	68-008118-0100	GEAR			1				
47	41-128198-0000	PC SHEET	ABS		1				
46	41-688198-0000	BASE REF	PMMA		1				
45	48-036118-0100	LEVER OPEN	PC		1				
44	48-036118-0100	PC SHEET			1				
43	59-065103-3025	NUT			2				
42	59-012103-3014	SCREW			0				
41	59-065103-2020	NUT			2				
40	59-022101-2005	SCREW			2				
39		SD CARD			1				
38	59-022303-2608	SCREW			2				
37		SOCKET			1				
36		DECK			1				
35	43-016118-0110	TOP COVER			1				
34	43-088118-0110	SHORT SLEEVE			1				
33	44-036118-0101	LINE CLIP			1				
32	59-012103-3004	SCREW			2				
31	59-012103-3008	SCREW			6				
30	46-051309-0400	SPRING WASHER			1				
29	59-085403-5021	SCREW			1				
28	59-012103-3013	SCREW			2				
27	43-611801-0001	HEAT SINT			1				
26	43-086118-0110	BACK BRACKET			1				
25		IC7384			1				
24	44-058128-0100	IC7384 BRACKET			1				
23	44-026118-0100	REAR DEACK			1				
22		CAP			1				
21		TRANSFORM			1				
20		ANT			1				
19		TUNNER			1				
18		MAIN PCB			1				
17		FAN			0				
16	43-076118-0110	RIGHT SIDE			1				
15	43-026118-0110	BOTTOM COVER			1				
14	71-112812-0001	CD WINDOW DOOR			1				
13	59-012103-2604	SCREW			18				
12		SCREW			2				
11		CONNECT PCB			1				
10	41-118198-0000	EJ KNOB	ABS		1				
9		SCREW			2				
8	44-068198-0100	LEFT BRACKET			1				
7	41-148198-0000	LEVER OPEN			1				
6	45-502038-0500	PUSH BLOSK SPRING	SECC		1				
5	42-018198-0100	SHAFT COPPER	COPPER		1				
4	45-902034-0500	LOCK SPRING			1				
3	41-138198-0000	LOCK	ABS		1				
2	40-018198-0000	BASE	ABS		1				
1	40-048198-0000	TRIM PLATE	ABS		1				
NO.	PART NUBER	DESCRIPTION	MATERIAL	QTY	NO.	PART NUBER	DESCRIPTION	MATERIAL	QTY
76	45-500031-0200	SPRING		1	27	43-611801-0001	HEAT SINT		1
75	59-022301-2010	SCREW	ABS	4	26	43-086118-0110	BACK BRACKET		1
74	41-178198-0000	ROTOR AXIAL	ABS	1	25		IC7384		1
73	41-728198-0000	LCD BRACKET	ABS	1	24	44-058128-0100	IC7384 BRACKET		1
72	41-018238-0000	KONB 1-6	ABS	1	23	44-026118-0100	REAR DEACK		1
71	47-018238-0000	LENS	PVC	1	22		CAP		1
70	40-038238-0000	BOTTOM	ABS	1	21		TRANSFORM		1
69	45-800056-0400	ROTOR SPRING			20		ANT		1
68	41-168198-0000	ROTOR AXIAL LEFT	ABS	1	19		TUNNER		1
67		KNOB PCB		1	18		MAIN PCB		1
66	41-728198-0000	LCD BRACKET	ABS	1	17		FAN		0
65	41-688198-0000	LCD REF	PMMA	1	16	43-076118-0110	RIGHT SIDE		1
64		LCD		1	15	43-026118-0110	BOTTOM COVER		1
63	44-068198-0000	LCD BRACKET	SECC	1	14	71-112812-0001	CD WINDOW DOOR		1
62	41-058238-0000	KNOB DISP	ABS	1	13	59-012103-2604	SCREW		18
61	41-068238-0000	KNOB BND	ABS	1	12		SCREW		2
60	41-348238-0000	REFLECTOR	ABS	1	11		CONNECT PCB		1
59	41-048238-0000	KNOB-LOC	ABS	1	10	41-118198-0000	EJ KNOB	ABS	1
58	41-108238-0000	REL-KNOB	ABS	1	9		SCREW		2
57	41-038238-0000	KNOB-MOD	ABS	1	8	44-068198-0100	LEFT BRACKET		1
56	40-028238-0000	PANEL	ABS	1	7	41-148198-0000	LEVER OPEN		1
55	41-328238-0000	DEFORATION BLOCK	ABS	1	6	45-502038-0500	PUSH BLOSK SPRING	SECC	1
54	41-028238-0000	KNOB-POWER	ABS	1	5	42-018198-0100	SHAFT COPPER	COPPER	1
53	41-338238-0000	CIRCLE KNOB	PMMA	1	4	45-902034-0500	LOCK SPRING		1
52	57-900004-0000	LOGO	RUBBER	1	3	41-138198-0000	LOCK	ABS	1
51	41-608238-0000	KNOB-VOL	ABS	1	2	40-018198-0000	BASE	ABS	1
50	41-308238-0000	VOLUME KNOB	ABS	1	1	40-048198-0000	TRIM PLATE	ABS	1

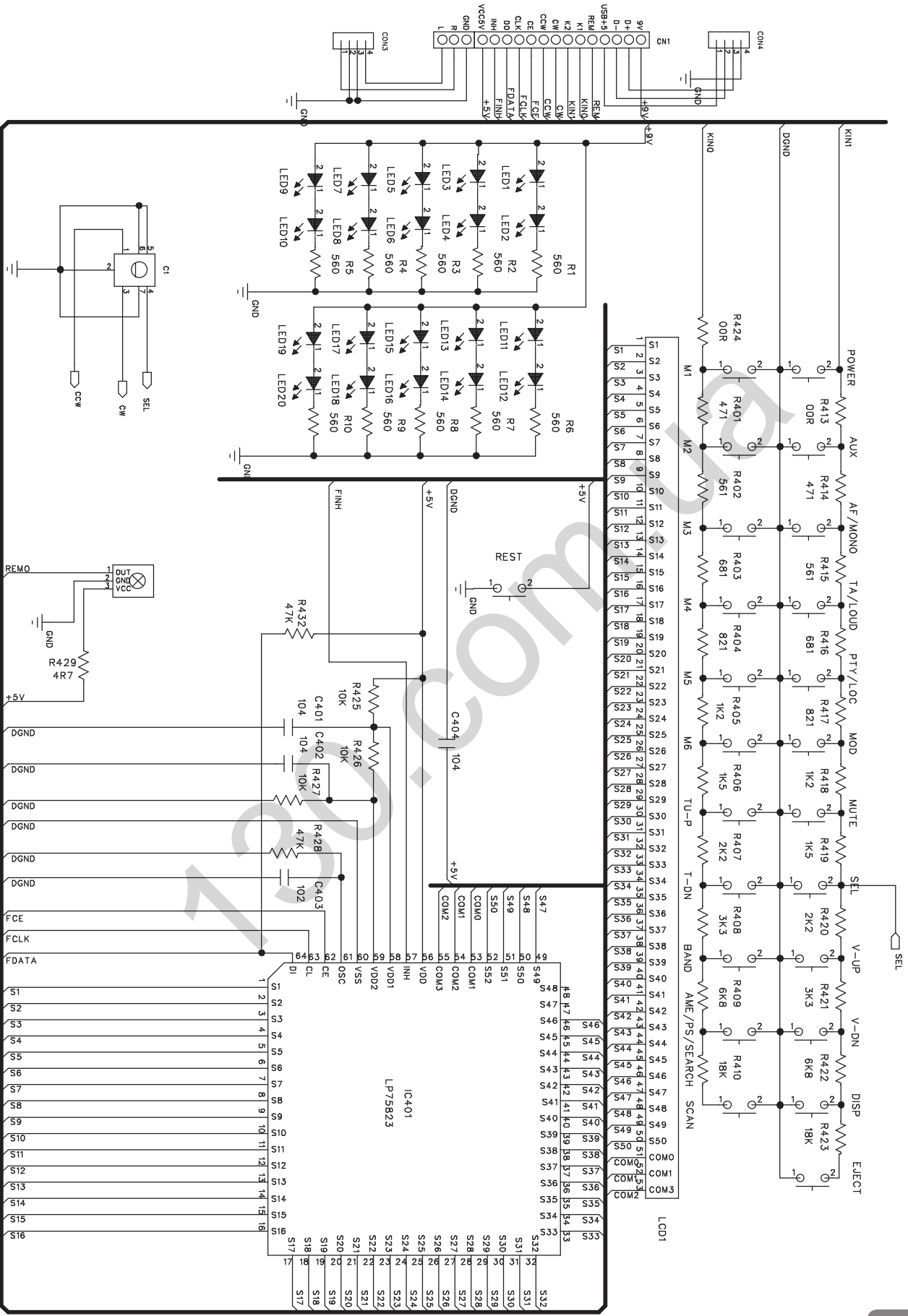
Mechanical Parts List

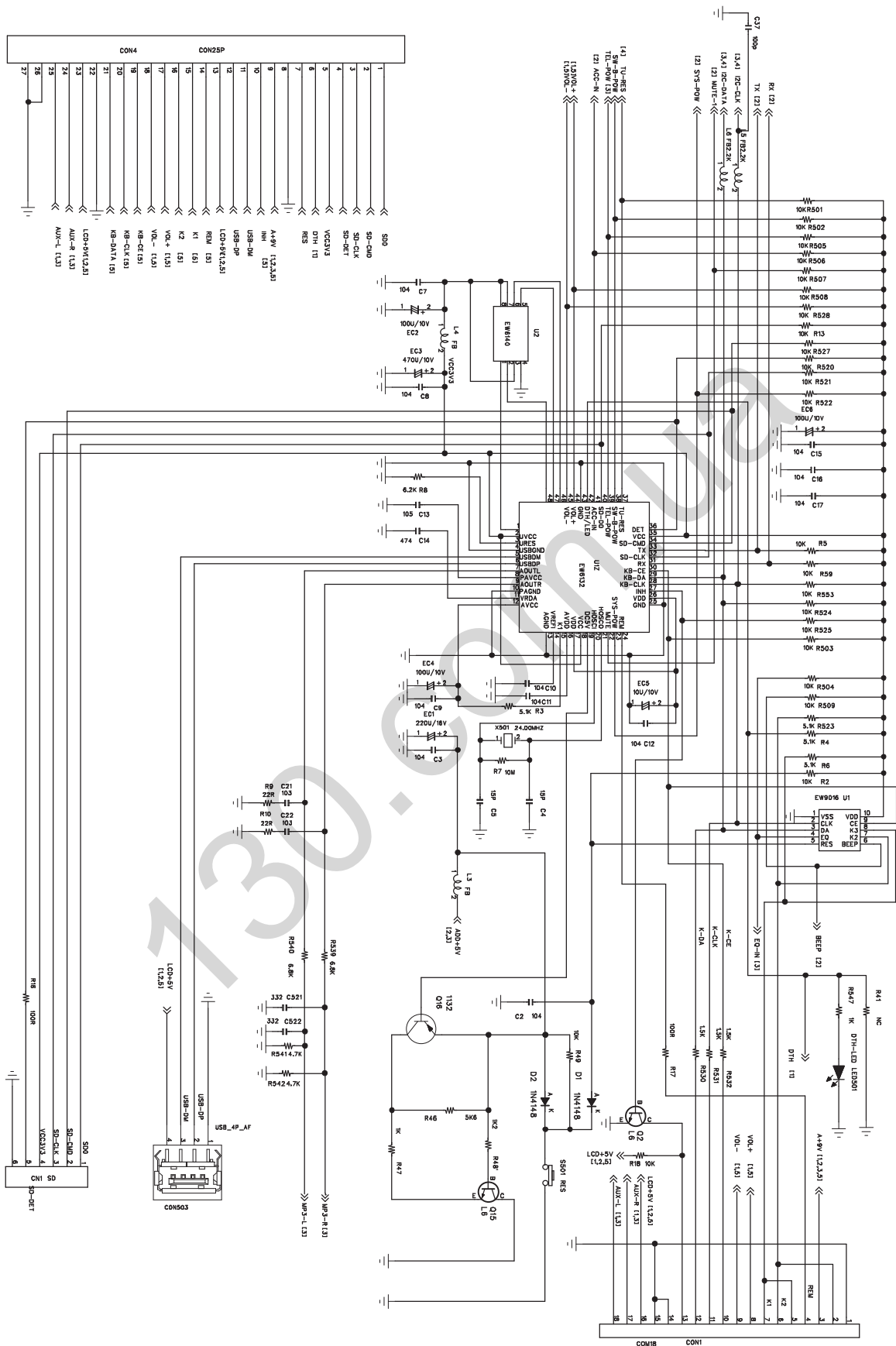
90-3118M3-0106	PY-3118M3 主结构料 B3-2010-38D
43-013118-0110	面盖 0.6MM G. S. S
43-023118-0110	底盖 0.6MM G. S. S
43-048118-0110	后支架A 1.0MM G. S. S. 耳插位在右
43-063118-0110	左侧架 0.8MM G. S. S
43-073118-0110	右侧架 0.8MM G. S. S
43-812802-1000	散热片, 14PIN 压铸. 4X25W
44-038118-0100	RCA线夹 1.0MM G. S. S
44-058138-0100	7384 IC支架 1.0MM G. S. S, 可插入PCB板
56-173118-0004	主快巴纸, 173.5*118.6*0.4MM
59-012103-2604	机牙大盘头平尾螺丝M2.6x4BZb, 白色
59-012103-3004	机牙大盘头平尾螺丝M3x4BZb 白色
59-012103-3008	机牙大盘头平尾螺丝M3x8BZb, 白色
59-012103-2606	机牙大盘头平尾螺丝M2.6x6BZb, 白色
59-022103-3013	SCREW M3x13PMNi (+)小圆头 镀叻
59-022301-2010	自攻锁紧螺丝ST2x10PAZh, 黑色
59-012106-3004	M3*4BZb 白色 大盘头三角尾自攻加硬
71-028118-0000	防尘网 174*44*0.25T
90-3118M3-0206	PY-3118M3 主结构料 B3-2010-38D
40-013118-0001	面壳(ABS/BLACK), 表面喷银灰油(411C)再印银字“SEL/VOL, SD, RES”
40-048118-0800	装饰框 ABS-777D/Black 喷银灰油(411C)
41-013118-1001	数字1钮, 啤奶白色再喷黑光油再镭雕“>11/1”
41-023118-0001	数字2钮, 啤奶白色再喷黑光油再镭雕“INT/2”
41-033118-1001	数字3钮, 啤奶白色再喷黑光油再镭雕“RPT/3”
41-043118-0001	数字4钮, 啤奶白色再喷黑光油再镭雕“RDM/4”
41-053118-0001	数字5钮, 啤奶白色再喷黑光油再镭雕“-10/5”
41-063118-0001	数字6钮, 啤奶白色再喷黑光油再镭雕“+10/6”
41-073118-0001	前进钮, 啤奶白色再喷黑光油再镭雕
41-083118-0001	后退钮, 啤奶白色再喷黑光油再镭雕
41-093118-0001	POWER钮, 啤奶白色再喷银灰油(411C)
41-103118-0001	MOD钮, 啤奶白色再喷银灰油(411C)
41-113118-0001	SCN钮, 啤奶白色再喷银灰油(411C)再镭雕
41-123118-0001	DISP钮, 啤奶白色再喷银灰油(411C)
41-133118-0001	BND钮, 啤奶白色再喷银灰油(411C)
41-143118-0001	AMS钮, 啤奶白色再喷银灰油(411C)
41-613118-0001	音量纽, 水电镀枪色
41-663118-0001	音量纽左反光圈, 底部喷白油
41-673118-0001	音量纽右反光圈, 底部喷白油
41-683118-0104	音量纽装饰块, 镂空丝印黑色, 烫五彩字SHUTTLE
41-723118-0000	LCD 支架
47-013118-0006	镜片, 银字(877C)黑底, 丝印银字“AUX, MP3, SHUTTLE”型号:SUD-350

Mechanical Parts List

69-013118-0000	海绵A
69-023118-0000	海绵B
69-033118-0000	海绵C
69-055055-4001	遥控接收头垫 (EVA 硬度 30) 5.5*5.5*4mm
69-038118-2000	遥控头遮光EVA, 7X7X3mm, 内径 ϕ 4.5mm
90-3118M3-0302	PY-3118M3 包材 B3-2010-38D
43-088118-0110	半截柜筒 0.6mm G. S. S
44-048118-0100	钥匙 1.0mm G. S. S
44-108118-0100	长巴 0.8mm G. S. S
46-020805-0400	M5.0平面垫圈 主机固定到车内时使用
46-051309-0400	SPRING WASHER M5 垫机尾螺丝和长巴螺丝(备用)
59-012103-4005	机牙大盘头平尾螺丝M4X5BZb, 白色 ISO孔备用螺丝
59-012103-5005	机牙大盘头平尾螺丝M5X5BZc, 五彩 ISO孔备用螺丝
59-032303-5025	自攻加硬锁紧螺丝ST5X25PAZb, 白色 主机固定到车内时使用
59-065103-5003	NUT M5.0 主机固定在车内时使用
59-085403-5021	M5X21机牙双头螺杆六角螺丝
62-013118-0000	发泡胶, 210X80X50mm (1套)
62-058118-0002	主机胶袋 317x304mm
62-058118-0004	螺丝, 垫片, 钥匙胶袋 140x85mm
62-058118-0005	输出线胶袋 200*80mm
60-B10038-04-01	俄文说明书, 型号:SUD-350
62-058118-0006	说明书胶袋 225*165MM (带封口条)
63-018118-0901	10A FUSE LABEL WHTHE/BLK
63-018118-0903	1A FUSE LABEL WHTHE/BLK
63-048118-0401	CLASS I LABEL 黄底黑字
63-058118-0901	QC PASSED LABEL 白底黑字
63-068118-0601	ANT BLUE/BLK
63-078118-0201	ACC+ RED/BLK
63-088118-1001	GROUND 黑底白字
63-098118-0401	B+ YELLOW/BLK
63-108118-0701	REAR-R SPEAKER (+) (-) VIOLET/BLK
63-118118-0801	FRONT-R SPEAKER (+) (-) GRAY/BLK
63-128118-0501	REAR-L SPEAKER (+) (-) GREEN/BLK
63-138118-0901	FRONT-L SPEAKER (+) (-) WHT/BLK
63-148118-0902	LEFT RCA LABEL 白底黑字 (只一组RCA时用)
63-158118-0201	RIGHT RCA LABEL 红底黑字 (只一组RCA时用)
63-B10038-04-01	机面贴纸, 型号:SUD-350
64-B10038-01-01	保修卡
65-B10038-04-01	卡通箱(扣底用)B=B 5pcs (445X239X235mm) 型号:SUD-350
66-B10038-04-01	彩盒(扣底上开盖)225x85x215MM (250g裱B9加强过哑胶局部UV) 型号:SUD-350

FRONT BOARD





TO KB_LCD CON

