



PHONES

0 (800) 800 130
(050) 462 0 130
(063) 462 0 130
(067) 462 0 130

130
COM.UA

Internet store of
autogoods



SKYPE

km-130

CAR RECEIVERS — Receivers • Media receivers and stations • Native receivers • CD/DVD changers • FM-modulators/USB adapters • Flash memory • Facia plates and adapters • Antennas • Accessories |
 CAR AUDIO — Car audio speakers • Amplifiers • Subwoofers • Processors • Crossovers • Headphones • Accessories | TRIP COMPUTERS — Universal computers • Model computers • Accessories |
 GPS NAVIGATORS — Portable GPS • Built-in GPS • GPS modules • GPS trackers • Antennas for GPS navigators • Accessories | VIDEO — DVR • TV sets and monitors • Car TV tuners • Cameras • Videomodules
 • Transcoders • Car TV antennas • Accessories | SECURITY SYSTEMS — Car alarms • Bike alarms • Mechanical blockers • Immobilizers • Sensors • Accessories | OPTIC AND LIGHT — Xenon • Bixenon • Lamps
 • LED • Stroboscopes • Optic and Headlights • Washers • Light, rain sensors • Accessories | PARKTRONICS AND MIRRORS — Rear parktronic • Front parktronic • Combined parktronic • Rear-view mirrors
 • Accessories | HEATING AND COOLING — Seat heaters • Mirrors heaters • Screen-wipers heaters • Engine heaters • Auto-refrigerators • Air conditioning units • Accessories | TUNING — Vibro-isolation
 • Noise-isolation • Tint films • Accessories | ACCESSORIES — Radar-detectors • Handsfree, Bluetooth • Windowlifters • Compressors • Beeps, loudspeakers • Measuring instruments • Cleaners • Car seats
 • Miscellaneous | MOUNTING — Installation kits • Upholstery • Grilles • Tubes • Cable and wire • Tools • Miscellaneous | POWER — Batteries • Converters • Start-charging equipment • Capacitors
 • Accessories | MARINE AUDIO AND ELECTRONICS — Marine receivers • Marine audio speakers • Marine subwoofers • Marine amplifiers • Accessories | CAR CARE PRODUCTS — Additives • Washer fluid •
 Care accessories • Car polish • Flavors • Adhesives and sealants | LIQUID AND OIL — Motor oil • Transmission oil • Brake fluid • Antifreeze • Technical lubricant



In store "130" you can find and buy almost all necessary goods for your auto in Kyiv and other cities, delivery by ground and postal services. Our experienced consultants will provide you with exhaustive information and help you to chose the very particular thing. We are waiting for you at the address

<https://130.com.ua>

DRV-330

GPS Integrated Dashboard Camera INSTRUCTION MANUAL



Setting up the Device <Be Sure to Do This Prior to Using It>

Step 1: How to Install/How to Wire

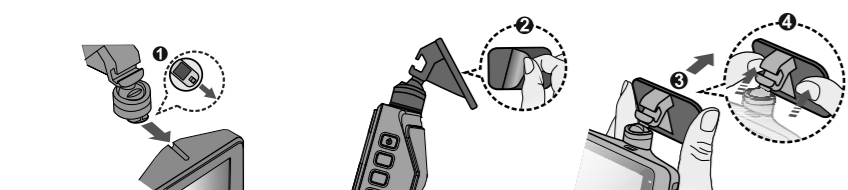
Recommended installation position

Install the device in a position where it will not block the front view of the driver (position where hidden by the rear-view mirror). Install the device so that it is within the wiping range of the wiper. Mounting the device to the center of the windshield behind the rear-view mirror will facilitate optimal video recording.

CAUTION When passing the power cord through the front pillar or another part, observe the following points when performing the wiring work. Wire the power cord farther forward or farther rearward than the airbag so that it does not interfere with the airbag.

In the case of a vehicle in which the front pillar cover is fixed in place with special clips or the like, the clips may need to be replaced after you remove the front pillar cover. For how to remove the front pillar cover, the availability of replacement parts, and other information, contact the vehicle dealer. Fix the power cord in place with commercially available soft tape or the like so that it does not interfere with driving.

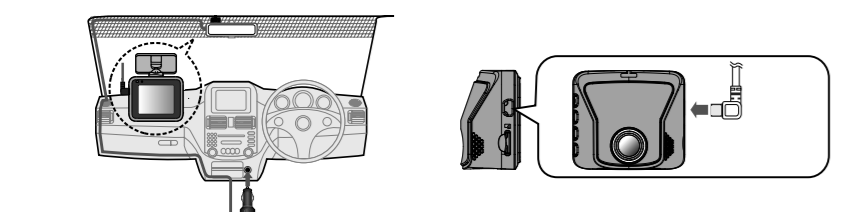
- 1 Confirm that your car is parked in a level area.
2 Use a commercially available cleaning cloth to wipe off any dirt or grease from the location you are mounting the device.
3 Follow the procedure below to mount the device securely inside the car.



Confirm the position in which to affix the device, and then affix it. To strengthen the bond of the adhesive tape, let it set for over 24 hours before use.

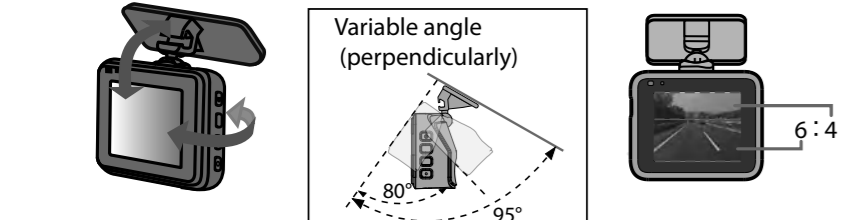
Connecting via the provided car charger

- 1 Connect the provided car charger to the car's lighter socket, connect the power cord to the device, and then arrange the cord.



- 2 Turn on the engine. The power turns on and starts charging the device. The lamp on the car charger lights green.
3 Let it charge like that for at least 3 minutes. After it has charged for over 3 minutes, you can use it.
4 Adjust the mounted angle.

When you are actually using the device, make sure that the camera's field of view is parallel to level ground and that the ground-to-sky ratio is about 6 to 4.



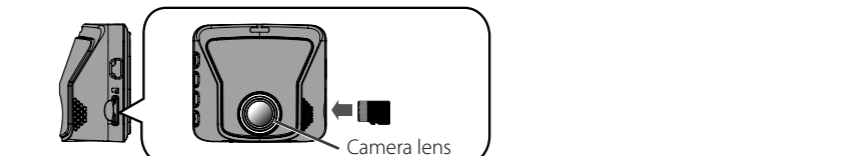
- 5 Remove the protective sheet from the camera lens.
6 Press and hold the power button until the power turns off. Once again, press and hold the power button to turn it on again.

Be sure to turn the power on again whenever you finish adjusting the angle. In addition, turn the power back on whenever you leave the power on while removing the device from the bracket or after the angle has changed and you readjust it while the power is on. The adjusted angle is recorded when the power is turned on.

If you do not use parking mode, the setup ends here for you. If you plan on using parking mode, continue to Step 3.

Just in case ...

To prevent your recorded files from being overwritten, turn the power to the device off, and then remove the memory card.



Formatting the memory card

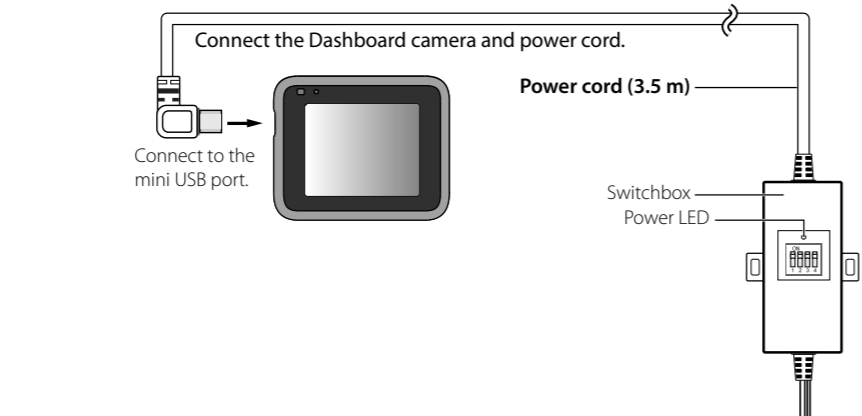
As a rule of thumb, format the memory card before you use it and about once every two weeks. We recommend that you save any necessary videos and still images to your computer.

- 1 Press the [Power] button to display the menu.
2 Press the [Up] / [Down] buttons to select "Format", and press the [Check] button.
3 Press the [Check] button.

Connecting via the CA-DR150 (optional accessory)

Before connecting the device, be sure to read and understand the instruction manual that comes with the CA-DR150 (optional accessory), and then mount it safely. Additionally, read about the switch settings and wiring beforehand.

- 1 Do the settings for the "Voltage cut-off value settings" and "Off timer settings".
2 Do the wiring.



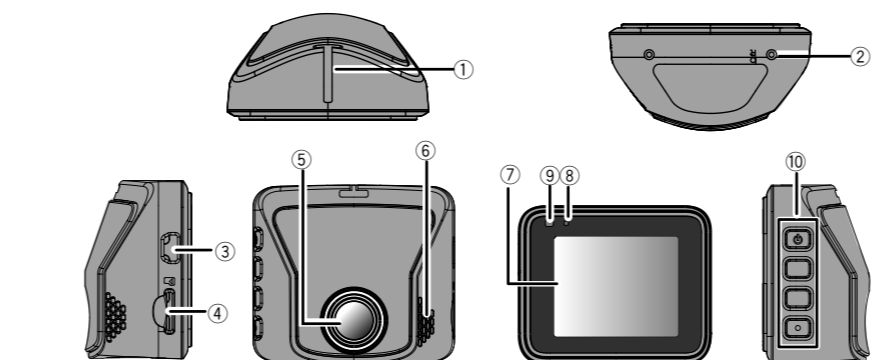
- 3 Turn the engine key to on and let the device charge like that for at least 3 minutes.
4 Adjust the mounted angle.
5 Remove the protective sheet from the camera lens.
6 Press and hold the power button until the power turns off. Once again, press and hold the power button to turn it on again.

Step 2: Inserting and Formatting a Memory Card

- 1 Press and hold the power button until the power turns off.
2 Confirm that the power is off, and then insert your memory card into the device.
3 Press and hold the [Power] button until the power turns on.
4 Format the memory card.

Names and Functions of Parts

The following explains how to do the device's basic operations and settings.

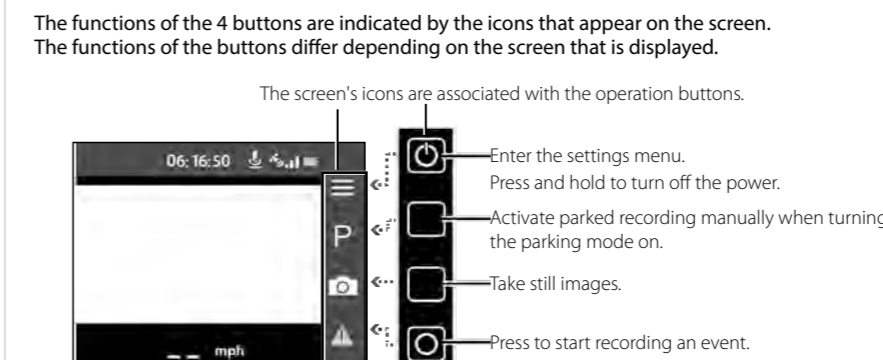


- 1 Insertion slot for the mounting bracket
2 Reset button Resets the device.
3 Mini USB port (DC5V)
4 microSD card slot Insert an SD card for recording.
5 Camera lens
6 Speaker
7 LCD display
8 Microphone Records audio.

Indicator LED

Table with 3 columns: Status, Charge, Recording status. Rows describe LED colors and their meanings: Lit green (Charging, Not recording), Flashing green and orange alternately (Charging, Recording), Lit red (Monitoring parking mode), Flashing red (Recording).

Operation buttons



Recording Modes

Function 1: Continuous recording

Always records video while you are driving. Includes a timeline diagram showing continuous recording and a list of features: recording data saved to 'Photo' folder, automatic overwriting, and setting recording time.

Function 2: Event recording

Records when it detects an impact while you are driving. Includes a timeline diagram showing event recording triggered by an impact and a list of features: recording data saved to 'Event' folder and automatic overwriting.

Function 3: Parking recording

Records when it detects impacts or movements while you are parked, as well. Includes a timeline diagram showing parked recording starting after 25 minutes and a list of features: recording data saved to 'Parking' folder and automatic overwriting.

- Use the separately-sold CA-DR150 on-board power cable for dashboard cameras and turn parking mode on.
Do continuous recording while parked, set the [Auto Entry] settings to [Manual]. While overwriting older files without switching to parking mode, the device continues recording to the "Video" folder until it reaches the off timer settings value.

The Device's Screens and Operations

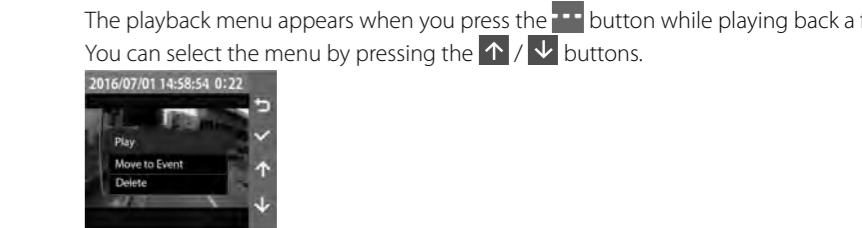
Table with 3 columns: Name of the screen, Screen, Button explanations. Rows describe Continuous recording, Event recording, Parking mode While motion detection is engaged, and Parking mode Impacts.

Function 4: Still image recording

Takes a still image of the displayed video. Includes a diagram of the still image recording process and a list of features: recording data saved to 'Photo' folder, automatic overwriting, and still image files are automatically overwritten.

Playing a Recording File

- 1 Press the [Power] button to display the menu.
2 Press the [Up] / [Down] buttons to select "File Playback", and press the [Check] button.
3 Press the [Up] / [Down] buttons to select a folder that you want to play back, and then press the [Check] button.
4 Press the [Left] / [Right] buttons to select a file that you want to play back, and then press the [Check] button.



- Play/Pause: Press the [Check] button to play back a file you are viewing.
Move to Event: Press the [Check] button to move a file you are viewing to the "Event" folder.
Delete: "Are you sure you want to delete it?" appears when you press the [Check] button. If you press it again, the file you are viewing is deleted.

Using the PC Application

KENWOOD ROUTE WATCHER II is a PC application for displaying video recorded with the device.

System Requirements for KENWOOD ROUTE WATCHER II

- OS: Microsoft Windows 10, Windows 8.1, Windows 7*
* (except for the Windows 10 Mobile, Windows RT)
* Windows 7 Service Pack 1 must be installed.
OS: Apple Mac OS X 10.11 (El Capitan) or later
Microsoft, and Windows are registered trademark or trademark of Microsoft Corporation in the US and other countries.
Macintosh, Mac are trademarks of Apple Inc., registered in the U.S. and other countries.

Installing the Software

- 1 Download the installer from http://www.kenwood.com/cs/ce/.
2 Install according to the on-screen instructions.

