



PHONES

0 (800) 800 130
(050) 462 0 130
(063) 462 0 130
(067) 462 0 130

130
COM.UA

Internet store of
autogoods



SKYPE

km-130

CAR RECEIVERS — Receivers • Media receivers and stations • Native receivers • CD/DVD changers • FM-modulators/USB adapters • Flash memory • Facia plates and adapters • Antennas • Accessories |
CAR AUDIO — Car audio speakers • Amplifiers • Subwoofers • Processors • Crossovers • Headphones • Accessories | TRIP COMPUTERS — Universal computers • Model computers • Accessories |
GPS NAVIGATORS — Portable GPS • Built-in GPS • GPS modules • GPS trackers • Antennas for GPS navigators • Accessories | VIDEO — DVR • TV sets and monitors • Car TV tuners • Cameras • Videomodules
• Transcoders • Car TV antennas • Accessories | SECURITY SYSTEMS — Car alarms • Bike alarms • Mechanical blockers • Immobilizers • Sensors • Accessories | OPTIC AND LIGHT — Xenon • Bixenon • Lamps
• LED • Stroboscopes • Optic and Headlights • Washers • Light, rain sensors • Accessories | PARKTRONICS AND MIRRORS — Rear parktronic • Front parktronic • Combined parktronic • Rear-view mirrors
• Accessories | HEATING AND COOLING — Seat heaters • Mirrors heaters • Screen-wipers heaters • Engine heaters • Auto-refrigerators • Air conditioning units • Accessories | TUNING — Vibro-isolation
• Noise-isolation • Tint films • Accessories | ACCESSORIES — Radar-detectors • Handsfree, Bluetooth • Windowlifters • Compressors • Beeps, loudspeakers • Measuring instruments • Cleaners • Car seats
• Miscellaneous | MOUNTING — Installation kits • Upholstery • Grilles • Tubes • Cable and wire • Tools • Miscellaneous | POWER — Batteries • Converters • Start-charging equipment • Capacitors
• Accessories | MARINE AUDIO AND ELECTRONICS — Marine receivers • Marine audio speakers • Marine subwoofers • Marine amplifiers • Accessories | CAR CARE PRODUCTS — Additives • Washer fluid •
Care accessories • Car polish • Flavors • Adhesives and sealants | LIQUID AND OIL — Motor oil • Transmission oil • Brake fluid • Antifreeze • Technical lubricant

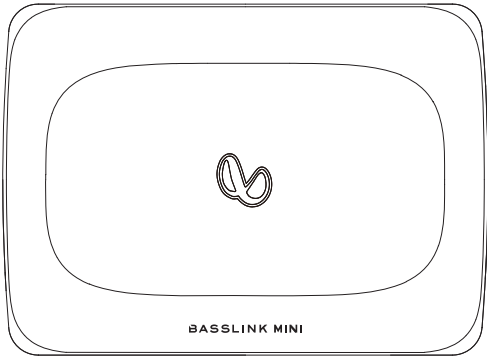


In store "130" you can find and buy almost all necessary goods for your auto in Kyiv and other cities, delivery by ground and postal services. Our experienced consultants will provide you with exhaustive information and help you to choose the very particular thing. We are waiting for you at the address

<https://130.com.ua>

Owner's Manual

EN

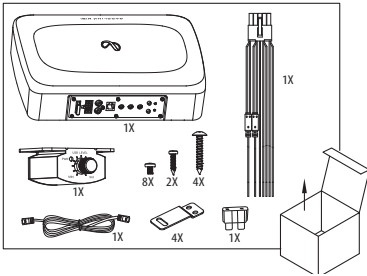


130.com.ua

ABOUT THE MANUAL

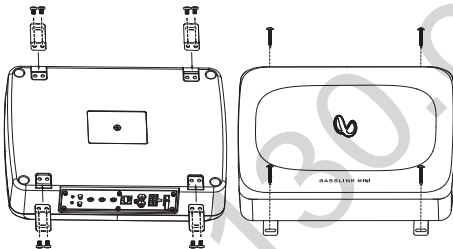
This manual displays general Owner's Manual guideline. However, please note that proper installation of mobile audio components requires qualified experience. If you do not have the knowledge and tools to successfully perform this installation, we strongly recommend consulting an authorized Infinity dealer about your installation options. Keep all instructions and sales receipts for reference.

WHAT'S IN THE BOX



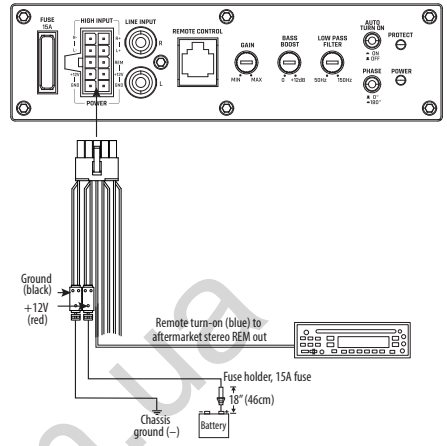
MOUNTING THE BASSLINK MINI

Recommended location: under the passenger seat



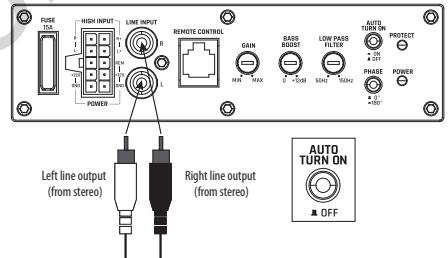
NOTE: Before securing the BassLink MINI with mounting screws, check beneath the mounting surface to ensure you will not puncture fuel lines, brake lines, or any vehicle wires. Also ensure that the BassLink MINI will not interfere with seat operation or wiring, or block underseat heater/air conditioning vents.

WIRING FOR POWER AND GROUND



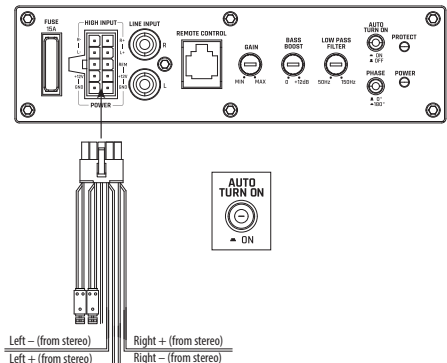
WIRING FOR AUDIO SIGNAL

Line-level from aftermarket stereo



NOTE: When connecting an aftermarket stereo to the Infinity BassLink MINI's line-level inputs and remote turn-on wire, set the AUTO TURN ON button to OFF.

Speaker-level from factory or aftermarket stereo



Harness high-level input wire guide	
White/White with black stripe	Left + / Left -
Gray/Gray with black stripe	Right + / Right -

NOTE: When connecting a factory or aftermarket stereo to the BassLink MINI's speaker-level inputs, set the **AUTO TURN ON** button to **ON**.

SETTING GAIN, ADJUSTING PHASE, LOW-PASS FILTER, AND BASS BOOST

1. Start with **GAIN** control set to minimum, and the crossover control rotated midway.
2. Choose music with substantial bass content and turn the volume control on your receiver to $\frac{3}{4}$ of its total output.
3. Adjust the **GAIN** control clockwise, listening carefully to the bass output. If you hear distortion, turn the **GAIN** control counterclockwise to decrease the **GAIN**.

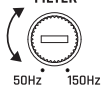


PHASE



4. Switch the **PHASE** back and forth to determine which setting provides the most clean bass output.

LOW PASS FILTER



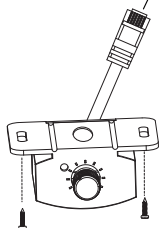
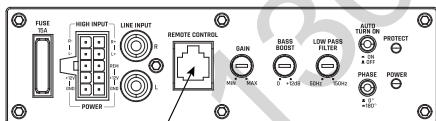
5. Adjust the **LOW-PASS FILTER** control until the BassLink MINI plays only low-frequency information – you should not hear elements such as vocals coming from the woofer.

BASS BOOST



6. Adjust the **BASS-BOOST** control clockwise or counterclockwise to suit your taste.

CONNECTING THE REMOTE BASS CONTROL MODULE



SPECIFICATIONS

- Driver Complement: 6" x 8" (152mm x 203mm) woofer
- Amplifier Power Output: 100WRMS, 200W Max
- Frequency Response: 30 Hz – 150 Hz
- Fuse: 15A
- Maximum Current Draw: 13A
- Quiescent Current Draw: <600 mA
- Input Sensitivity: 0.1 V – 4.0 V low-level input; 0.25 V – 10V high-level input
- Crossover Frequency: 50 Hz – 150 Hz
- Crossover Slope: 12 dB/octave
- Bass Boost: 0 dB to +12 dB @ 50Hz
- Dimensions: 11-7/16" x 8-5/16" x 3" (289.6mm x 209.6mm x 75mm)
- Weight: 8.22lbs. (3.73kg)

TROUBLESHOOTING

No audio and POWER indicator is off:

- No voltage at **BATT+** and/or **REM** terminals, or bad or no ground connection. Check voltages at amplifier terminals with **VOM**.

No audio and PROTECT indicator flashes every 4 seconds:

- DC voltage on amplifier output. Amplifier may need service; see enclosed warranty card for service information.

No audio and PROTECT and POWER indicators flash:

- Voltage less than 9V on **BATT+** connection. Check vehicle charging system.

No audio and PROTECT indicator is on.

- Amplifier is overheated. Make sure amplifier cooling is not blocked at mounting location. Or, there may be voltage greater than 16V (or less than 8.5V) on **BATT+** connection. Check vehicle charging system.

Amplifier fuse keeps blowing.

- The wiring is connected incorrectly or there is a short circuit. Check wiring connections.

Distorted audio.

- **GAIN** is not set properly. Check setting. Check wires for shorts or grounds. Amplifier or source unit may be defective.

Music lacks dynamics or "punch."

- If using speaker-level inputs, check connections for proper polarity. Switch **PHASE** back and forth between 0° and 180° and leave on setting with best sound.

Engine noise—whining or clicking—in system when the engine is on.

- Amplifier is picking up alternator noise. First, check ground connection on the amplifier – a loose or improper ground is one of the main causes for noise. Turn down **GAIN**. Move RCA audio cables away from power wires. Installing an alternator noise filter on power line between battery and alternator might also be necessary.



HARMAN International Industries,
Incorporated 8500 Balboa Boulevard,
Northridge, CA 91329 USA
www.infinityspeakers.com

© 2019 HARMAN International Industries, Incorporated. All rights reserved. Infinity is a trademark of HARMAN International Industries, Incorporated, registered in the United States and/or other countries. Features, specifications and appearance are subject to change without notice.