



PHONES

(044) 338-0-130
 (050) 332-0-130
 (063) 577-0-130
 (067) 353-0-130

130
 COM.UA

Internet store of
 autogoods



SKYPE
 km-130

CAR RECEIVERS — Receivers • Media receivers and stations • Native receivers • CD/DVD changers • FM-modulators/USB adapters • Flash memory • Facia plates and adapters • Antennas • Accessories |
 CAR AUDIO — Car audio speakers • Amplifiers • Subwoofers • Processors • Crossovers • Headphones • Accessories | TRIP COMPUTERS — Universal computers • Model computers • Accessories |
 GPS NAVIGATORS — Portable GPS • Built-in GPS • GPS modules • GPS trackers • Antennas for GPS navigators • Accessories | VIDEO — DVR • TV sets and monitors • Car TV tuners • Cameras • Videomodules • Transcoders • Car TV antennas • Accessories | SECURITY SYSTEMS — Car alarms • Bike alarms • Mechanical blockers • Immobilizers • Sensors • Accessories | OPTIC AND LIGHT — Xenon • Bixenon • Lamps • LED • Stroboscopes • Optic and Headlights • Washers • Light, rain sensors • Accessories | PARKTRONICS AND MIRRORS — Rear parktronic • Front parktronic • Combined parktronic • Rear-view mirrors • Accessories | HEATING AND COOLING — Seat heaters • Mirrors heaters • Screen-wipers heaters • Engine heaters • Auto-refrigerators • Air conditioning units • Accessories | TUNING — Vibro-isolation • Noise-isolation • Tint films • Accessories | ACCESSORIES — Radar-detectors • Handsfree, Bluetooth • Windowlifters • Compressors • Beeps, loudspeakers • Measuring instruments • Cleaners • Carsits • Miscellaneous | MOUNTING — Installation kits • Upholstery • Grilles • Tubes • Cable and wire • Tools • Miscellaneous | POWER — Batteries • Converters • Start-charging equipment • Capacitors • Accessories | MARINE AUDIO AND ELECTRONICS — Marine receivers • Marine audio speakers • Marine subwoofers • Marine amplifiers • Accessories | CAR CARE PRODUCTS — Additives • Washer fluid • Care accessories • Car polish • Flavors • Adhesives and sealants | LIQUID AND OIL — Motor oil • Transmission oil • Brake fluid • Antifreeze • Technical lubricant



In store "130" you can find and buy almost all necessary goods for your auto in Kyiv and other cities, delivery by ground and postal services. Our experienced consultants will provide you with exhaustive information and help you to chose the very particular thing. We are waiting for you at the address

<http://130.com.ua>

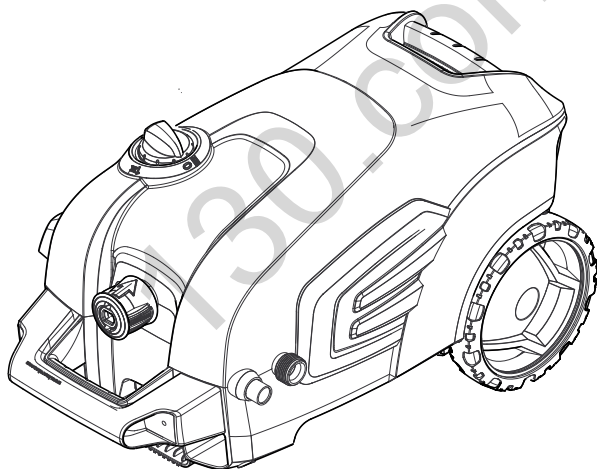
KÄRCHER

makes a difference

K 4 Compact

English

10

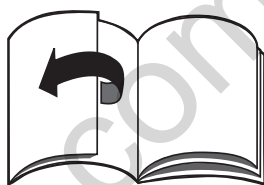


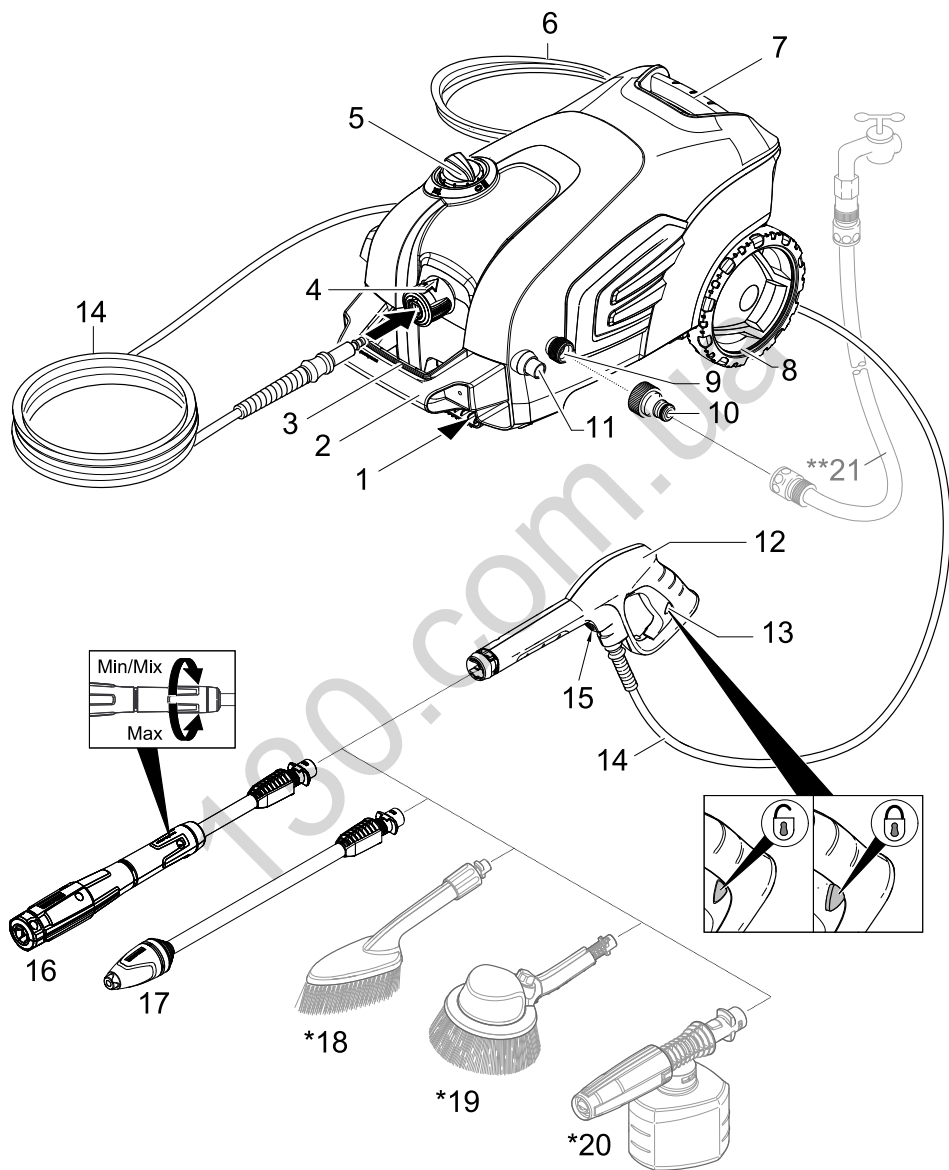
EAC

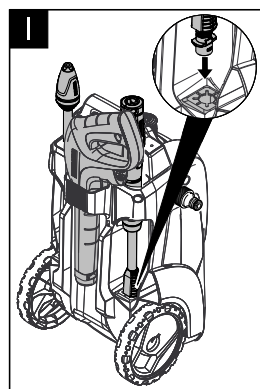
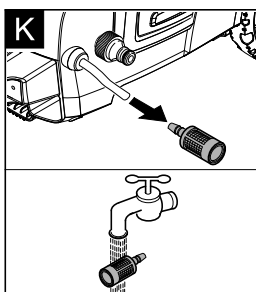
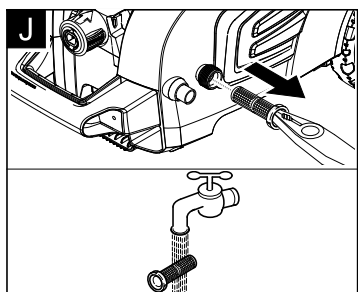
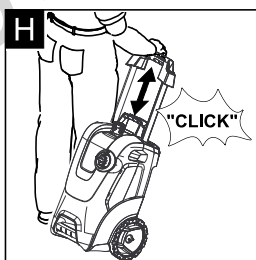
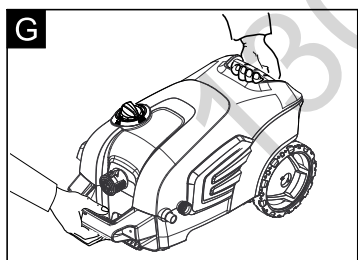
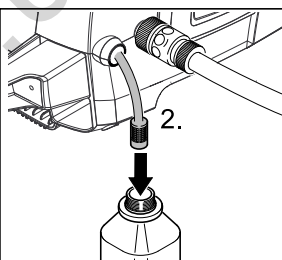
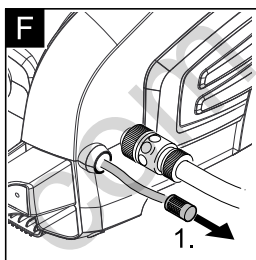
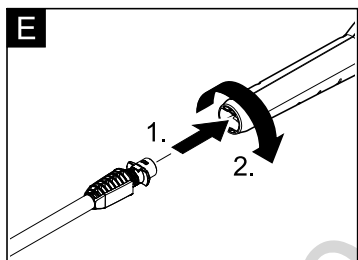
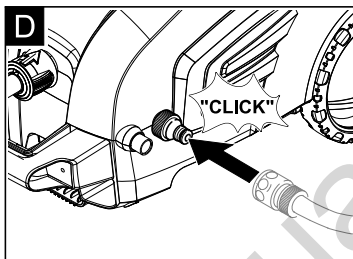
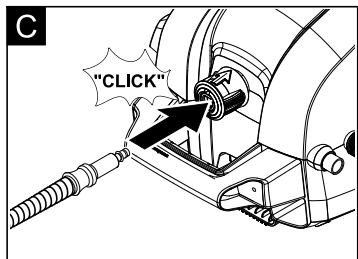
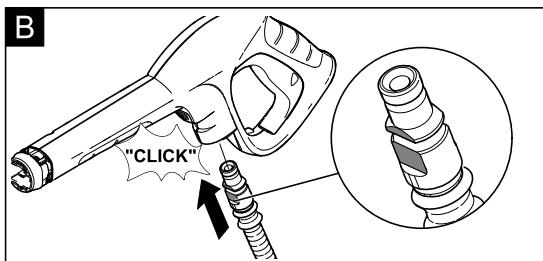
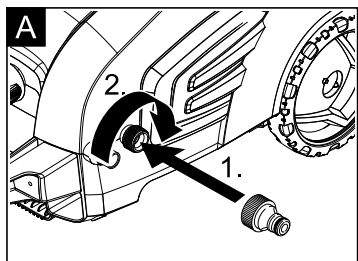
Autogoods "130"



59672590 (11/16)







Contents

Safety	EN	5
Environmental protection	EN	5
Description of the Appliance	EN	6
Assembly	EN	6
Start up	EN	6
Operation	EN	7
Transport	EN	7
Storage	EN	8
Care and maintenance	EN	8
Spare parts	EN	8
Troubleshooting	EN	8
Warranty	EN	9
Technical specifications	EN	9
EU Declaration of Conformity	EN	9

Safety



Please read and comply with these original operating instructions and the enclosed safety instructions. Proceed accordingly. Keep both booklets for future reference or subsequent owners.

Proper use

This high pressure cleaner is designed for domestic use only.

- for cleaning machines, vehicles, buildings, tools, facades, terraces, gardening tools, etc. by means of a high-pressure water jet (if necessary, with additional cleaning agents).
- with accessories, replacement parts and cleaning agents approved by KÄRCHER. Please observe the information accompanying the cleaning agents.

Hazard levels

⚠ **DANGER**

Pointer to immediate danger, which leads to severe injuries or death.

⚠ **WARNING**

Pointer to a possibly dangerous situation, which can lead to severe injuries or death.

⚠ **CAUTION**

Pointer to a possibly dangerous situation, which can lead to minor injuries.

ATTENTION

Pointer to a possibly dangerous situation, which can lead to property damage.

Symbols on the machine



The appliance must not be directly connected to the public drinking water network.



1 The appliance must only be operated laying down (horizontal).

2 The high pressure jet must not be directed at persons, animals, live electrical equipment or at the appliance itself.

3 Protect the appliance against frost.

Safety Devices

⚠ **CAUTION**

- Safety installations serve the protection of the user and may not be modified or bypassed.

Appliance switch

The appliance switch prevents unintentional operation of the appliance.

Lock trigger gun

This lock locks the lever of the trigger gun and prevents the inadvertent start of the appliance.

Overflow valve with pressure switch

The overflow valve prevents the permissible working pressure from being exceeded.

If the lever on the trigger gun is released the pressure switch turns off the pump, the high pressure jet is stopped. If the lever is pulled the pump is turned on again.

Motor protection switch

The motor protection switch switches off the device if the power consumption is high.

Environmental protection

Notes about the ingredients (REACH)

You will find current information about the ingredients at:

www.kaercher.com/REACH



The packaging material can be recycled. Please arrange for the environmentally appropriate disposal of the packaging.



Electrical and electronic devices often contain components which could potentially pose a danger to human health and the environment if handled or disposed of incorrectly. However, these components are necessary for the proper operation of the device. Devices marked with this symbol must not be disposed of with regular household rubbish.

Old appliances contain valuable recyclable materials that should be recycled properly. Batteries and accumulators contain substances that must not enter the environment. Please dispose of old devices and batteries or accumulators in an environmentally friendly way.



Cleaning operations which produce oily waste water, e.g. engine washes, underbody washes, may only be carried out using washing stations equipped with an oil separator.



Work with detergents must only be performed on liquid-tight work surfaces with a connection to the sewer system. Do not let release detergent into waters or earth.



The extraction of water from public waters is prohibited in some countries.

Description of the Appliance

These operating instructions describe the maximum equipment. Depending on the model, there are differences in the scopes of delivery (see packaging).

See fold-out page 3 for illustrations

- 1 Storage for accessories
- 2 Transport handle, detachable
- 3 Carrying handle
- 4 Quick coupling for high pressure hose
- 5 Appliance switch „0/OFF“ / „I/ON“
- 6 Mains cable with mains plug
- 7 Carrying handle
- 8 Bearing wheel
- 9 Water connection with integrated sieve
- 10 Coupling element for water connection
- 11 Detergent suction hose (with sieve)
- 12 Trigger gun
- 13 Lock trigger gun
- 14 High pressure hose
- 15 Key to detach the high pressure hose from the trigger gun
- 16 Spray lance with pressure regulation (Vario Power)
Carrying out the most common cleaning tasks. The work pressure can be stagelessly regulated between "Min" and "Max". You can add detergent when "Mix" is selected.
In order to adjust the working pressure, release the lever of the trigger gun and turn the spray lance to the desired position.
- 17 Spray lance with Dirtblaster
For strong contaminations

* Optional accessories

- 18 Washing brush
Suitable for use with detergents.
- 19 Rotary washing brush
Especially suitable for cleaning cars.
- 20 Foam nozzle with detergent container
With powerful foam for effortless cleaning.

** Additionally required

- 21 Fabric-reinforced water hose with commercially available coupling.
 - Minimum diameter, 1/2 inches (13 mm).
 - Minimum length 7.5 m.

Assembly

Mount loose parts delivered with appliance prior to start-up.

See fold-out page 4 for illustrations

- ➔ Illustration **A**
Screw the coupling element to the water connection on the appliance.
- ➔ Illustration **B**
Push the high pressure hose into the trigger gun until it locks audibly.
Note: Make sure the connection nipple is aligned correctly.
- ➔ Check the secure connection by pulling on the high pressure hose.

Start up

- ➔ Park the appliance laying down (horizontal) on an even surface.
- ➔ Illustration **C**
Push the high pressure hose into the quick coupling until it locks audibly.
- ➔ Insert the mains plug into the socket.

Water supply

For connection values, see type plate/technical data.

ATTENTION

Impurities in the water can damage the high-pressure pump and the accessories. For protection, the use of the KÄRCHER water filter (optional accessory, order no. 4.730-059) is recommended.

Water supply from mains

Observe regulations of water supplier.

ATTENTION

Hose couplings made of metal with aquastop can damage the pump! Please use plastic couplings or KÄRCHER brass couplings.

- ➔ Illustration **D**
Attach the water supply hose to the coupling on the water connection.
- ➔ Connect the water supply hose to the water supply.
- ➔ Completely open the water tap.

Drawing in water from open reservoirs

This high-pressure cleaner is suited to work with the KÄRCHER suction hose with backflow valve (Optional accessory, order no. 4.440-238) to draw in surface water, e.g. from water butts or ponds (see specifications for max. suction height).

- ➔ Remove coupling from the water connection.
- ➔ Fill the suction hose with water.
- ➔ Screw the suction hose into the water connection of the appliance and insert it into the water source (e.g. rainwater drum).

Remove air from appliance before operation.

- ➔ Turn on the appliance "I/ON".
- ➔ Unlock the lever on the trigger gun.
- ➔ Pull on the lever of the trigger gun; the device will switch on.
- ➔ Let the appliance work until the water exits at the hand spray gun without bubbles (max. 2 minutes).
- ➔ Release the lever on the trigger gun.
Note: Release the lever of the trigger gun; the device will switch off again. High pressure remains in the system.
- ➔ Lock the lever on the trigger gun.

Operation

ATTENTION

Dry running of more than 2 minutes leads to damage of the high-pressure pump. If the appliance does not build up pressure within 2 minutes, switch the appliance off and proceed in accordance with the instructions in Chapter "Troubleshooting".

ATTENTION

Risk of damage! The appliance must only be operated laying down (horizontal).

High pressure operation

⚠ CAUTION

Keep a distance of at least 30 cm when using the jet for cleaning painted surfaces to avoid damage.

ATTENTION

Car tyres, paint or sensitive surfaces such as wood should not be cleaned with the dirt blaster, as there is a risk of damage.

➔ Illustration **E**

Push the spray lance into the trigger gun and fasten it by turning it through 90°.

➔ Turn on the appliance "I/ON".

➔ Unlock the lever on the trigger gun.

➔ Pull on the lever of the trigger gun; the device will switch on.

Note: Release the lever of the trigger gun; the device will switch off again. High pressure remains in the system.

Operation with washing brush

ATTENTION

Risk of damage to the paintwork

When working with the washing brush, it must be free of dirt or other particles.

➔ Push the washing brush into the trigger gun and fasten it by a 90° turn.

Note: If required, the washing brushes can be used to work with detergent.

Operation with detergent

Note: Detergent can only be added when the device is operated in low pressure mode.

⚠ DANGER

When using detergents, the material data safety sheet issued by the detergent manufacturer must be adhered to, especially the instructions regarding personal protective equipment.

➔ Illustration **F**

Pull detergent suction hose as far as is required out of the housing.

➔ Suspend end of detergent suction hose in a container filled with detergent.

➔ Use spray lance with pressure regulation (Vario Power).

➔ Turn the spray lance to "Mix" position.

Note: This will mix the detergent with the water stream.

Recommended cleaning method

➔ Spray the detergent sparingly on the dry surface and allow it to react, but not to dry.

➔ Spray off loosened dirt with the high pressure jet.

Optional

Foam nozzle

➔ Fill the detergent solution in the detergent tank of the foam nozzle (observe dosage instructions on the packaging of the detergent).

➔ Connect the detergent tank to the foam nozzle.

➔ Connect the foam nozzle to the trigger gun.

Interrupting operation

➔ Release the lever on the trigger gun.

➔ Lock the lever on the trigger gun.

➔ During longer breaks (more than 5 minutes), also turn the appliance off using the "0/OFF" switch.

Finish operation

⚠ CAUTION

Only separate the high-pressure hose from the hand spray gun or the appliance when there is no pressure in the system.

➔ After operation with detergent: Run the machine for approximately 1 minute for a clear rinse.

➔ Release the lever on the trigger gun.

➔ Turn off the appliance "0/OFF".

➔ Disconnect the mains plug from the socket.

➔ Turn off tap.

➔ Press the lever on the trigger gun to release any remaining pressure in the system.

➔ Lock the lever on the trigger gun.

⚠ CAUTION

When disconnecting the supply or high pressure hose, hot water may leak from the connections after operation.

➔ Detach the appliance from the water supply.

Transport

⚠ CAUTION

Risk of personal injury or damage!

Mind the weight of the appliance during transport.

When transporting by hand

➔ Illustration **G**

Life appliance by the carrying handles and carry it.

➔ Illustration **H**

Pull out the transport handle until it audibly snaps into place.

Pull the appliance by its transport handle.

When transporting in vehicles

➔ Secure the appliance against shifting and tipping over.

Storage

⚠ CAUTION

Risk of personal injury or damage!

Consider the weight of the appliance when storing it.

Storing the Appliance

- ➔ Park the machine on an even surface.
- ➔ Press the disconnect on the trigger gun and remove the high pressure hose from the trigger gun.
- ➔ Push the casing of the quick coupling for the high pressure hose toward the rear and disconnect the high pressure hose from the appliance.
- ➔ Illustration **I**
Insert the trigger gun in its holder.
Engage the spray lance in its compartment.
- ➔ Stow away the mains cable and the high-pressure hose on the appliance.

Frost protection

ATTENTION

Appliances and accessories that are not completely drained can be destroyed by frost. Completely drain appliance and accessories and protect them against frost.

To avoid damage:

- ➔ Completely drain all water from the appliance:
Switch the appliance on with detached high pressure hose and detached water supply (max. 1 minute) and wait, until no more water exits at the high pressure connection. Turn off the appliance.
- ➔ Store the appliance and the entire accessories in a frost free room.

Prior to extended storage periods, as during the winter, also observe the instructions in the Care section.

Care and maintenance

⚠ DANGER

Risk of electric shock.

- ➔ *Prior to all work on the appliance, switch off the appliance and pull the power plug.*

Clean the sieve in the water connection

ATTENTION

The sieve must not be damaged.

- ➔ Remove coupling from the water connection.
- Illustration **J**
- ➔ Pull the sieve out using flat pliers.
- ➔ Clean the sieve under running water.
- ➔ Reinsert the sieve into the water connection.

Cleaning the detergent filter

- ➔ Illustration **K**
Remove filter from suction hose for detergent and clean under running water.

Spare parts

Use only original KÄRCHER spare parts. You will find a list of spare parts at the end of these operating instructions.

Troubleshooting

You can rectify minor faults yourself with the help of the following overview.

If in doubt, please consult the authorized customer service.

⚠ DANGER

Risk of electric shock.

- ➔ *Prior to all work on the appliance, switch off the appliance and pull the power plug.*

Appliance is not running

- ➔ Pull on the lever of the trigger gun; the device will switch on.
- ➔ Check whether the voltage indicated on the type plate corresponds to the voltage of the mains supply.
- ➔ Check the mains connection cable for damages.
- ➔ Motor overloaded, the motor circuit breaker has tripped.
 - Turn off the appliance "0/OFF".
 - Allow the device to cool down for **one hour**.
 - Switch on the device and put it into operation again.
- If the malfunction occurs repeatedly, have the device checked by the customer service.

Appliance does not start, motor hums

Voltage reduction due to weak mains supply or when using an extension cable.

- ➔ When switching on, first pull the lever of the trigger gun and then switch the appliance switch to "I/ON".

Pressure does not build up in the appliance

- ➔ Check water supply for adequate delivery rate.
- ➔ Pull out the sieve in the water connection using flat-nose pliers and clean under running water.
- ➔ Appliance ventilation: Switch the appliance on with the high-pressure hose detached and operate (max. 2 minutes) until the water exits the high-pressure connection without bubbles. Switch off appliance and reconnect high-pressure hose.
- ➔ Suction height of 0.5 m when vacuuming from open container has been exceeded.

Strong pressure fluctuations

- ➔ Clean high-pressure nozzle: Remove dirt and debris from the nozzle bore, using a needle and rinse through with water from the front.
- ➔ Check water flow quantity.

Appliance is leaking

- ➔ Slight leakage from the appliance pump is normal. If the leakage increases contact the authorized customer service.

No detergent infeed

- ➔ Use spray lance with pressure regulation (Vario Power).
Turn the spray lance to "Mix" position.
- ➔ Clean the detergent suction hose filter.
- ➔ Check the detergent suction hose for kinks.

Warranty

The warranty terms published by the relevant sales company are applicable in each country. We will repair potential failures of your appliance within the warranty period free of charge, provided that such failure is caused by faulty material or defects in manufacturing. In the event of a warranty claim please contact your dealer or the nearest authorized Customer Service centre. Please submit the proof of purchase. Addresses can be found under:

www.kaercher.com/dealersearch

Technical specifications

Electrical connection

Voltage	230 V 1~50 Hz
---------	------------------

Connected load	1,8 kW
----------------	--------

Protection class	IP X5
------------------	-------

Protective class	I
------------------	---

Mains fuse (slow-blow)	10 A
------------------------	------

Water connection

Max. feed pressure	0,8 MPa
--------------------	---------

Max. feed temperature	40 °C
-----------------------	-------

Min. feed volume	9 l/min
------------------	---------

Max. Suction height	0,5 m
---------------------	-------

Performance data

Working pressure	11 MPa
------------------	--------

Max. permissible pressure	13 MPa
---------------------------	--------

Water flow rate	6,3 l/min
-----------------	-----------

Max. flow rate	7,0 l/min
----------------	-----------

Detergent flow rate	0,3 l/min
---------------------	-----------

Recoil force of trigger gun	13 N
-----------------------------	------

Dimensions and weights

Length	516 mm
--------	--------

Width	295 mm
-------	--------

Height	282 mm
--------	--------

Weight, ready to operate with accessories	12,2 kg
---	---------

Values determined as per EN 60335-2-79

Hand-arm vibration value	<2,5 m/s ²
Uncertainty K	0,3 m/s ²

Sound pressure level L _{pA}	75 dB(A)
Uncertainty K _{pA}	3 dB(A)

Sound power level L _{WA} + Uncertainty K _{WA}	91 dB(A)
---	----------

Subject to technical changes.

EU Declaration of Conformity

We hereby declare that the machine described below complies with the relevant basic safety and health requirements of the EU Directives, both in its basic design and construction as well as in the version put into circulation by us. This declaration shall cease to be valid if the machine is modified without our prior approval.

Product: High pressure cleaner

Type: 1.637-xxx

Relevant EU Directives

2000/14/EC

2014/30/EU

2006/42/EC (+2009/127/EC)

2011/65/EU

Applied harmonized standards

EN 50581

EN 55014-1: 2006+A1: 2009+A2: 2011

EN 55014-2: 2015

EN 60335-1

EN 60335-2-79

EN 61000-3-2: 2006+A1: 2009+A2: 2009

EN 61000-3-3: 2013

EN 62233: 2008

Applied conformity evaluation method

2000/14/EC: Appendix V


Sound power level dB(A)

Measured: 87

Guaranteed: 91

The undersigned act on behalf and under the power of attorney of the company management.


H. Jenner
CEO


S. Reiser
Head of Approbation

Authorised Documentation Representative
S. Reiser

Alfred Kärcher GmbH Co. KG
Alfred-Kärcher-Str. 28 - 40
71364 Winnenden (Germany)
Phone: +49 7195 14-0
Fax: +49 7195 14-2212

Winnenden, 2016/04/01

130.com.ua



<http://www.kaercher.com/dealersearch>

