



PHONES

(044) 338-0-130
 (050) 332-0-130
 (063) 577-0-130
 (067) 353-0-130

130
 COM.UA

Internet store of
 autogoods



SKYPE
 km-130

CAR RECEIVERS — Receivers • Media receivers and stations • Native receivers • CD/DVD changers • FM-modulators/USB adapters • Flash memory • Facia plates and adapters • Antennas • Accessories |
 CAR AUDIO — Car audio speakers • Amplifiers • Subwoofers • Processors • Crossovers • Headphones • Accessories | TRIP COMPUTERS — Universal computers • Model computers • Accessories |
 GPS NAVIGATORS — Portable GPS • Built-in GPS • GPS modules • GPS trackers • Antennas for GPS navigators • Accessories | VIDEO — DVR • TV sets and monitors • Car TV tuners • Cameras • Videomodules
 • Transcoders • Car TV antennas • Accessories | SECURITY SYSTEMS — Car alarms • Bike alarms • Mechanical blockers • Immobilizers • Sensors • Accessories | OPTIC AND LIGHT — Xenon • Bixenon • Lamps
 • LED • Stroboscopes • Optic and Headlights • Washers • Light, rain sensors • Accessories | PARKTRONICS AND MIRRORS — Rear parktronic • Front parktronic • Combined parktronic • Rear-view mirrors
 • Accessories | HEATING AND COOLING — Seat heaters • Mirrors heaters • Screen-wipers heaters • Engine heaters • Auto-refrigerators • Air conditioning units • Accessories | TUNING — Vibro-isolation
 • Noise-isolation • Tint films • Accessories | ACCESSORIES — Radar-detectors • Handsfree, Bluetooth • Windowlifters • Compressors • Beeps, loudspeakers • Measuring instruments • Cleaners • Carsits
 • Miscellaneous | MOUNTING — Installation kits • Upholstery • Grilles • Tubes • Cable and wire • Tools • Miscellaneous | POWER — Batteries • Converters • Start-charging equipment • Capacitors
 • Accessories | MARINE AUDIO AND ELECTRONICS — Marine receivers • Marine audio speakers • Marine subwoofers • Marine amplifiers • Accessories | CAR CARE PRODUCTS — Additives • Washer fluid •
 Care accessories • Car polish • Flavors • Adhesives and sealants | LIQUID AND OIL — Motor oil • Transmission oil • Brake fluid • Antifreeze • Technical lubricant



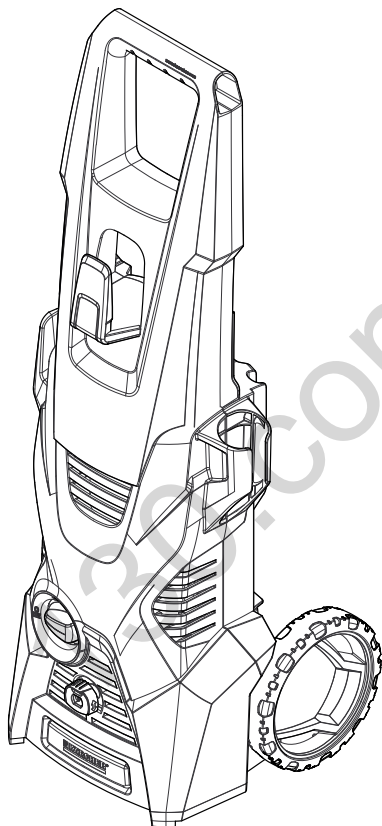
In store "130" you can find and buy almost all necessary goods for your auto in Kyiv and other cities, delivery by ground and postal services. Our experienced consultants will provide you with exhaustive information and help you to chose the very particular thing. We are waiting for you at the address

<http://130.com.ua>

K 3

English

10

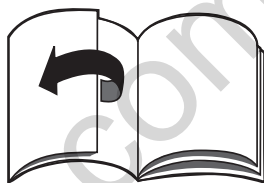


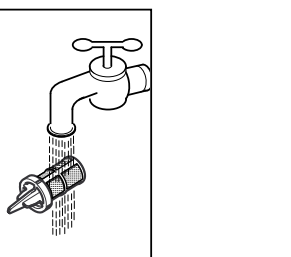
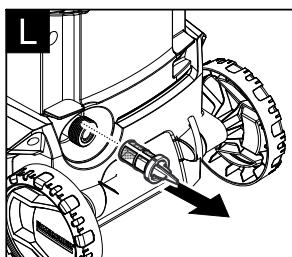
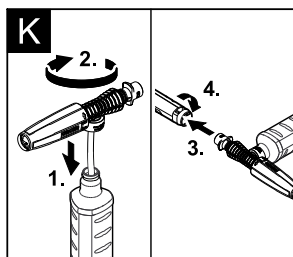
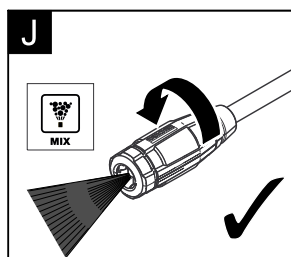
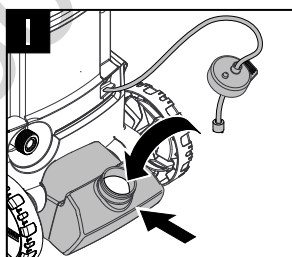
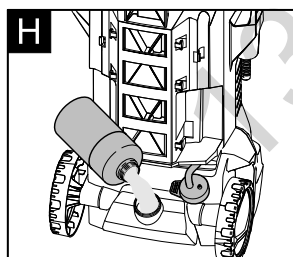
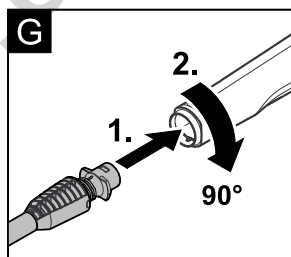
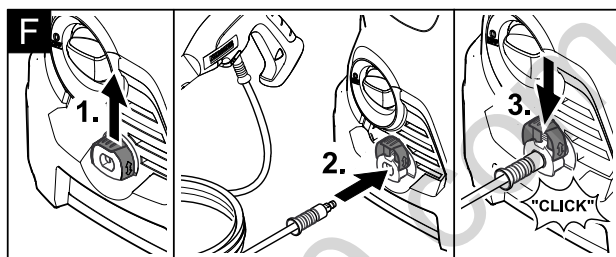
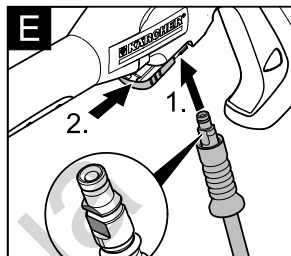
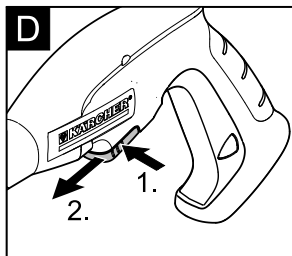
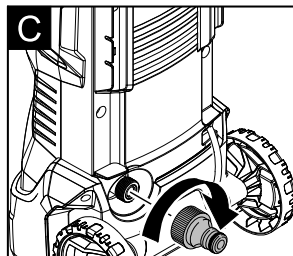
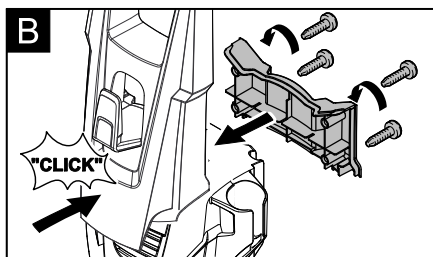
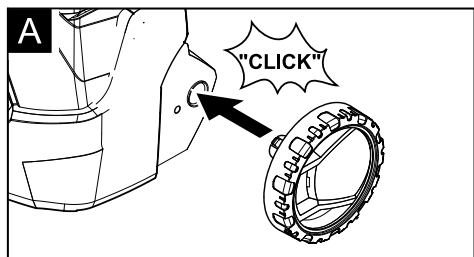
EAC

Autogoods "130"



59676310 (11/16)





Contents

| | | |
|------------------------------------|----|---|
| Safety | EN | 5 |
| Environmental protection | EN | 5 |
| Description of the Appliance | EN | 6 |
| Assembly | EN | 6 |
| Start up | EN | 6 |
| Operation | EN | 7 |
| Transport | EN | 7 |
| Storage | EN | 8 |
| Care and maintenance | EN | 8 |
| Troubleshooting | EN | 8 |
| Accessories and Spare Parts | EN | 8 |
| Warranty | EN | 9 |
| Technical specifications | EN | 9 |
| EU Declaration of Conformity | EN | 9 |

Safety



Please read these original operating instructions and the enclosed safety instructions prior to the initial use of your device. Proceed accordingly. Keep both booklets for future reference or subsequent owners.

Proper use

This high pressure cleaner is designed for domestic use only.

- for cleaning machines, vehicles, buildings, tools, facades, terraces, gardening tools, etc. by means of a high-pressure water jet (if necessary, with additional cleaning agents).
- with accessories, replacement parts and cleaning agents approved by KÄRCHER. Please observe the information accompanying the cleaning agents.

Hazard levels

⚠ DANGER

Pointer to immediate danger, which leads to severe injuries or death.

⚠ WARNING

Pointer to a possibly dangerous situation, which can lead to severe injuries or death.

⚠ CAUTION

Pointer to a possibly dangerous situation, which can lead to minor injuries.

ATTENTION

Pointer to a possibly dangerous situation, which can lead to property damage.

Symbols on the machine



The high pressure jet must not be directed at persons, animals, live electrical equipment or at the appliance itself.

Protect the appliance against frost.



The appliance must not be directly connected to the public drinking water network.

Safety Devices

⚠ CAUTION

- Safety installations serve the protection of the user and may not be modified or bypassed.

Appliance switch

The appliance switch prevents unintentional operation of the appliance.

Lock trigger gun

This lock locks the lever of the trigger gun and prevents the inadvertent start of the appliance.

Overflow valve with pressure switch

If the lever on the trigger gun is released the pressure switch turns off the pump, the high pressure jet is stopped. If the lever is pulled the pump is turned on again.

Environmental protection

Notes about the ingredients (REACH)

You will find current information about the ingredients at:

www.kaercher.com/REACH



The packaging material can be recycled. Please arrange for the environmentally appropriate disposal of the packaging.



Old appliances contain valuable recyclable materials that should be recycled properly. Please arrange for the environmentally appropriate disposal of the old devices.

Electrical and electronic devices often contain components which could potentially pose a danger to human health and the environment if handled or disposed of incorrectly. However, these components are necessary for the proper operation of the device. Devices marked with this symbol must not be disposed of with regular household rubbish.



Cleaning operations which produce oily waste water, e.g. engine washes, underbody washes, may only be carried out using washing stations equipped with an oil separator.



Work with detergents must only be performed on liquid-tight work surfaces with a connection to the sewer system. Do not let release detergent into waters or earth.

Description of the Appliance

These operating instructions describe the maximum equipment. Depending on the model, there are differences in the scopes of delivery (see packaging). The scope of delivery of your appliance is illustrated on the packaging. Check the contents of the appliance for completeness when unpacking. In the event of missing accessories or any transport damage, please contact your dealer.

Illustrations on fold-out page!

- 1 High pressure connection
 - 2 Appliance switch „0/OFF“ / „I/ON“
 - 3 Storage hook for mains connection cable
 - 4 Storage for high pressure hose
 - 5 Transport handle
 - 6 Water connection with integrated sieve
 - 7 Detergent suction hose with detergent filter and lid
 - 8 Detergent Tank
 - 9 Coupling element for water connection
 - 10 Storage for spray lance
 - 11 Storage for trigger gun
 - 12 Mains cable with mains plug
 - 13 Bearing wheel
 - 14 Trigger gun
 - 15 Lock trigger gun
 - 16 Clamp for high pressure hose
 - 17 High pressure hose
 - 18 Spray lance with pressure regulation (Vario Power)
Carrying out the most common cleaning tasks. The work pressure can be stagelessly regulated between "Min" and "Max". You can add detergent when "Mix" is selected.
In order to adjust the working pressure, release the lever of the trigger gun and turn the spray lance to the desired position.
 - 19 Spray lance with Dirtblaster
For strong contaminations
- * Optional**
- 20 Washing brush
Suitable for use with detergents.
 - 21 Foam nozzle
For effective detergent foam.
 - 22 Detergent
- ** Additionally required**
- 23 Fabric-reinforced water hose with commercially available coupling.
 - Minimum diameter, 1/2 inches (13 mm).
 - Minimum length 7.5 m.

Assembly

Mount loose parts delivered with appliance prior to start-up.

Illustrations on fold-out page!

- Illustration A**
- Insert the transport wheels and lock them.
- Illustration B**
- Insert the transport handle and screw in.
- Illustration C**
- Screw the coupling element to the water connection on the appliance.
- Illustration D**
- Pull out the clamp for the high pressure hose from the trigger gun.
- Illustration E**
- Connect high pressure hose to trigger gun.
- Push the clamp in until it locks. Check the secure connection by pulling on the high-pressure hose.

Start up

- Park the appliance on an even surface.
- Illustration F**
- Connect the high pressure hose to the high pressure connection of the appliance.
- Insert the mains plug into the socket.

Water supply from mains

For connection values, see type plate/technical data. Observe regulations of water supplier.

ATTENTION

Impurities in the water can damage the high-pressure pump and the accessories. For protection, the use of the KÄRCHER water filter (optional accessory, order no. 4.730-059) is recommended.

- Attach the water supply hose to the coupling on the water connection.
- Connect the water supply hose to the water supply.
- Completely open the water tap.

Operation

ATTENTION

Dry running of more than 2 minutes leads to damage of the high-pressure pump. If the appliance does not build up pressure within 2 minutes, switch the appliance off and proceed in accordance with the instructions in Chapter "Troubleshooting".

High pressure operation

⚠ CAUTION

Keep a distance of at least 30 cm when using the jet for cleaning painted surfaces to avoid damage.

ATTENTION

Car tyres, paint or sensitive surfaces such as wood should not be cleaned with the dirt blaster, as there is a risk of damage.

Illustration G

- ➔ Push the spray lance into the trigger gun and fasten it by turning it through 90°.
- ➔ Turn on the appliance "I/ON".
- ➔ Unlock the lever on the trigger gun.
- ➔ Pull on the lever of the trigger gun; the device will switch on.

Note: Release the lever of the trigger gun; the device will switch off again. High pressure remains in the system.

Operation with detergent

Note: Detergent can only be added when the device is operated in low pressure mode.

⚠ DANGER

When using detergents, the material data safety sheet issued by the detergent manufacturer must be adhered to, especially the instructions regarding personal protective equipment.

Illustration H

- ➔ Fill the detergent solution in the detergent tank (observe dosage instructions on the packaging of the detergent).

Illustration I

- ➔ Close the detergent tank with the lid.
- ➔ Lock the detergent tank in place on the appliance.

Illustration J

- ➔ Use spray lance with pressure regulation (Vario Power).
- ➔ Turn the spray lance to "Mix" position.

Note: This will mix the detergent with the water stream.

Optional

Illustration K

- ➔ Connect the detergent tank to the foam nozzle.
- ➔ Connect the foam nozzle to the trigger gun.

Recommended cleaning method

- ➔ Spray the detergent sparingly on the dry surface and allow it to react, but not to dry.
- ➔ Spray off loosened dirt with the high pressure jet.

Operation with washing brush

ATTENTION

Risk of damage to the paintwork

When working with the washing brush, it must be free of dirt or other particles.

- ➔ Push the washing brush into the trigger gun and fasten it by a 90° turn.

Note: If required, the washing brushes can be used to work with detergent.

Interrupting operation

- ➔ Release the lever on the trigger gun.
- ➔ Lock the lever on the trigger gun.
- ➔ Insert the trigger gun in its holder.
- ➔ During longer breaks (more than 5 minutes), also turn the appliance off using the "0/OFF" switch.

Finish operation

⚠ CAUTION

Only separate the high-pressure hose from the hand spray gun or the appliance when there is no pressure in the system.

- ➔ After operation with detergent: Run the machine for approximately 1 minute for a clear rinse.
- ➔ Release the lever on the trigger gun.
- ➔ Turn off the appliance "0/OFF".
- ➔ Disconnect the mains plug from the socket.
- ➔ Turn off tap.
- ➔ Press the lever on the trigger gun to release any remaining pressure in the system.
- ➔ Lock the lever on the trigger gun.
- ➔ Detach the appliance from the water supply.

Transport

⚠ CAUTION

Risk of personal injury or damage!

Mind the weight of the appliance during transport.

When transporting by hand

- ➔ Pull the appliance by its transport handle.

When transporting in vehicles

- ➔ Empty detergent tank.
- ➔ Secure the appliance against shifting and tipping over.

Storage

⚠ CAUTION

Risk of personal injury or damage!

Consider the weight of the appliance when storing it.

Storing the Appliance

Prior to extended storage periods, as during the winter, also observe the instructions in the Care section.

- ➔ Park the machine on an even surface.
- ➔ Push the casing of the quick coupling for the high pressure hose toward the rear and disconnect the high pressure hose from the appliance.
- ➔ Press the disconnect on the trigger gun and remove the high pressure hose from the trigger gun.
- ➔ Insert the trigger gun in its holder.
- ➔ Engage the spray lance in its compartment.
- ➔ Stow away the mains cable, the high-pressure hose and accessory on the appliance.

Frost protection

ATTENTION

Appliances and accessories that are not completely drained can be destroyed by frost. Completely drain appliance and accessories and protect them against frost. To avoid damage:

- ➔ Completely drain all water from the appliance: Switch the appliance on with detached high pressure hose and detached water supply (max. 1 minute) and wait, until no more water exits at the high pressure connection. Turn off the appliance.
- ➔ Store the appliance and the entire accessories in a frost free room.

Care and maintenance

⚠ DANGER

Risk of electric shock.

- *Prior to all work on the appliance, switch off the appliance and pull the power plug.*

Clean the sieve in the water connection

Clean the sieve in the water connection regularly.

- ➔ Remove coupling from the water connection.

Illustration **L**

ATTENTION

The sieve must not be damaged.

- ➔ Pull the sieve out using flat pliers.
- ➔ Clean the sieve under running water.
- ➔ Reinsert the sieve into the water connection.

Cleaning the detergent filter

Prior to longer periods of storage, e.g. in the winter:

- ➔ Remove filter from suction hose for detergent and clean under running water.

Troubleshooting

You can rectify minor faults yourself with the help of the following overview.

If in doubt, please consult the authorized customer service.

⚠ DANGER

Risk of electric shock.

- ➔ *Prior to all work on the appliance, switch off the appliance and pull the power plug.*

Appliance is not running

- ➔ Pull on the lever of the trigger gun; the device will switch on.
- ➔ Check whether the voltage indicated on the type plate corresponds to the voltage of the mains supply.
- ➔ Check the mains connection cable for damages.

Pressure does not build up in the appliance

- ➔ Check setting at the spray lance.
- ➔ Check water supply for adequate delivery rate.
- ➔ Pull out the sieve in the water connection using flat-nose pliers and clean under running water.
- ➔ Appliance ventilation: Switch the appliance on with the high-pressure hose detached and operate (max. 2 minutes) until the water exits the high-pressure connection without bubbles. Switch off appliance and reconnect high-pressure hose.

Strong pressure fluctuations

- ➔ Clean high-pressure nozzle: Remove dirt and debris from the nozzle bore, using a needle and rinse through with water from the front.
- ➔ Check water flow quantity.

Appliance is leaking

- ➔ Slight leakage from the appliance pump is normal. If the leakage increases contact the authorized customer service.

No detergent infeed

- ➔ Use spray lance with pressure regulation (Vario Power).
Turn the spray lance to "Mix" position.
- ➔ Clean the detergent suction hose filter.
- ➔ Check the detergent suction hose for kinks.

Accessories and Spare Parts

Only use original accessories and spare parts, they ensure the safe and trouble-free operation of the device.

For information about accessories and spare parts, please visit www.kaercher.com.

Warranty

The warranty terms published by the relevant sales company are applicable in each country. We will repair potential failures of your appliance within the warranty period free of charge, provided that such failure is caused by faulty material or defects in manufacturing. In the event of a warranty claim please contact your dealer or the nearest authorized Customer Service centre. Please submit the proof of purchase.

Addresses can be found under:

www.kaercher.com/dealersearch

Technical specifications

Electrical connection

| | |
|---------|-------------------------|
| Voltage | 220-240 V 1~50-60 Hz |
|---------|-------------------------|

| | |
|-------------------|-----|
| Power consumption | 6 A |
|-------------------|-----|

| | |
|------------------|-------|
| Protection class | IP X5 |
|------------------|-------|

| | |
|------------------|------|
| Protective class | II □ |
|------------------|------|

| | |
|------------------------|------|
| Mains fuse (slow-blow) | 10 A |
|------------------------|------|

Water connection

| | |
|--------------------|---------|
| Max. feed pressure | 1,2 MPa |
|--------------------|---------|

| | |
|-----------------------|-------|
| Max. feed temperature | 40 °C |
|-----------------------|-------|

| | |
|------------------|---------|
| Min. feed volume | 8 l/min |
|------------------|---------|

Performance data

| | |
|------------------|-------|
| Working pressure | 8 MPa |
|------------------|-------|

| | |
|---------------------------|--------|
| Max. permissible pressure | 12 MPa |
|---------------------------|--------|

| | |
|-----------------|-----------|
| Water flow rate | 5,7 l/min |
|-----------------|-----------|

| | |
|----------------|-----------|
| Max. flow rate | 6,3 l/min |
|----------------|-----------|

| | |
|---------------------|-----------|
| Detergent flow rate | 0,3 l/min |
|---------------------|-----------|

| | |
|-----------------------------|------|
| Recoil force of trigger gun | 12 N |
|-----------------------------|------|

Dimensions and weights

| | |
|--------|--------|
| Length | 275 mm |
|--------|--------|

| | |
|-------|--------|
| Width | 276 mm |
|-------|--------|

| | |
|--------|--------|
| Height | 803 mm |
|--------|--------|

| | |
|---|--------|
| Weight, ready to operate with accessories | 6,0 kg |
|---|--------|

Values determined as per EN 60335-2-79

| | |
|--------------------------|-----------|
| Hand-arm vibration value | <2,5 m/s² |
|--------------------------|-----------|

| | |
|---------------|----------|
| Uncertainty K | 0,3 m/s² |
|---------------|----------|

| | |
|--------------------------------------|----------|
| Sound pressure level L _{pA} | 74 dB(A) |
|--------------------------------------|----------|

| | |
|-----------------------------|---------|
| Uncertainty K _{pA} | 3 dB(A) |
|-----------------------------|---------|

| | |
|---|----------|
| Sound power level L _{WA} + Uncertainty | 90 dB(A) |
|---|----------|

K_{WA}

Subject to technical changes.

EU Declaration of Conformity

We hereby declare that the machine described below complies with the relevant basic safety and health requirements of the EU Directives, both in its basic design and construction as well as in the version put into circulation by us. This declaration shall cease to be valid if the machine is modified without our prior approval.

Product: High pressure cleaner

Type: 1.676-xxx

Relevant EU Directives

2000/14/EC

2014/30/EU

2006/42/EC (+2009/127/EC)

2011/65/EU

Applied harmonized standards

EN 50581

EN 55014-1: 2006+A1: 2009+A2: 2011

EN 55014-2: 2015

EN 60335-1

EN 60335-2-79

EN 61000-3-2: 2014

EN 61000-3-3: 2013

EN 62233: 2008

Applied conformity evaluation method

2000/14/EC: Appendix V

Sound power level dB(A)

Measured: 88

Guaranteed: 90

The undersigned act on behalf and under the power of attorney of the company management.


H. Jenner

CEO


S. Reiser

Head of Approbation

Authorised Documentation Representative
S. Reiser

Alfred Kärcher GmbH Co. KG

Alfred-Kärcher-Str. 28 - 40

71364 Winnenden (Germany)

Phone: +49 7195 14-0

Fax: +49 7195 14-2212

Winnenden, 2016/04/01

130.com.ua



<http://www.kaercher.com/dealersearch>

