



PHONES

(044) 338-0-130
 (050) 332-0-130
 (063) 577-0-130
 (067) 353-0-130

130
 COM.UA

Internet store of
 autogoods



SKYPE
 km-130

CAR RECEIVERS — Receivers • Media receivers and stations • Native receivers • CD/DVD changers • FM-modulators/USB adapters • Flash memory • Facia plates and adapters • Antennas • Accessories |
 CAR AUDIO — Car audio speakers • Amplifiers • Subwoofers • Processors • Crossovers • Headphones • Accessories | TRIP COMPUTERS — Universal computers • Model computers • Accessories |
 GPS NAVIGATORS — Portable GPS • Built-in GPS • GPS modules • GPS trackers • Antennas for GPS navigators • Accessories | VIDEO — DVR • TV sets and monitors • Car TV tuners • Cameras • Videomodules
 • Transcoders • Car TV antennas • Accessories | SECURITY SYSTEMS — Car alarms • Bike alarms • Mechanical blockers • Immobilizers • Sensors • Accessories | OPTIC AND LIGHT — Xenon • Bixenon • Lamps
 • LED • Stroboscopes • Optic and Headlights • Washers • Light, rain sensors • Accessories | PARKTRONICS AND MIRRORS — Rear parktronic • Front parktronic • Combined parktronic • Rear-view mirrors
 • Accessories | HEATING AND COOLING — Seat heaters • Mirrors heaters • Screen-wipers heaters • Engine heaters • Auto-refrigerators • Air conditioning units • Accessories | TUNING — Vibro-isolation
 • Noise-isolation • Tint films • Accessories | ACCESSORIES — Radar-detectors • Handsfree, Bluetooth • Windowlifters • Compressors • Beeps, loudspeakers • Measuring instruments • Cleaners • Carsits
 • Miscellaneous | MOUNTING — Installation kits • Upholstery • Grilles • Tubes • Cable and wire • Tools • Miscellaneous | POWER — Batteries • Converters • Start-charging equipment • Capacitors
 • Accessories | MARINE AUDIO AND ELECTRONICS — Marine receivers • Marine audio speakers • Marine subwoofers • Marine amplifiers • Accessories | CAR CARE PRODUCTS — Additives • Washer fluid •
 Care accessories • Car polish • Flavors • Adhesives and sealants | LIQUID AND OIL — Motor oil • Transmission oil • Brake fluid • Antifreeze • Technical lubricant



In store "130" you can find and buy almost all necessary goods for your auto in Kyiv and other cities, delivery by ground and postal services. Our experienced consultants will provide you with exhaustive information and help you to chose the very particular thing. We are waiting for you at the address

<http://130.com.ua>

KÄRCHER

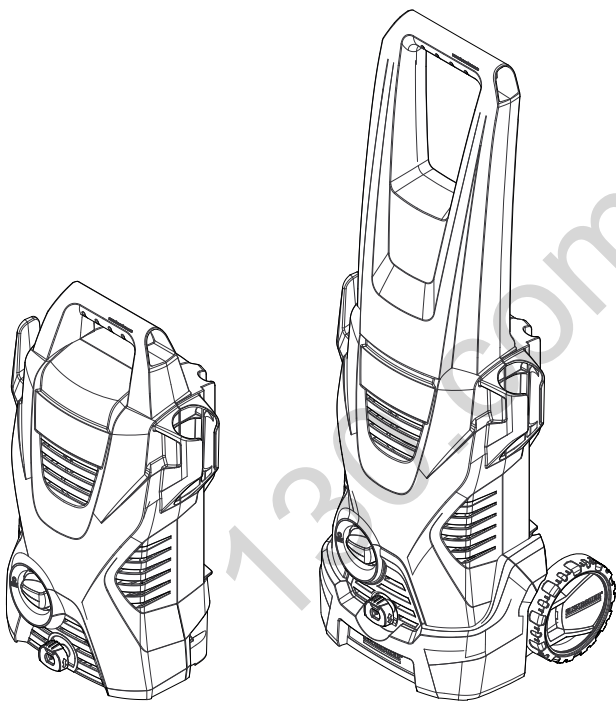
makes a difference

K 2 Basic
K 2 Compact

K 2
K 2 Premium

English

12



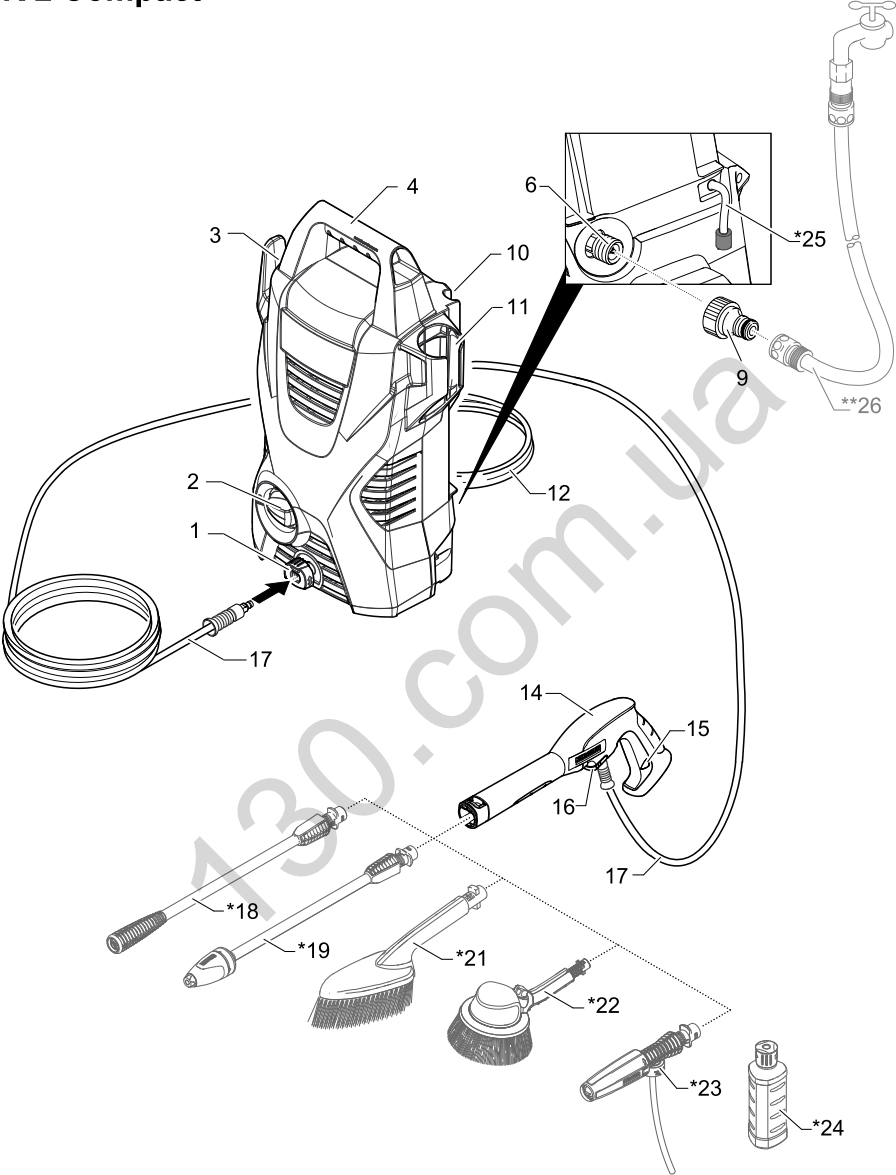
EAC

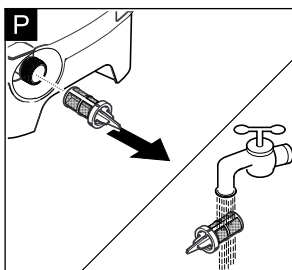
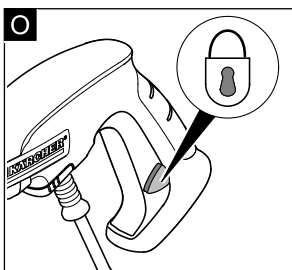
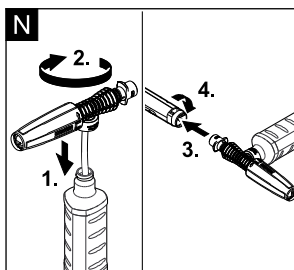
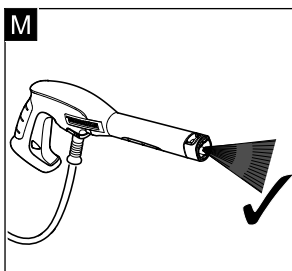
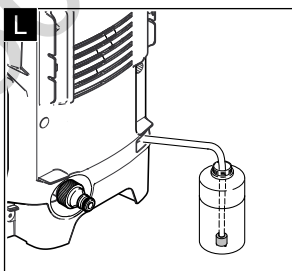
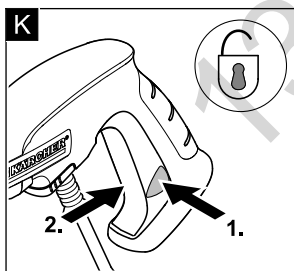
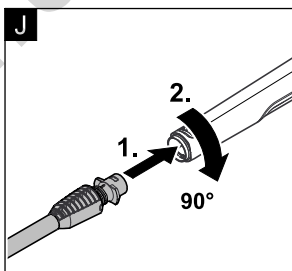
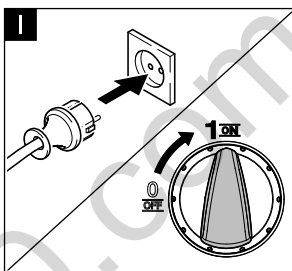
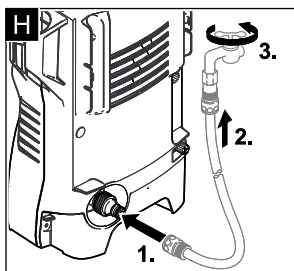
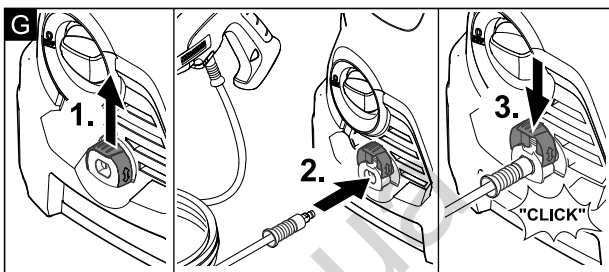
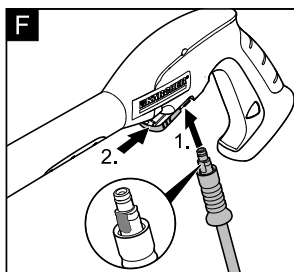
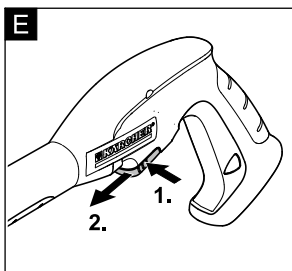
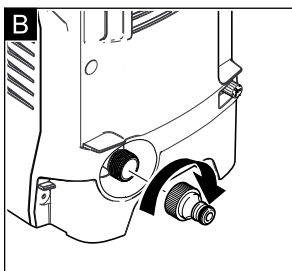
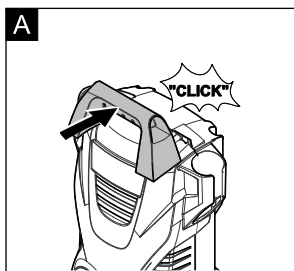
Autogoods "130"



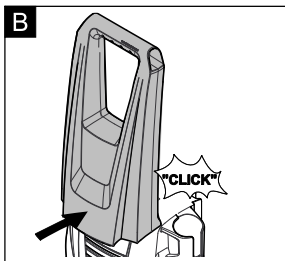
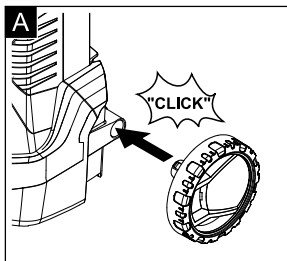
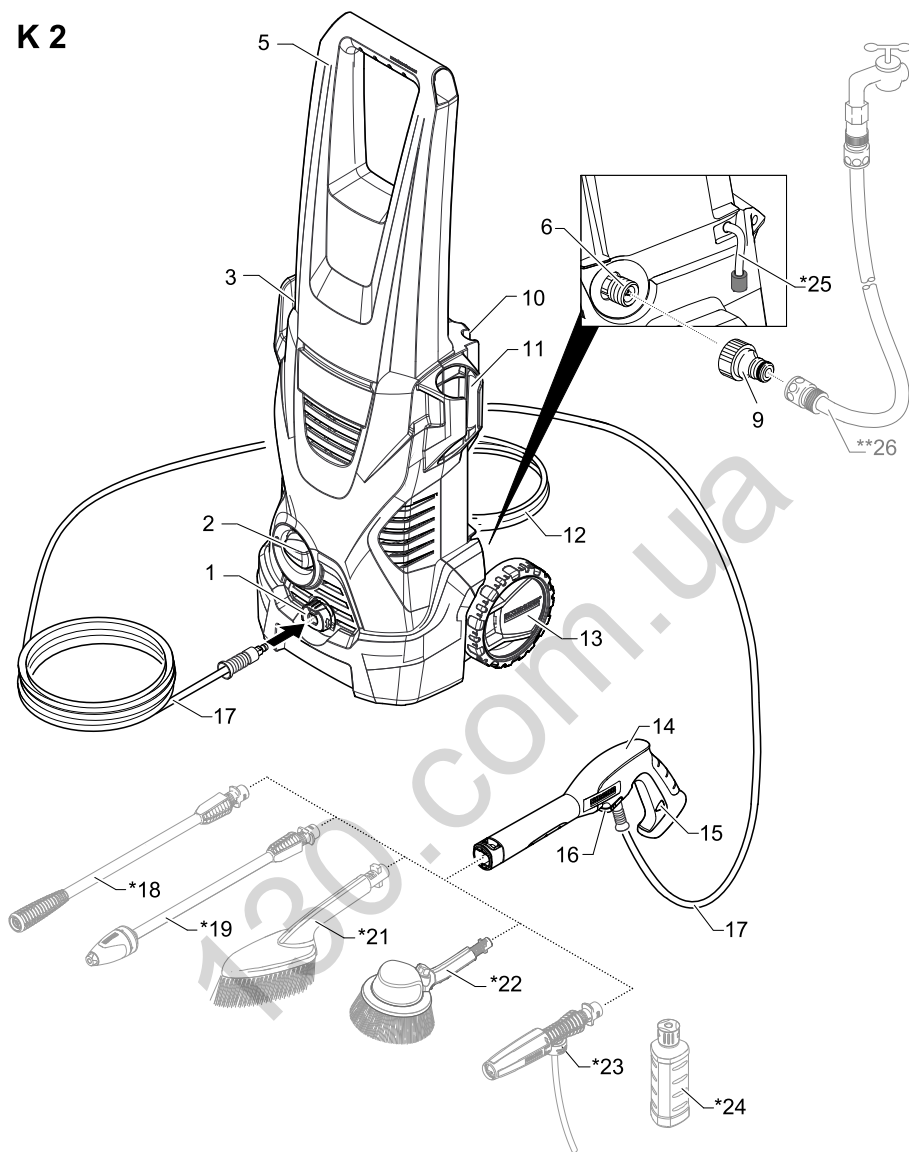
59674570 (11/16)

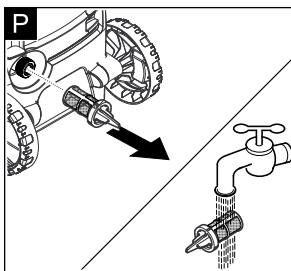
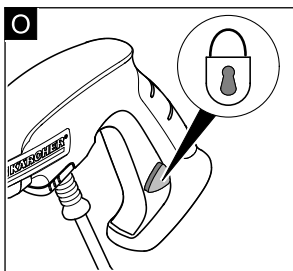
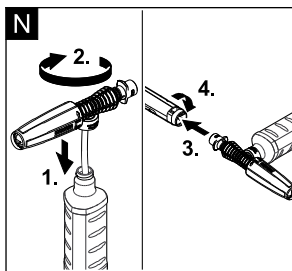
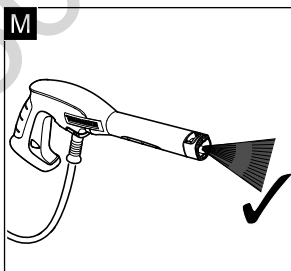
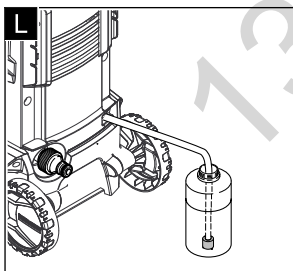
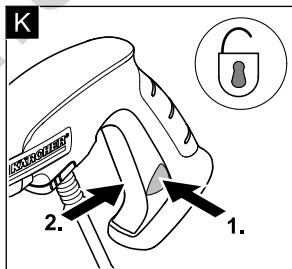
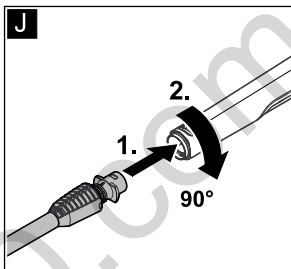
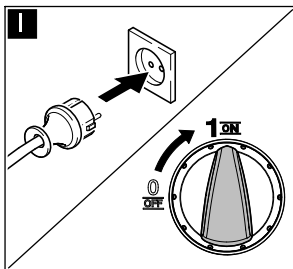
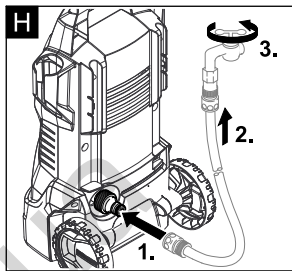
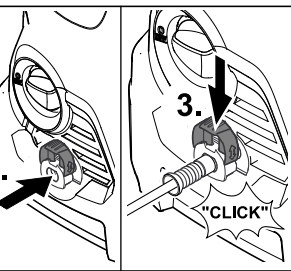
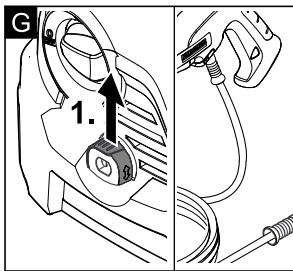
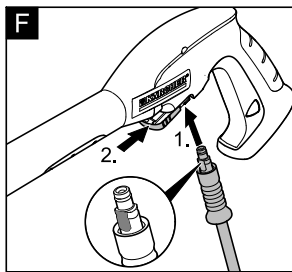
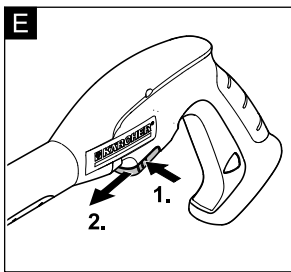
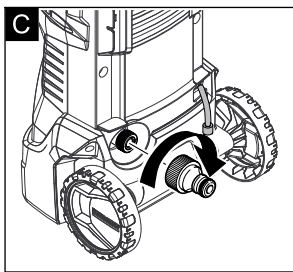
K 2 Basic
K 2 Compact



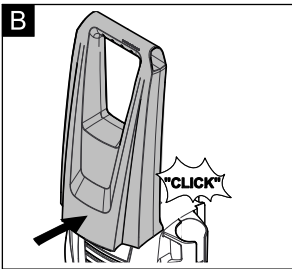
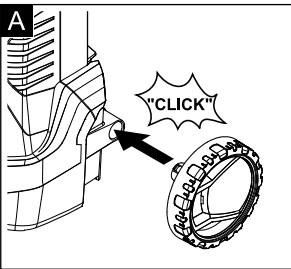
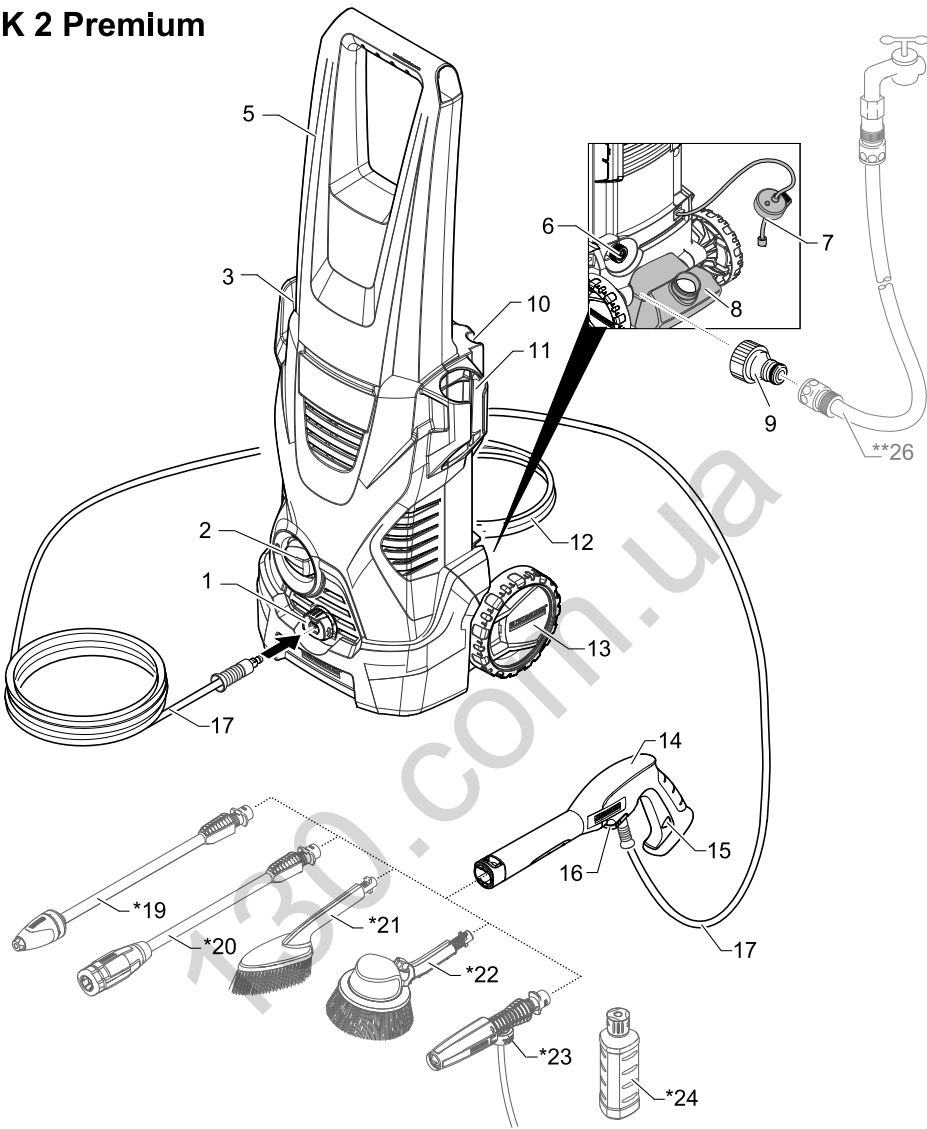


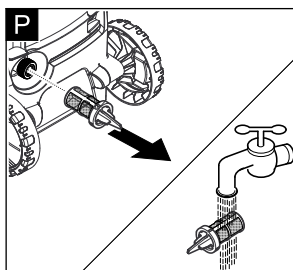
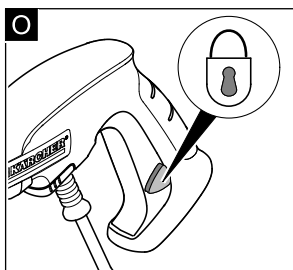
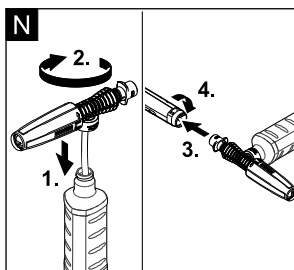
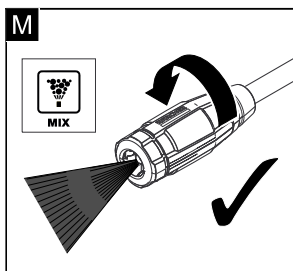
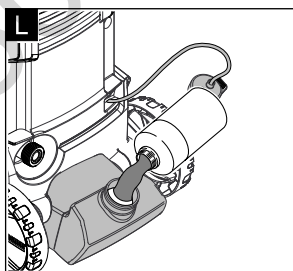
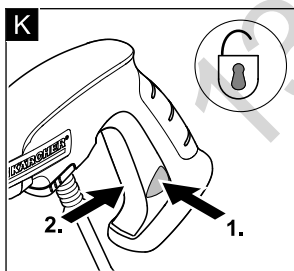
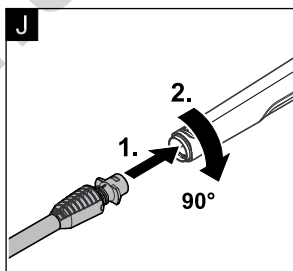
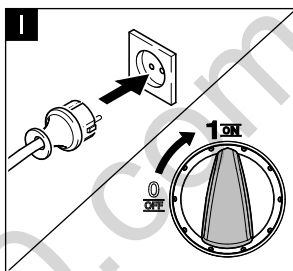
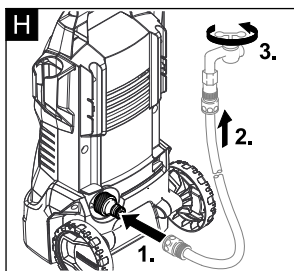
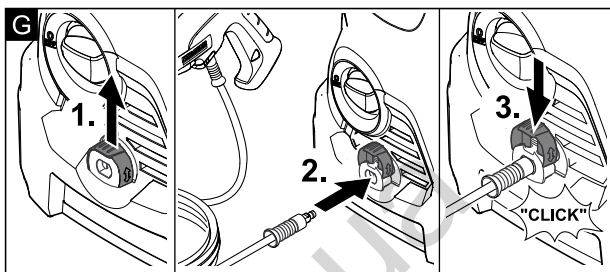
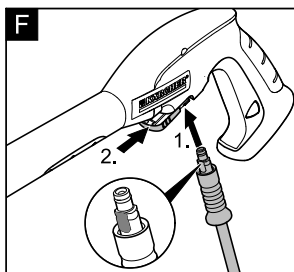
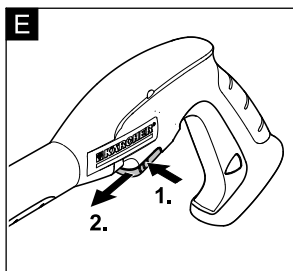
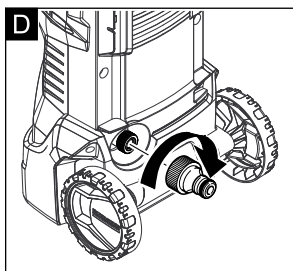
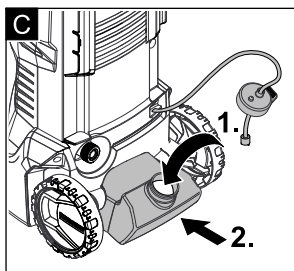
K 2





K 2 Premium





Contents

Safety	EN 8
Environmental protection	EN 8
Description of the Appliance	EN 9
Installation and Startup	EN 9
Operation	EN 9
Transport and storage	EN 10
Maintenance and care	EN 10
Troubleshooting	EN 10
Accessories and Spare Parts	EN 10
Warranty	EN 10
Technical specifications	EN 11
EU Declaration of Conformity	EN 11

Safety



Please read these original operating instructions and the enclosed safety instructions prior to the initial use of your device. Proceed accordingly. Keep both booklets for future reference or subsequent owners.

Proper use

This high pressure cleaner is designed for domestic use only.

- for cleaning machines, vehicles, buildings, tools, facades, terraces, gardening tools, etc. by means of a high-pressure water jet (if necessary, with additional cleaning agents).
- with accessories, replacement parts and cleaning agents approved by KÄRCHER. Please observe the information accompanying the cleaning agents.

Hazard levels

⚠ DANGER

Pointer to immediate danger, which leads to severe injuries or death.

⚠ WARNING

Pointer to a possibly dangerous situation, which can lead to severe injuries or death.

⚠ CAUTION

Pointer to a possibly dangerous situation, which can lead to minor injuries.

ATTENTION

Pointer to a possibly dangerous situation, which can lead to property damage.

Symbols on the machine



The high pressure jet must not be directed at persons, animals, live electrical equipment or at the appliance itself.

Protect the appliance against frost.



The appliance must not be directly connected to the public drinking water network.

Safety Devices

⚠ CAUTION

Safety installations serve the protection of the user and may not be modified or bypassed.

Appliance switch

The appliance switch prevents unintentional operation of the appliance.

Lock trigger gun

The lock locks the lever of the trigger gun und prevents the accidental start of the device.

Auto-stop function

If the lever on the trigger gun is released, the pressure switch turns off the pump, the high-pressure jet stops. If the lever is pulled the pump is turned on again.

Environmental protection

Notes about the ingredients (REACH)

You will find current information about the ingredients at:

www.kaercher.com/REACH



The packaging material can be recycled. Please arrange for the environmentally appropriate disposal of the packaging.



Old appliances contain valuable recyclable materials that should be recycled properly. Please arrange for the environmentally appropriate disposal of the old devices.

Electrical and electronic devices often contain components which could potentially pose a danger to human health and the environment if handled or disposed of incorrectly. However, these components are necessary for the proper operation of the device. Devices marked with this symbol must not be disposed of with regular household rubbish.



Cleaning operations which produce oily waste water, e.g. engine washes, underbody washes, may only be carried out using washing stations equipped with an oil separator.



Work with detergents must only be performed on liquid-tight work surfaces with a connection to the sewer system. Do not let release detergent into waters or earth.

Description of the Appliance

The scope of delivery of the device (depending on the model) is illustrated on the packaging. These operating instructions describe all possible options.

Illustrations on the picture pages

- 1 High pressure connection
- 2 Appliance switch „0/OFF“ / „I/ON“
- 3 Storage hook
- 4 Carrying handle
- 5 Transport handle
- 6 Water connection with integrated sieve
- 7 Detergent suction hose with detergent filter and lid
- 8 Detergent Tank
- 9 Coupling element for water connection
- 10 Storage for spray lance
- 11 Storage for trigger gun
- 12 Mains cable with mains plug
- 13 Bearing wheel
- 14 Trigger gun
- 15 Lock trigger gun
- 16 Clamp for high pressure hose
- 17 High pressure hose
- * **Optional**
- 18 Spray lance with high pressure nozzle
For normal cleaning tasks.
- 19 Spray lance with Dirtblaster
For strong contaminations
- 20 Spray lance with pressure regulation (Vario Power)
Carrying out the most common cleaning tasks
The working pressure is steplessly adjustable. In order to adjust the working pressure, release the lever of the hand spray gun and turn the spray lance to the desired position. You can add detergent when "Mix" is selected.
- 21 Washing brush
- 22 Rotating washing brush (e.g. for cleaning cars)
- 23 Foam nozzle
For effective detergent foam.
- 24 Detergent
- 25 Detergent suction hose (with sieve)
- ** **Additionally required**
- 26 Fabric-reinforced water hose with commercially available coupling.
 - Minimum diameter, 1/2 inches (13 mm).
 - Minimum length 7.5 m.

Installation and Startup

Illustrations on the picture pages

- Illustrations **A** - **D**
Mount loose parts delivered with appliance prior to start-up.
- Park the appliance on an even surface.
- Illustrations **E** - **F**
Pull out the clamp from the trigger gun and plug the high-pressure hose into the trigger gun.
Push the clamp in until it locks. Check the secure connection by pulling on the high-pressure hose.
- Illustrations **G** - **I**

ATTENTION

Impurities in the water can damage the high-pressure pump and the accessories. For protection, the use of the KÄRCHER water filter (optional accessory, order no. 4.730-059) is recommended.

Operation

⚠ CAUTION

Dry running of more than 2 minutes leads to damage of the high-pressure pump. If the appliance does not build up pressure within 2 minutes, switch the appliance off and proceed in accordance with the instructions in Chapter "Troubleshooting".

High pressure operation

⚠ CAUTION

Keep a distance of at least 30 cm when using the jet for cleaning painted surfaces to avoid damage.

ATTENTION

Car tyres, paint or sensitive surfaces such as wood should not be cleaned with the dirt blaster, as there is a risk of damage.

→ Illustrations **J** - **K**

Operation with washing brush

ATTENTION

Risk of damage to the paintwork

When working with the washing brush, it must be free of dirt or other particles.

Note: If required, the washing brushes can be used to work with detergent.

Operation with detergent

Note: Detergent can only be added when the device is operated in low pressure mode.

Optional

→ Illustrations **L** - **M**

→ Illustration **N**

Recommended cleaning method

- Spray the detergent sparingly on the dry surface and allow it to react, but not to dry.
- Spray off loosened dirt with the high pressure jet.

After operation with detergent

- After operation with detergent: Run the machine for approximately 1 minute for a clear rinse.

Interrupting operation

- Illustration **O**
Release the lever of the trigger gun and lock it.
- During longer breaks (more than 5 minutes), also turn the appliance off using the "0/OFF" switch.

Finish operation

⚠ CAUTION

Only separate the high-pressure hose from the trigger gun or the device when there is no pressure in the system.

- Release the lever of the trigger gun.
- Turn off the appliance "0/OFF".
- Disconnect the mains plug from the socket.
- Turn off tap.
- **Press the lever on the trigger gun to release any remaining pressure in the system.**
- Lock the lever of the trigger gun.
- Detach the appliance from the water supply.

Transport and storage

⚠ CAUTION

Risk of personal injury or damage!

Mind the weight and storage of the appliance during transport.

When transporting by hand

- Lift appliance by the carrying handle and carry it.
- Pull the appliance by its transport handle.

When transporting in vehicles

- Secure the appliance against shifting and tipping over.

Storing the Appliance

- Park the machine on an even surface.
- Stow away the accessories on the appliance according to the device.

Prior to extended storage periods, as during the winter, also observe the instructions in the Care section.

Frost protection

ATTENTION

Appliances and accessories that are not completely drained can be destroyed by frost. Completely drain appliance and accessories and protect them against frost. To avoid damage:

- Completely drain all water from the appliance: Switch the appliance on with detached high pressure hose and detached water supply (max. 1 minute) and wait, until no more water exits at the high pressure connection. Turn off the appliance.
- Store the appliance and the entire accessories in a frost free room.

Maintenance and care

The appliance is maintenance free.

Care

⚠ DANGER

Risk of electric shock.

- Prior to all work on the appliance, switch off the appliance and pull the power plug.

Clean the sieve in the water connection

Clean the sieve in the water connection regularly.

ATTENTION

The sieve must not be damaged.

- Remove coupling from the water connection.

Illustration **P**

- Pull the sieve out (e.g. using flat pliers), clean under running water and then reinsert it.

Troubleshooting

⚠ DANGER

Risk of electric shock.

- Prior to all work on the appliance, switch off the appliance and pull the power plug.

Appliance is not running

- Push the lever of the trigger gun, the device will switch on.
- Check whether the voltage indicated on the type plate corresponds to the voltage of the mains supply.
- Check the mains connection cable for damages.

Pressure does not build up in the appliance

- Completely open the water tap.
- Appliance ventilation: Switch the appliance on with the high-pressure hose detached and operate (max. 2 minutes) until the water exits the high-pressure connection without bubbles. Switch off appliance and reconnect high-pressure hose.
- Pull out the sieve in the water connection using flat-nose pliers and clean under running water.

Strong pressure fluctuations

- Clean high-pressure nozzle: Remove dirt and debris from the nozzle bore, using a needle and rinse through with water from the front.
- Check water flow quantity.

Appliance is leaking

- Slight leakage from the appliance pump is normal. If the leakage increases contact the authorized customer service.

No detergent infeed

- Remove the spray pipe from the trigger gun and work with the trigger gun only or use the spray pipe with pressure regulation and turn to "Mix".
- Remove filter from suction hose for detergent and clean under running water.
- Check the detergent suction hose for kinks.

Accessories and Spare Parts

Only use original accessories and spare parts, they ensure the safe and trouble-free operation of the device. For information about accessories and spare parts, please visit www.kaercher.com.

Warranty

The warranty terms published by the relevant sales company are applicable in each country. We will repair potential failures of your appliance within the warranty period free of charge, provided that such failure is caused by faulty material or defects in manufacturing. In the event of a warranty claim please contact your dealer or the nearest authorized Customer Service centre.

Please submit the proof of purchase.

Addresses can be found under:

www.kaercher.com/dealersearch

Technical specifications

	K 2 Basic	K 2 Compact	K 2	K 2 Premium	
Electrical connection					
Voltage	220-240 1~50-60		V Hz		
Power consumption	6		A		
Protection class	IP X5				
Protective class	II		□		
Mains fuse (slow-blow)	10		A		
Water connection					
Max. feed pressure	1,2		MPa		
Max. feed temperature	40		°C		
Min. feed volume	8		l/min		
Performance data					
Working pressure	7,4		MPa		
Max. permissible pressure	11		MPa		
Water flow rate	5,2	5,5	l/min		
Max. flow rate	6,0		l/min		
Detergent flow rate	0,3		l/min		
Recoil force of the trigger gun	11		N		
Values determined as per EN 60335-2-79					
Hand-arm vibration value	<2,5		m/s²		
Uncertainty K	0,3		m/s²		
Sound pressure level L _{pA}	75		dB(A)		
Uncertainty K _{pA}	3		dB(A)		
Sound power level L _{WA} + Uncertainty K _{WA}	91		dB(A)		
Dimensions and weights					
Length	280	280	mm		
Width	176	242	mm		
Height	443	783	mm		
Weight, ready to operate with accessories	4,7	5,6	5,8	kg	

Subject to technical changes.

EU Declaration of Conformity

We hereby declare that the machine described below complies with the relevant basic safety and health requirements of the EU Directives, both in its basic design and construction as well as in the version put into circulation by us. This declaration shall cease to be valid if the machine is modified without our prior approval.

Product: High pressure cleaner

Type: 1.673-xxx

Relevant EU Directives

2000/14/EC

2014/30/EU

2006/42/EC (+2009/127/EC)

2011/65/EU

Applied harmonized standards

EN 50581

EN 55014-1: 2006+A1: 2009+A2: 2011

EN 55014-2: 2015

EN 60335-1

EN 60335-2-79

EN 61000-3-2: 2014

EN 61000-3-3: 2013

EN 62233: 2008

Applied conformity evaluation method

2000/14/EC: Appendix V


Sound power level dB(A)

Measured: 89

Guaranteed: 91

The undersigned act on behalf and under the power of attorney of the company management.


H. Jenner
CEO


S. Reiser
Head of Approval

Authorised Documentation Representative
S. Reiser

Alfred Kärcher GmbH Co. KG

Alfred-Kärcher-Str. 28 - 40

71364 Winnenden (Germany)

Phone: +49 7195 14-0

Fax: +49 7195 14-2212

Winnenden, 2016/10/01

130.com.ua



<http://www.kaercher.com/dealersearch>

