



PHONES

(044) 360-7-130
(050) 336-0-130
(063) 788-0-130
(067) 233-0-130
(068) 282-0-130

130 Internet store of autogoods

COM.UA



ICQ
294-0-130
597-0-130

SKYPE
km-130

CAR RECEIVERS — Receivers • Media receivers and stations • Native receivers • CD/DVD changers • FM-modulators/USB adapters • Flash memory • Facia plates and adapters • Antennas • Accessories | CAR AUDIO — Car audio speakers • Amplifiers • Subwoofers • Processors • Crossovers • Headphones • Accessories | TRIP COMPUTERS — Universal computers • Model computers • Accessories | GPS NAVIGATORS — Portable GPS • Built-in GPS • GPS modules • GPS trackers • Antennas for GPS navigators • Accessories | VIDEO — DVR • TV sets and monitors • Car TV tuners • Cameras • Videomodules • Transcoders • Car TV antennas • Accessories | SECURITY SYSTEMS — Car alarms • Bike alarms • Mechanical blockers • Immobilizers • Sensors • Accessories | OPTIC AND LIGHT — Xenon • Bixenon • Lamps • LED • Stroboscopes • Optic and Headlights • Washers • Light, rain sensors • Accessories | PARKTRONICS AND MIRRORS — Rear parktronic • Front parktronic • Combined parktronic • Rear-view mirrors • Accessories | HEATING AND COOLING — Seat heaters • Mirrors heaters • Screen-wipers heaters • Engine heaters • Auto-refrigerators • Air conditioning units • Accessories | TUNING — Vibro-isolation • Noise-isolation • Tint films • Accessories | ACCESSORIES — Radar-detectors • Handsfree, Bluetooth • Windowlifters • Compressors • Beeps, loudspeakers • Measuring instruments • Cleaners • Carsits • Miscellaneous | MOUNTING — Installation kits • Upholstery • Grilles • Tubes • Cable and wire • Tools • Miscellaneous | POWER — Batteries • Converters • Start-charging equipment • Capacitors • Accessories | MARINE AUDIO AND ELECTRONICS — Marine receivers • Marine audio speakers • Marine subwoofers • Marine amplifiers • Accessories | CAR CARE PRODUCTS — Additives • Washer fluid • Care accessories • Car polish • Flavors • Adhesives and sealants | LIQUID AND OIL — Motor oil • Transmission oil • Brake fluid • Antifreeze • Technical lubricant



In store "130" you can find and buy almost all necessary goods for your auto in Kyiv and other cities, delivery by ground and postal services. Our experienced consultants will provide you with exhaustive information and help you to chose the very particular thing. We are waiting for you at the address

<http://130.com.ua>

ELATE™ 2-WAY SPECIFICATIONS

<p>5" SYSTEM SPECIFICATIONS</p> <p>Nominal Impedance 4 Ohm Power Handling 160W Max. Transient Power Handling 1000W Sensitivity (2.83V/1M) 88dB Frequency response 35-25000Hz</p> <p>5" WOOFER SPECIFICATIONS</p> <p>Nominal Impedance 4 Ohm Power Handling 160W Max. Transient Power Handling 1000W Sensitivity (2.83V/1M) 88dB Frequency response 35-3600Hz FS 55Hz Voice Coil Diameter 75mm (3") Voice Coil Height 14.5mm (0.57") Voice Coil type/ Former Aluminum Voice Coil Wire Hexatech Aluminum DC Resistance 3.7 Ohm Voice Coil Inductance @1Khz 0.39MH Magnet system Hybrid Rear Vented HE- Magnetic Gap Height 6mm (0.25") B- Flux density 0.8T BL Product/BXL 6.15 Max Linear Excursion/Xmax 8.5mm (± 4.25) Suspension Compliance CMS 676 Mechanical Q factor QES 0.42 Total Q Factor Q/T 0.35 QMS 1.99 Mechanical Resistance RMS 1.03KgS¹ Moving Mass MMS 11.8gr Equivalent Cas Air Load VAS 8 Liters Effective piston area SD 90cm² Cone Type One Piece Formed Cone Material DPC(Damped Polymer Composite) Unit Diameter 135mm (5.25") Mounting Depth 60mm (2.36") Mounting Cutout 136mm (5.36")Dia. Net Weight 1.050Kg</p>	<p>6" SYSTEM SPECIFICATIONS</p> <p>Nominal Impedance 4 Ohm Power Handling 200W Max. Transient Power Handling 1000W Sensitivity (2.83V/1M) 89dB Frequency response 25-25000Hz</p> <p>6" WOOFER SPECIFICATIONS</p> <p>Nominal Impedance 4 Ohm Power Handling 200W Max. Transient Power Handling 1000W Sensitivity (2.83V/1M) 89dB Frequency response 25-4000Hz FS 50Hz Voice Coil Diameter 75mm (3") Voice Coil Height 14.5mm (0.57") Voice Coil type/ Former Aluminum Voice Coil Wire Hexatech Aluminum DC Resistance 3.7 Ohm Voice Coil Inductance @1Khz 0.38MH Magnet system Hybrid Rear Vented HE- Magnetic Gap Height 6mm (0.25") B- Flux density 0.8T BL Product/BXL 6.35 Max Linear Excursion/Xmax 8.5mm (± 4.25) Suspension Compliance CMS 721 Mechanical Q factor QES 0.39 Total Q Factor Q/T 0.33 QMS 2.06 Mechanical Resistance RMS 1.033KgS¹ Moving Mass MMS 13.56gr Equivalent Cas Air Load VAS 14.35 Liters Effective piston area SD 119cm² Cone Type One Piece Formed Cone Material DPC(Damped Polymer Composite) Unit Diameter 165mm (6.5") Mounting Depth 61mm (2.37") Mounting Cutout 141mm (5.55")Dia. Net Weight 1.180Kg</p>	<p>9" SYSTEM SPECIFICATIONS</p> <p>Nominal Impedance 4 Ohm Power Handling 200W Max. Transient Power Handling 1000W Sensitivity (2.83V/1M) 90dB Frequency response 20-25000Hz</p> <p>9" WOOFER SPECIFICATIONS</p> <p>Nominal Impedance 4 Ohm Power Handling 200W Max. Transient Power Handling 1000W Sensitivity (2.83V/1M) 91dB Frequency response 20-3300Hz FS 40Hz Voice Coil Diameter 75mm (3") Voice Coil Height 14.5mm (0.57") Voice Coil type/ Former Aluminum Voice Coil Wire Hexatech Aluminum DC Resistance 3.7 Ohm Voice Coil Inductance @1Khz 0.72MH Magnet system Hybrid Rear Vented HE- Magnetic Gap Height 6mm (0.25") B- Flux density 0.9T BL Product/BXL 7.04 Max Linear Excursion/Xmax 8.5mm (± 4.25) Suspension Compliance CMS 706 Mechanical Q factor QES 0.42 Total Q Factor Q/T 0.35 QMS 2.09 Mechanical Resistance RMS 1.28KgS¹ Moving Mass MMS 21.63gr Equivalent Cas Air Load VAS 47.50 Liters Effective piston area SD 219cm² Cone Type One Piece Formed Cone Material DPC(Damped Polymer Composite) Unit Diameter 222mm (8.75") Mounting Depth 71mm (2.8") Mounting Cutout 192mm (7.56")Dia. Net Weight 1.420Kg</p>
<p>TWEETER MT-23 SPECIFICATIONS</p> <p>Nominal Impedance 6 Ohm Power Handling 130W Max. Transient Power Handling 350W Sensitivity (2.83V/1M) 91dB Frequency response 1400-25000Hz FS 950Hz Voice Coil Diameter 28mm (1.125") Voice Coil Former Aluminum Voice Coil Wire Hexatech Aluminum DC Resistance 5.2 Ohm Magnet system Double Magnet Neodymium Dome Type Acuflex™ Hand Coated Soft Dome Dome Material Silk Unit Diameter 45mm (1.8")Dia. Mounting Depth 20mm (0.8") Mounting Cutout 50mm (2")</p>	<p>ACCUSET MX-22E CROSSOVER</p> <p>Nominal Impedance 4 Ohm Power Handling 280W Crossover Point 1800Hz Crossover Controls Frequency Slope: Cut 6/12 dB. Tweeter Level: ± 4 dB (2 dB steps)</p> <p>Wiring Options Standard, Bi-amp, Bi-wire. Housing Material Die-cast Aluminium Terminal Type Large Screws gold plated Net Weight 1.050 Kg</p>	

ELATE™ 2-WAY 5/6/9

Component Systems Installation Guide



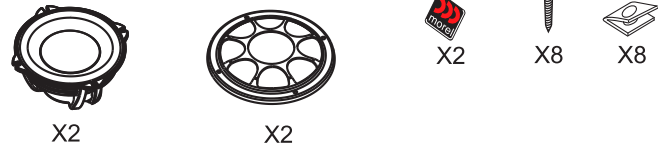
www.morelhifi.com



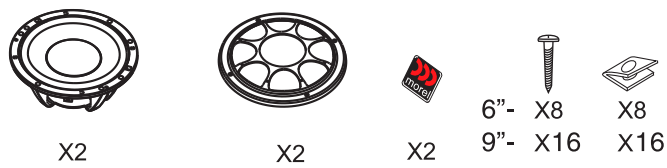
www.morelhifi.com

PACKAGE CONTENT

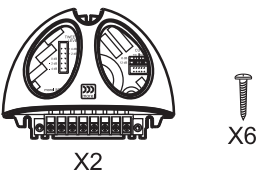
5" ELATE SW WOOFER



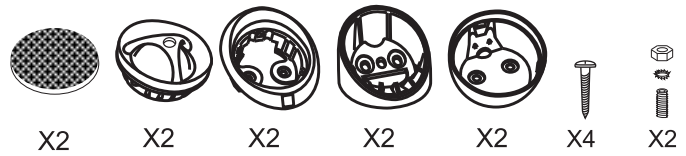
6" & 9" ELATE SW WOOFER



CROSSOVER ACCUSET MX-22E



TWEETER MT-23



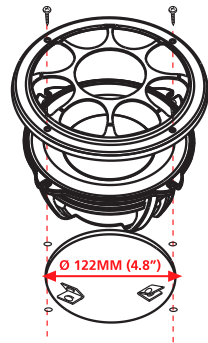
GRILL OPTIONS

SURFACE OPTIONS

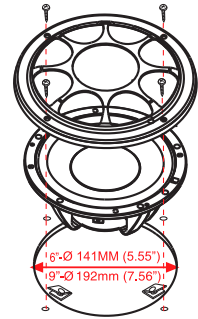


WOOFER & CROSSOVER MOUNTING

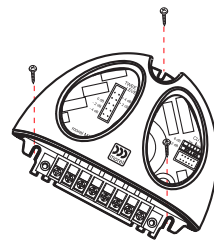
5" UNIT MOUNTING



6" & 9" UNIT MOUNTING



CROSSOVER MOUNTING

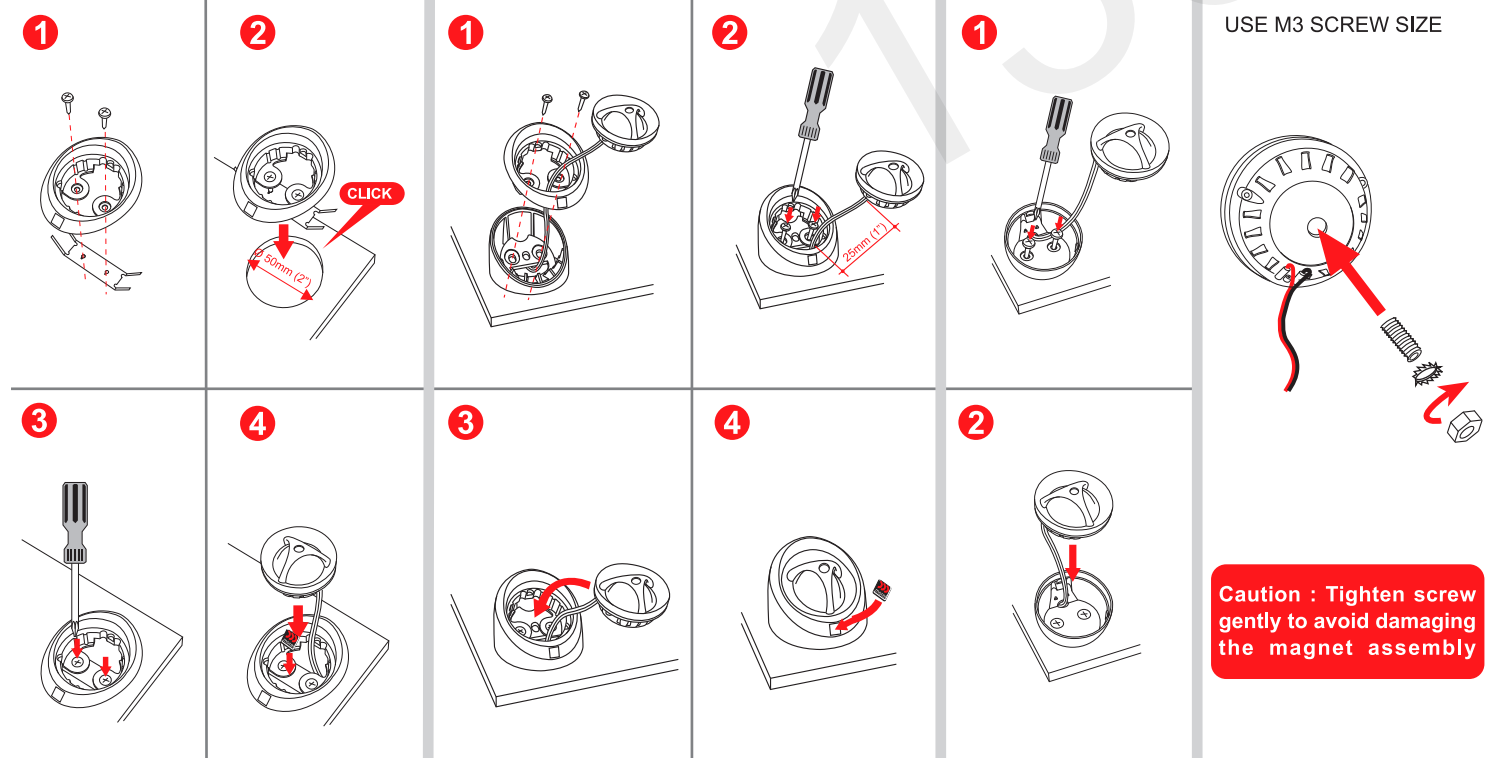


FLUSH MOUNTING

SURFACE MOUNTING

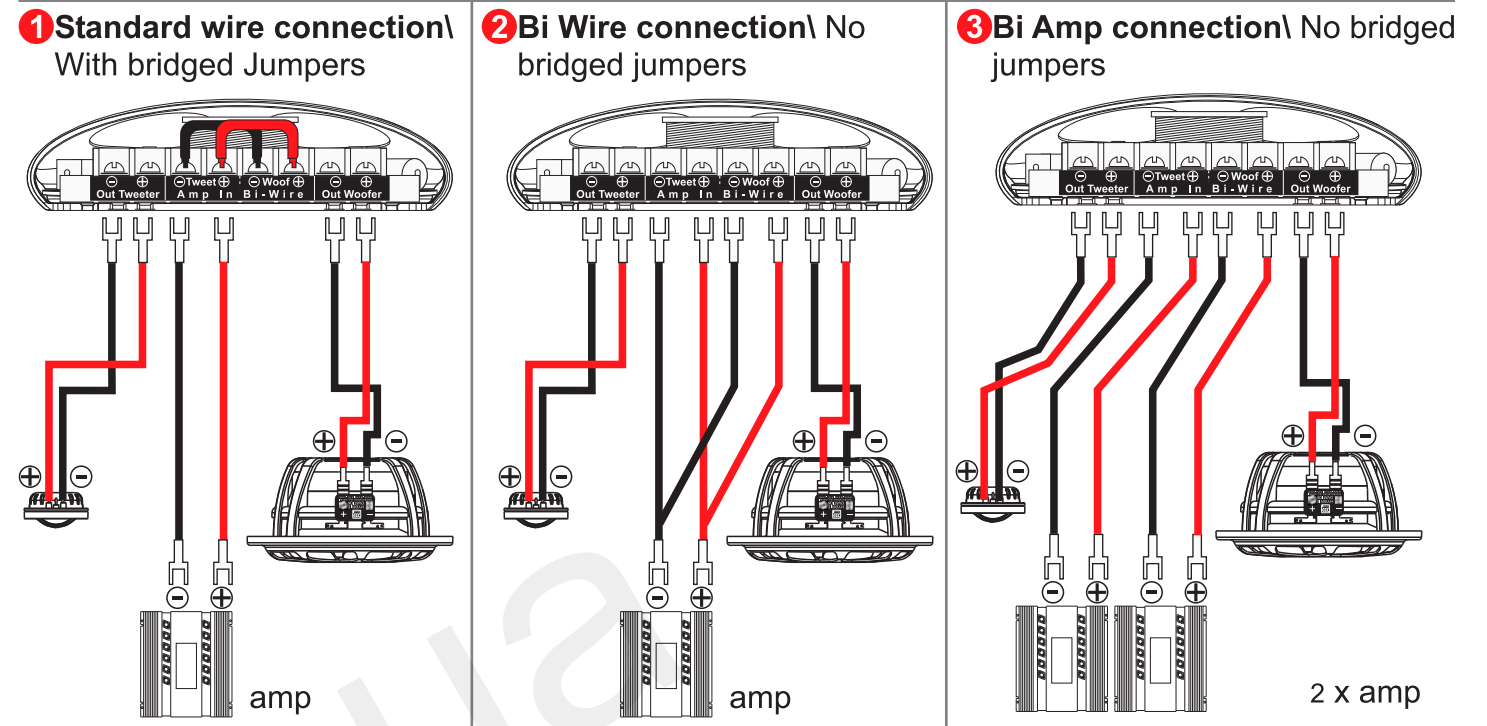
OPTION 3

OPTION 4

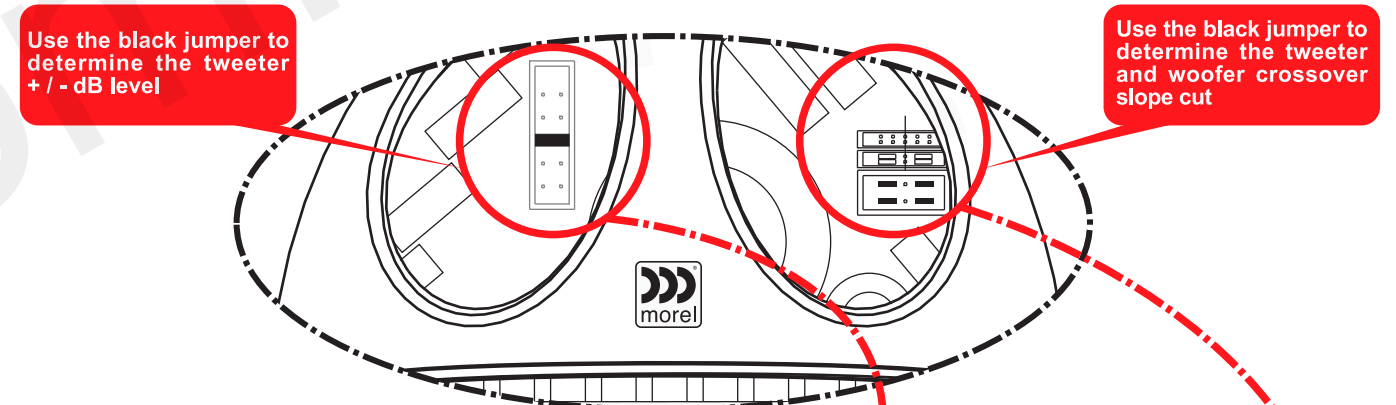


Caution : Tighten screw gently to avoid damaging the magnet assembly

WIRING OPTIONS FOR ACCUSET MX-22E CROSSOVER



ACCUSET MX-22 CROSSOVER ALIGNMENT SYSTEMS



ACCUSET ALIGNMENT SYSTEM

