



PHONES

0 (800) 800 130
(050) 462 0 130
(063) 462 0 130
(067) 462 0 130

130
COM.UA

Internet store of
autogoods



SKYPE

km-130

CAR RECEIVERS — Receivers • Media receivers and stations • Native receivers • CD/DVD changers • FM-modulators/USB adapters • Flash memory • Facia plates and adapters • Antennas • Accessories |
CAR AUDIO — Car audio speakers • Amplifiers • Subwoofers • Processors • Crossovers • Headphones • Accessories | TRIP COMPUTERS — Universal computers • Model computers • Accessories |
GPS NAVIGATORS — Portable GPS • Built-in GPS • GPS modules • GPS trackers • Antennas for GPS navigators • Accessories | VIDEO — DVR • TV sets and monitors • Car TV tuners • Cameras • Videomodules
• Transcoders • Car TV antennas • Accessories | SECURITY SYSTEMS — Car alarms • Bike alarms • Mechanical blockers • Immobilizers • Sensors • Accessories | OPTIC AND LIGHT — Xenon • Bixenon • Lamps
• LED • Stroboscopes • Optic and Headlights • Washers • Light, rain sensors • Accessories | PARKTRONICS AND MIRRORS — Rear parktronic • Front parktronic • Combined parktronic • Rear-view mirrors
• Accessories | HEATING AND COOLING — Seat heaters • Mirrors heaters • Screen-wipers heaters • Engine heaters • Auto-refrigerators • Air conditioning units • Accessories | TUNING — Vibro-isolation
• Noise-isolation • Tint films • Accessories | ACCESSORIES — Radar-detectors • Handsfree, Bluetooth • Windowlifters • Compressors • Beeps, loudspeakers • Measuring instruments • Cleaners • Car seats
• Miscellaneous | MOUNTING — Installation kits • Upholstery • Grilles • Tubes • Cable and wire • Tools • Miscellaneous | POWER — Batteries • Converters • Start-charging equipment • Capacitors
• Accessories | MARINE AUDIO AND ELECTRONICS — Marine receivers • Marine audio speakers • Marine subwoofers • Marine amplifiers • Accessories | CAR CARE PRODUCTS — Additives • Washer fluid •
Care accessories • Car polish • Flavors • Adhesives and sealants | LIQUID AND OIL — Motor oil • Transmission oil • Brake fluid • Antifreeze • Technical lubricant



In store "130" you can find and buy almost all necessary goods for your auto in Kyiv and other cities, delivery by ground and postal services. Our experienced consultants will provide you with exhaustive information and help you to chose the very particular thing. We are waiting for you at the address

<https://130.com.ua>



HYBRID 402/502/602
HYBRID INTEGRA 402/502/602

2-way Component Systems Installation Guide

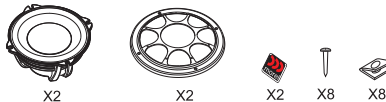
Autogoods™ 130"

PACKAGE CONTENT

4" WOOFER / INTEGRA



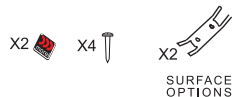
5",6" WOOFER



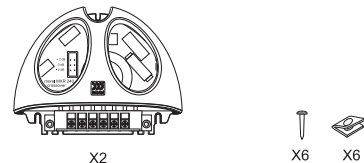
5",6" INTERGRA



MT230 HYBRID COMPONENT TWEETER



MXR240 HYBRID COMPONENT CROSSOVER MXR250i HYBRID INTEGRA COMPONENT CROSSOVER



HYBRID WOOFER / INTEGRA MOUNTING OPTIONS

4" UNIT MOUNTING

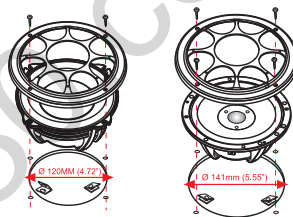
- Use the screw clips in any combination, with or without the plastic frame. These clips can be used either way up down depending on installation requirements.



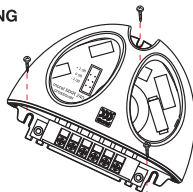
- Use the non-screw clips to install in locations which do not require screws. Insert the clips in the small holes on the side of the loudspeaker according to your requirements.



5",6" UNIT MOUNTING

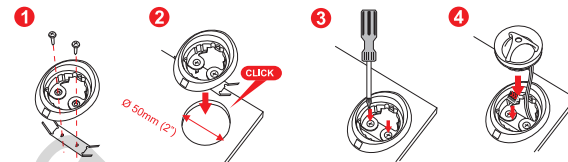


MXR240/ MXR250i CROSSOVER MOUNTING

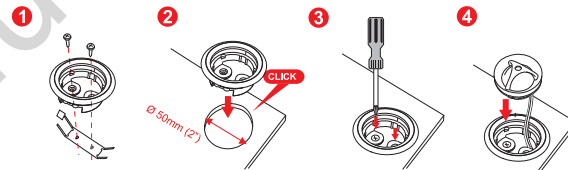


TWEETER MOUNTING OPTIONS (HYBRID COMPONENT)

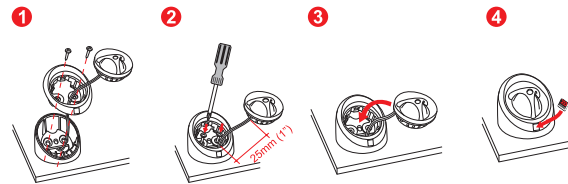
FLUSH MOUNTING OPTION 1



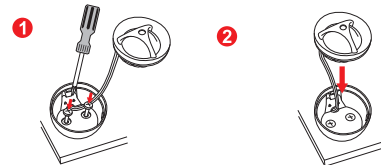
FLUSH MOUNTING OPTION 2



SURFACE MOUNTING OPTION 1

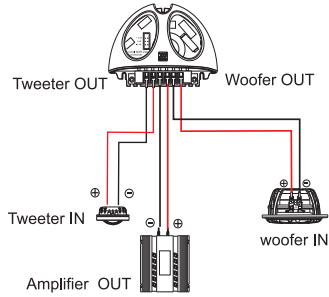


SURFACE MOUNTING OPTION 2



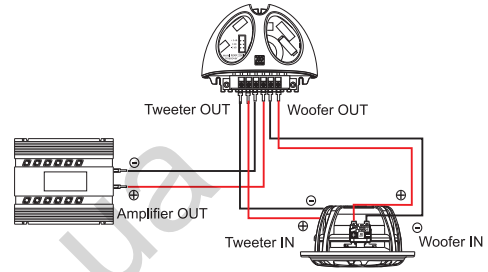
HYBRID MXR240 CROSSOVER WIRING

PASSIVE SET UP

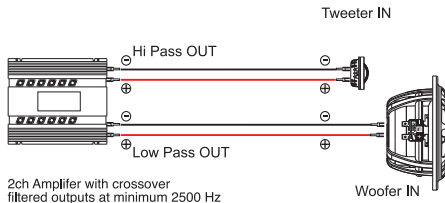


HYBRID INTEGRA MXR250i CROSSOVER WIRING

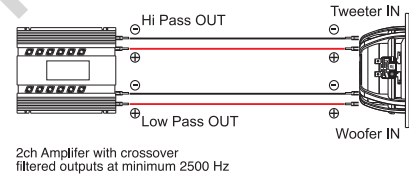
PASSIVE SET UP



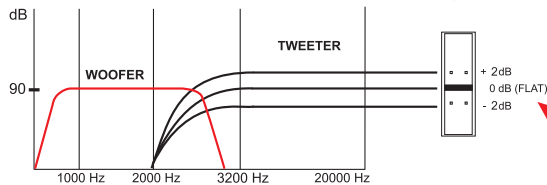
ACTIVE SET UP



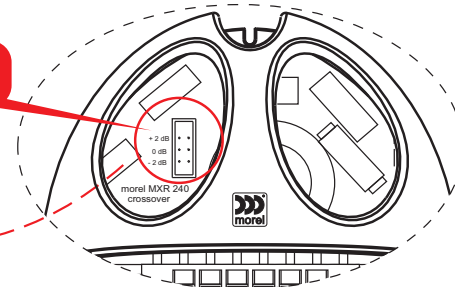
ACTIVE SET UP



MXR240 / MXR250i CROSSOVER TWEETER ALIGNMENT



Use the jumper to determine the tweeter +/- dB level



SPECIFICATIONS

DRIVE UNIT	HYBRID MW4	HYBRID MW5	HYBRID MW6	HYBRID INTEGRA 4	HYBRID INTEGRA 5	HYBRID INTEGRA 6
Nominal Impedance (Ohms)	4	4	4	4	4	4
Power Handling Wrms	100	120	140	80	90	100
Max. Trans,Pwr Handling Wrms	300	500	600	250	250	300
Sensitivity (2.83V/1M)	89 dB	90dB	91 dB	89dB	90dB	91dB
Frequency Response Hz	50-4200	45-3000	35-3000	80-5000	70-3800	65-3300
Resonant Freq. Fs Hz	82	56	45	92	82	75
Voice Coil Diameter mm (inch)	54 (2.1)	54 (2.1)	54 (2.1)	54 (2.10)	54 (2.1)	54 (2.1)
Voice Coil Height mm (inch)	10.50 (0.41)	10.50 (0.41)	11 (0.47)	-	-	12
Voice Coil Type/ Former	Aluminum	Aluminum	Aluminum	Aluminum	Aluminum	Aluminum
Voice Coil Wire	Hexatech™ aluminum	Hexatech™ aluminum	Hexatech™ aluminum	Hexatech™ aluminum	Hexatech™ aluminum	Hexatech™ aluminum
DC Resistance (Ohms)	3.2	3	3	3	3.3	3.3
Voice Coil Induct. @1 kHz (MH)	0.21	0.21	0.22	0.17	0.26	0.31
Magnet System	Hybrid rear vented	Hybrid rear vented	Hybrid rear vented	Neodymium	Neodymium	Neodymium
HE-Magnetic Gap Height mm (inch)	4 (0.16)	4 (0.16)	4 (0.16)	4 (0.16)	5 (0.20)	5 (0.20)
B-Flux Density (T.M.)	0.83	0.83	0.83	0.9	0.9	0.85
BL Product/BXL	4.16	4.2	4.2	3.97	5.16	4.65
Max. Linear Ex./Xmax mm (inch)	7±3.5 (0.28±0.14)	7±3.5 (0.28±0.14)	7±3.5 (0.28±0.14)	4±2 (0.16±0.08)	5.50±2.75 (0.22±0.11)	7±3.5 (0.28±0.14)
Suspension Compliance CMS - mm/VN	0.57	0.78	1.1	0.66	0.6	0.42
Electrical Q Factor QES	0.83	0.59	0.56	0.45	0.39	0.67
QTS	0.46	0.45	0.44	0.36	0.32	0.54
QMS	1.74	1.8	2.08	1.72	1.85	2.86
Mech.Resistance RMS - Ohm/meter	1.98	1.96	1.5	1.44	1.7	1.52
Moving Mass MMS - gr/ounce	6.8	9.9	11	4.4	6.11	8.12
Equip. Can Air Load VAS - L (cu,ft)	3.17 (0.11)	8.87 (0.31)	21 (0.74)	1.40 (0.04)	2.72 (0.37)	3.80 (0.13)
Effective Piston Area SD sq.cm (sq. inch)	64 (9.92)	90 (13.95)	119 (18.45)	39 (6.04)	57 (8.83)	80 (37.8)
Cone Type	One-piece formed	One-piece formed	One-piece formed	Formed Paper	Formed Paper	Formed Paper
Cone Material	DPC	DPC	DPC	Composite cellular fiber	Composite cellular fiber	Composite cell. fiber
Unit Diameter mm (inch)	104 (4)	135 (5.25)	165 (6.50)	104 (4.0)	135 (5.25)	165 (6.5)
Mounting Depth mm (inch)	50 (21)	60 (2.36)	61 (2.40)	50 (2.1)	60 (2.36)	61 (2.40)
Mounting Cutout mm (inch)	95 (3.74)	120 (4.72)	141 (5.55)	95 (3.74)	120 (4.72)	141 (5.55)
Net Weight Kg (lb)	0.53 (1.1716)	0.60 (1.32)	0.60 (1.32)	0.50 (1.10)	0.60 (1.32)	0.75 (1.65)

TWEETERS	MT230
Nominal Impedance (Ohm)	6
Power Handling (WRms)	130
Max Transient Power Handling W (10ms)	350
Sensitivity (2.83V/1M) dB	93
Frequency Response Hz	1600-25000
FS Hz	1200
Voice Coil Diameter mm (inch)	28 (1.125)
Voice Coil Former	Aluminum
Voice Coil Wire	Hexatech™ Aluminum
DC Resistance Ohm	5.2
Magnet System	Double Magnet Neodymium
Dome Type	Acutflex™ Hand Coated Soft Dome
Dome Material	Silk
Unit Diameter mm (inch)	45.00 (1.8)
Mounting Depth mm (inch)	20.00 (0.80)
Mounting Cutout mm (inch)	50.00 (2.00)
Net Weight Kg(lb)	0.067 (0.134)

CROSSOVERS	MXR240	MXR250i
Crossover Point	W: 2200Hz / 18dB T: 2200Hz / 12dB	2200Hz / 12dB/Oct
Crossover Controls	Tweeter+/- 2dB	Tweeter+/- 2dB
Wiring Options	N/A	N/A

* Morel operates a policy of continuous products design improvement, consequently specifications are subject to alteration without prior notice.

