



PHONES

0 (800) 800 130  
(050) 462 0 130  
(063) 462 0 130  
(067) 462 0 130

**130**  
COM.UA

Internet store of  
autogoods



SKYPE

km-130

CAR RECEIVERS — Receivers • Media receivers and stations • Native receivers • CD/DVD changers • FM-modulators/USB adapters • Flash memory • Facia plates and adapters • Antennas • Accessories |  
CAR AUDIO — Car audio speakers • Amplifiers • Subwoofers • Processors • Crossovers • Headphones • Accessories | TRIP COMPUTERS — Universal computers • Model computers • Accessories |  
GPS NAVIGATORS — Portable GPS • Built-in GPS • GPS modules • GPS trackers • Antennas for GPS navigators • Accessories | VIDEO — DVR • TV sets and monitors • Car TV tuners • Cameras • Videomodules • Transcoders • Car TV antennas • Accessories | SECURITY SYSTEMS — Car alarms • Bike alarms • Mechanical blockers • Immobilizers • Sensors • Accessories | OPTIC AND LIGHT — Xenon • Bixenon • Lamps • LED • Stroboscopes • Optic and Headlights • Washers • Light, rain sensors • Accessories | PARKTRONICS AND MIRRORS — Rear parktronic • Front parktronic • Combined parktronic • Rear-view mirrors • Accessories | HEATING AND COOLING — Seat heaters • Mirrors heaters • Screen-wipers heaters • Engine heaters • Auto-refrigerators • Air conditioning units • Accessories | TUNING — Vibro-isolation • Noise-isolation • Tint films • Accessories | ACCESSORIES — Radar-detectors • Handsfree, Bluetooth • Windowlifters • Compressors • Beeps, loudspeakers • Measuring instruments • Cleaners • Carsits • Miscellaneous | MOUNTING — Installation kits • Upholstery • Grilles • Tubes • Cable and wire • Tools • Miscellaneous | POWER — Batteries • Converters • Start-charging equipment • Capacitors • Accessories | MARINE AUDIO AND ELECTRONICS — Marine receivers • Marine audio speakers • Marine subwoofers • Marine amplifiers • Accessories | CAR CARE PRODUCTS — Additives • Washer fluid • Care accessories • Car polish • Flavors • Adhesives and sealants | LIQUID AND OIL — Motor oil • Transmission oil • Brake fluid • Antifreeze • Technical lubricant



In store "130" you can find and buy almost all necessary goods for your auto in Kyiv and other cities, delivery by ground and postal services. Our experienced consultants will provide you with exhaustive information and help you to chose the very particular thing. We are waiting for you at the address

<https://130.com.ua>



## User's Manual

### 738UA MP3- COMPATIBLE IN-DASH CD RECEIVER WITH FRONT PANEL AUX INPUT AND USB PORT



**738UA**  
MP3- COMPATIBLE IN-DASH CD RECEIVER WITH  
FRONT PANEL USB PORT AND AUX INPUT

01.2011

tech support: [www.bossaudio.com/support](http://www.bossaudio.com/support)



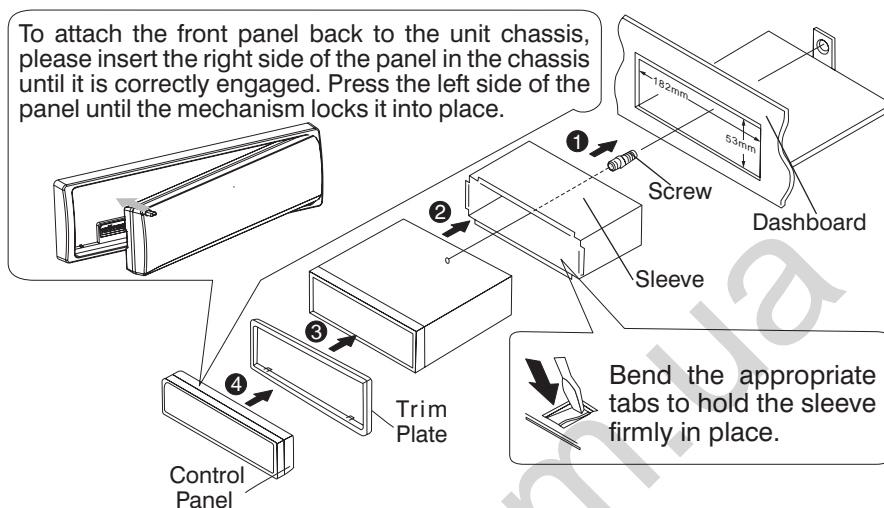
**BOSS®**  
AUDIO SYSTEMS

BOSS Audio Systems • 3451 Lunar Court • Oxnard, CA 93030  
[www.bossaudio.com](http://www.bossaudio.com)  
800.999.1236

**BOSS®**  
AUDIO SYSTEMS

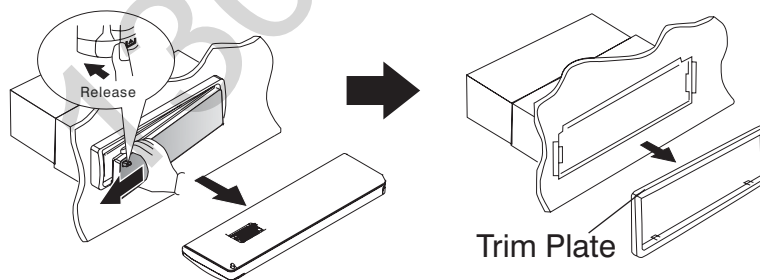
## 1. INSTALLATION

The following illustration shows a typical installation. If you have any questions or require information regarding installation kits, consult your customer car audio dealer or a company supplying kits. If you are not sure how to install this unit correctly, have it installed by a qualified technician.

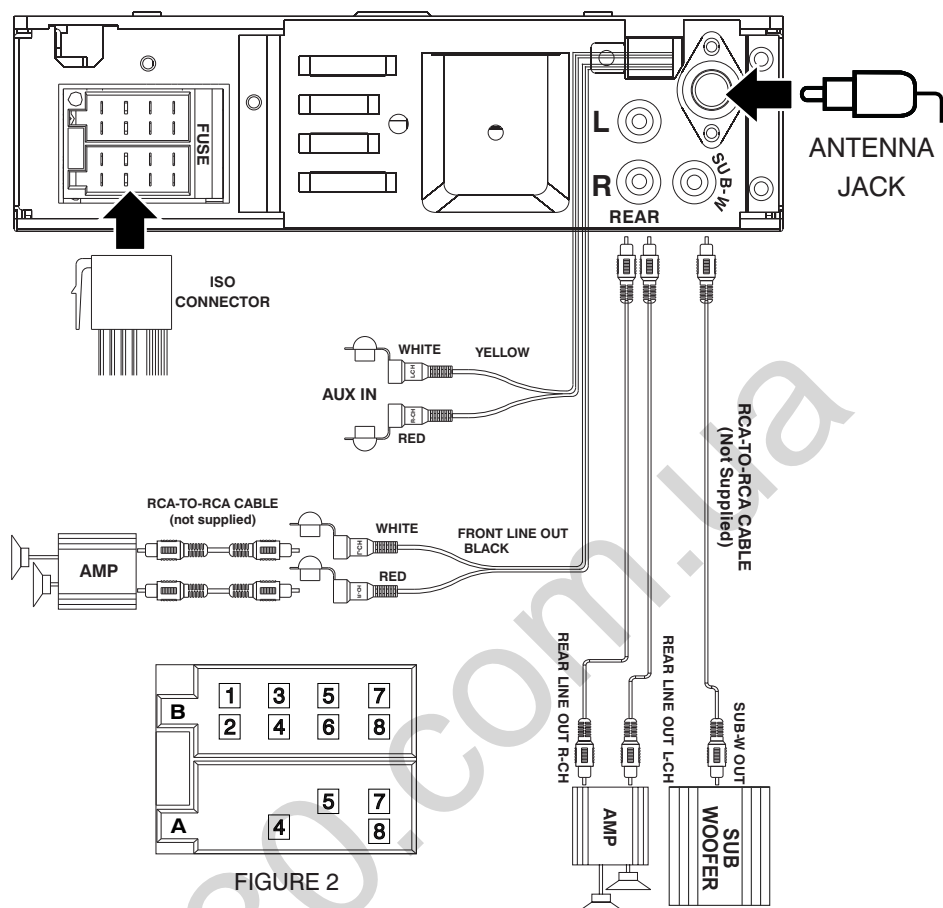


### Remove the unit

1. Press the Panel Release button.
2. Push the left side of the panel rightward
3. Pull the panel towards you to disengage it from the chassis.



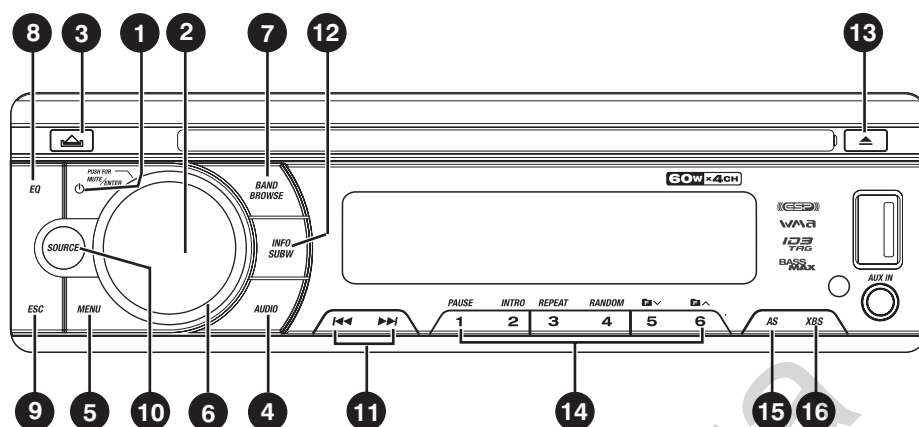
## 2. CONNECTING THE SYSTEM



ISO CONNECTOR WIRING CHART

PIN	WIRE COLOR	FUNCTION/LABEL
A4	YELLOW	BATTERY(+)
A5	BLUE	CONNECT TO SYSTEM CONTROL TERMINAL OF THE POWER AMP OR AUTO ANTENNA RELAY CONTROL TERMINAL(max 150mA 12VDC)
A7	RED	IGNITION(ACC)
A8	BLACK	GROUND
B1	VIOLET	RIGHT REAR SPEAKER (+)
B2	VIOLET/BLACK	RIGHT REAR SPEAKER (-)
B3	GREY	RIGHT FRONT SPEAKER (+)
B4	GREY/BLACK	RIGHT FRONT SPEAKER (-)
B5	WHITE	LEFT FRONT SPEAKER (+)
B6	WHITE/BLACK	LEFT FRONT SPEAKER (-)
B7	GREEN	LEFT REAR SPEAKER (+)
B8	GREEN/BLACK	LEFT REAR SPEAKER (-)

### 3. THE MAJOR FUNCTION OF THIS UNIT



No.	Item	Decriptions
1	(Power)	► Press this button or any other button on the front panel (except Release/Eject) to turn the unit on. Press this button again to turn the unit off.
2	MUTE	► Press this button to turn the Mute On/Off.
	ENTER	► Under Disc/USB/SD media playback mode, press this button to confirm the selection.
3	(Release)	► Press this button to open the control panel.
4	AUDIO(Audio Menu)	► Press this button is access into the Audio Menu mode: <b>VOL-&gt;BAS-&gt;TRB-&gt;BAL-&gt;FAD.</b>
5	MENU(System Menu)	► Press this button access into the System Menu.
6	VOLUME KNOB	► Rotate the encoder volume to increase and decrease the volume.
	BAND	► Short press this button to change between BAND FM1,FM2,FM3, AM1(MW1) or AM2 (MW2).
7	BROWSE	► Under Disc/USB/SD media playback mode, short press this button to access into the Music Folder/ File searching mode. Rotate the encoder knob to navigate thru Folder and File list. Once the desire file appearing on the LCD, press the ENTER button to confirm and start file play.
8	EQ	► Press this button to select the preset Equalizer setting: <b>FLAT -&gt; POP -&gt; ROCK-&gt;CLASSIC-&gt; EQ OFF</b>
9	ESC	► Press this button to quick return previous menu or mode.
10	SOURCE	► Press SOURCE button to select a different mode of playback mode: Radio, CD play,USB,SD and Aux In.



11

TUNE UP /DOWN

Under tuner mode, press this button to enter into the Auto Seek mode, press and hold this button to enter into the Manual Seek mode.

12

FILE UP /DOWN

Under Disc/USB/SD media playback mode, press these buttons to skip a song / file.

FAST FORWARD /BACKWARD

Under Disc/USB/SD media playback mode, press and hold momentarily to fast forward/backward.

13

INFO

Under Tuner mode, press this button briefly to display the Clock time.

Under Disc/USB/SD media playback mode, press this button repeatedly to display ID3 information: Track number and play time ->folder ->file ->title ->artist ->album ->clock.

SUBW(Subwoofer)

Press and hold this button to turn On / Off the Subwoofer function.

14

EJECT

Press this button to eject the Disc.

PRESET NUMERIC BUTTONS

Under Tuner mode, short press the Numeric buttons to recall the preset stations. Hold press the Numeric buttons to store the listening station.

Under Disc/USB/SD media playback mode,press the Numeric buttons to perform the below operation:

No.	1	2	3	4	5	6
Short press	Pause/Play	Intro	Repeat	Random	Folder Down	Folder UP
Long press		Folder Intro	Folder Repeat	Folder Random		

15

AS (Auto Store)

Long press this button to automatically select six strongest stations and store them in current band.

16

XBS

Press this button to turn On / Off the iX-BASS booster function.

## 4. ADJUST SYSTEM MENU SETTING

Press MENU button to access into the System Menu. User can select the below functions:

### ► **AREA (Tuner Frequency Spacing)**

This option allows the selection of the frequency spacing appropriate for your area. "AREA U.S.A" is the default setting. Rotate the Encoder Volume Knob to select the EUROPE, U.S.A, OIRT (Russia), LATIN, ASIA (Asia Pacific) or MID-EAST (Middle East) options.

### ► **TIME SET (CLK)**

The time on the clock is set to "12:00" by default, Rotate the encoder volume knob to adjust the minutes and hours. Press MENU button to select the hour or minutes.

### ► **BEEP ON/OFF (Beep Tone)**

The beep tone feature allows the selection of an audible beep tone to be heard each time a button is pressed on the face of the radio. "Beep On" is the default display. Rotate Encoder Volume Knob to select the "Beep Off" option.

### ► **LOC ON/OFF (Local/Distance Select)**

This feature is used to designate the strength of the signals at which the radio will stop during automatic tuning. "LOC OFF" is the default, allowing the radio to stop at a broader range of signals. To set the unit to select only strong local stations during automatic tuning, rotate the Encoder Volume Knob until "LOC ON" appears in the display.

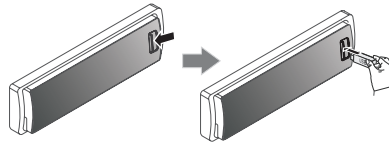
## 5. EXTERNAL CONNECTION AND MEDIA PLAYER

MP3 music files are audio compression format. This unit can play MP3 directly from files contained on a USB Memory Stick, SD Card.

### USB DEVICE OPERATION

#### ▶ Insert the USB Device

1. Open the cover marked  on the front panel.
2. Insert the USB device into the USB socket. The unit starts playing from the USB device automatically.



### NOTE


Ensure that the USB device contains playable music.

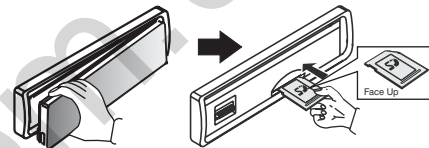
#### ▶ Remove the USB Device

Before remove the USB stick from the front panel. Always remember to switch off the unit's power then remove out the USB Stick.

### MEMORY CARD OPERATION

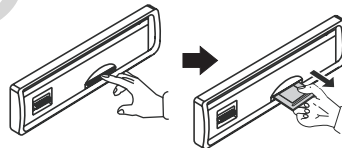
#### ▶ Insert the Memory Card

1. Press panel  button to release the front panel.
2. Push the left side of the panel rightward. Pull the panel towards you to disengage it from the chassis.
3. Insert the card into the card slot in the correct direction until a "CLICK" sound is heard.
4. Close the front panel, then the unit starts playing from the card automatically.



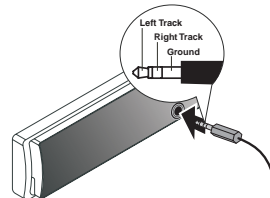
#### ▶ Remove Memory Card

Press the unit in off. Press the card until you hear a click sound, the card is now disengaged. then remove the card.



### CONNECT THE AUX-IN

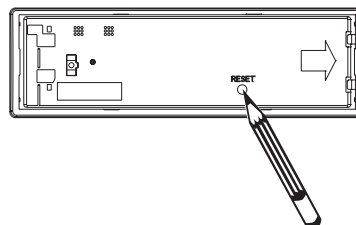
Connect the external signal to AUX in jack located at the front of the panel, then press Mode button to select Aux mode. Press Mode Button again to cancel Aux Mode and return to previous mode.



### RESET THE UNIT

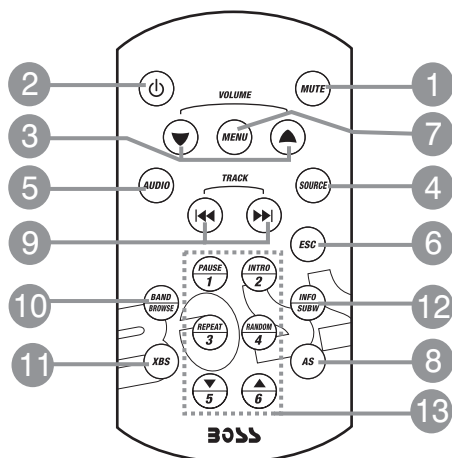
You can reset the unit to its default setting.

- The RESET button is located on the main unit (as shown on the diagram). To press it vertically with a ballpoint pen or metal object will activate it.
- The reset button is to be activated for the following reasons:
  1. Initial installation of the unit when all wiring is completed.
  2. All the function buttons do not operate.
  3. Error symbol on the display.





## 6. THE FUNCTIONS OF REMOTE CONTROL



No.	Button	Item	Decriptions
1		<b>MUTE</b>	▶ Press this button to turn the mute On/Off.
2		<b>POWER ON/OFF</b>	▶ When the unit is power on, press this button to turn Off the unit. Once the unit power off, press this button to turn On the unit.
3		<b>VOLUME KNOB</b>	▶ Press this button to increase / decrease the volume.
4		<b>SOURCE</b>	▶ Press this button to select different source playback mode: RADIO,CD PLAY, TUNER, AUX IN.
5		<b>AUDIO MENU</b>	▶ Press this button to enter into the Audio Menu mode.
6		<b>ESC</b>	▶ Press this button to quick return previous menu or mode.
7		<b>SYSTEM MENU</b>	▶ Press this button to enter into the System Menu mode.
8		<b>AUTO STORE</b>	▶ Press this button to automatically select six strongest stations and store them in current band.
9		<b>TUNE UP / DOWN</b>	▶ Under the tuner mode, press this button to enter into the Auto seek mode, press and hold this button to enter into the Manual Seek mode.
		<b>FILE UP / DOWN</b>	▶ Under Disc media playback mode, press these buttons to skip to the next or previous song / file.
		<b>FAST FORWARD /BACKWARD</b>	▶ Under Disc/USB/SD media playback mode, press and hold momentarily to fast forward / backward.

**BAND**

▶ Press this button to change between BAND FM1,FM2,FM3, AM1 (MW1) or AM2 (Mw2).

**BROWSE**

▶ Under the Disc/USB/SD media playback mode, short press this button is access into the Music Folder/File searching mode. Rotate the encoder knob to navigate thru Folder and File list. Once the desire file appearing on the LCD. Press 'MENU' button to confirm and start file play.

**XBS**

▶ Press this button to turn On/Off the iX-BASS booster function.

**INFO**

▶ Under Tuner mode, press this button briefly to display the Clock time.

▶ Under Disc / USB / SD media playback mode, press this button repeatedly to display ID3 information: Track number and play time -> folder ->file ->title ->artist ->album ->clock.

**SUBW  
(Subwoofer)**

▶ Press and hold this button to turn On / Off the Subwoofer function.

**PRESET  
NUMERIC  
BUTTONS**

▶ Under Tuner mode, short press the Numeric buttons to recall the preset stations. Hold press the Numeric buttons to store the listening station.

▶ Under Disc media playback mode, press the Numeric buttons to perform the below operation:

No.	1	2	3	4	5	6
Short press	Pause/Play	Intro	Repeat	Random	Folder Down	Folder UP
Long press		Folder Intro	Folder Repeat	Folder Random		

## 7. TROUBLE SHOOTING

Before going through the check list, check wiring connection. If any of the problems persist after check list has been made, consult your nearest service dealer.

### No power or no sound

- Car engine is not on. Turn the car engine on.
- Cable is not correctly connected. Check connections.
- Fuse is burnt. Replace fuse.
- Volume is in minimum. Adjust volume to a desired level.
- If the above solutions cannot help, press the RESET button.
- Ensure that the track played is of a compatible format.

### Noise in broadcasts

- Signals are too weak. Select other stations with stronger signals.
- Check the connection of the car antenna.
- Change broadcast from Stereo to mono.

### Cannot play disc

- Ensure that the disc label is inserted with the printed side facing up.
- Wipe the disc with fibre cleaning cloth from the centre to the edge in a straight line.
- This disc may be defective. Play another disc.
- Ensure that the CD is a finalised CD/CD-R/CD-RW.
- Ensure that the CD is not encoded with copyright protection technologies.

### The CD Skips tracks

- Ensure that the CD is not damaged or dirty.
- Ensure that random mode is deactivated.

### Preset stations lost

- Battery cable is not correctly connected. Connect the battery cable to the terminal that is always live.

## 8. PRODUCT INFORMATION

Power Supply	12 V DC (11-14 V), Negative Ground
Fuse	7.5A
Suitable Speaker Impedance	4 - 8Ω
Power output	60W x 4 channels
Pre-AMP output voltage	2.0 V (USB play mode; 1KHZ, 0dB, 10kΩ load)
Aux-In level	≥ 300mV

### Radio

#### -FM

Frequency Range	87.5 - 107.9MHz(American) 87.5 - 108MHz(Europe) (100KHz per step in auto search and 50KHz per step in manual search)
Usable Sensitivity	Better than 15dB at S/N 30dB

#### -AM(MW)

Frequency Range	530 - 1710 KHz(American) 522 -1620KHz(Europe)
Usable Sensitivity	Better than 45dB

### Supported formats:

MPEG1/2/2.5/	Layer 2/3
WMA Version	7/8/9
Sampling frequency	
MPEG1	32/44.1/48 Khz
MPEG2	16/22.05/24 KHz
MPEG2.5	8/11.025/12KHz
WMA	22/32/44/48KHz
Sampling But rate	
MP3/WMA	32~320Kbps & VBR
CDROM Mode	1 / 2
ISO9660 Level	1 / 2 & Joliet(unicode)
Max File/DIR. Count	999
Max DIR. Depth	255
Sorting Method	Tree sorting
Max File/DIR. Name	64Byte
ID3	V1.0/1.1/2.0/2.3(Max 32Byte)
MP3 directory shown	in this manual as "Directory"
MP3 file shown	"Track".
Maximum length of file name	31 characters.
Maximum length of directory	32 characters.
Supports Multi-Session recording.	
Supports CD, CDR and CDRW.	
Disc written by Packet Write (UDF) is not supported.	

#### NOTE

Product information is subject to change without prior notice.



If at any time in the future you should need to dispose of this product please note that Waste electrical products should not be disposed of with household waste. Please recycle where facilities exist. Check with your Local Authority or retailer for recycling advice.(Waste Electrical and Electronic Equipment Directive)