



PHONES

0 (800) 800 130  
(050) 462 0 130  
(063) 462 0 130  
(067) 462 0 130

130  
COM.UA

Internet store of  
autogoods



SKYPE

km-130

CAR RECEIVERS — Receivers • Media receivers and stations • Native receivers • CD/DVD changers • FM-modulators/USB adapters • Flash memory • Facia plates and adapters • Antennas • Accessories |  
CAR AUDIO — Car audio speakers • Amplifiers • Subwoofers • Processors • Crossovers • Headphones • Accessories | TRIP COMPUTERS — Universal computers • Model computers • Accessories |  
GPS NAVIGATORS — Portable GPS • Built-in GPS • GPS modules • GPS trackers • Antennas for GPS navigators • Accessories | VIDEO — DVR • TV sets and monitors • Car TV tuners • Cameras • Videomodules  
• Transcoders • Car TV antennas • Accessories | SECURITY SYSTEMS — Car alarms • Bike alarms • Mechanical blockers • Immobilizers • Sensors • Accessories | OPTIC AND LIGHT — Xenon • Bixenon • Lamps  
• LED • Stroboscopes • Optic and Headlights • Washers • Light, rain sensors • Accessories | PARKTRONICS AND MIRRORS — Rear parktronic • Front parktronic • Combined parktronic • Rear-view mirrors  
• Accessories | HEATING AND COOLING — Seat heaters • Mirrors heaters • Screen-wipers heaters • Engine heaters • Auto-refrigerators • Air conditioning units • Accessories | TUNING — Vibro-isolation  
• Noise-isolation • Tint films • Accessories | ACCESSORIES — Radar-detectors • Handsfree, Bluetooth • Windowlifters • Compressors • Beeps, loudspeakers • Measuring instruments • Cleaners • Car seats  
• Miscellaneous | MOUNTING — Installation kits • Upholstery • Grilles • Tubes • Cable and wire • Tools • Miscellaneous | POWER — Batteries • Converters • Start-charging equipment • Capacitors  
• Accessories | MARINE AUDIO AND ELECTRONICS — Marine receivers • Marine audio speakers • Marine subwoofers • Marine amplifiers • Accessories | CAR CARE PRODUCTS — Additives • Washer fluid •  
Care accessories • Car polish • Flavors • Adhesives and sealants | LIQUID AND OIL — Motor oil • Transmission oil • Brake fluid • Antifreeze • Technical lubricant



In store "130" you can find and buy almost all necessary goods for your auto in Kyiv and other cities, delivery by ground and postal services. Our experienced consultants will provide you with exhaustive information and help you to chose the very particular thing. We are waiting for you at the address

<https://130.com.ua>

 **BLAUPUNKT**

DIGITAL VIDEO RECORDER  
**BP2.1 FHD**

ESTABLISHED  
IN  
GERMANY  
Since 1923

Full HD  
1080



*Enjoy it.*

130.com.ua

## CAUTIONS

---

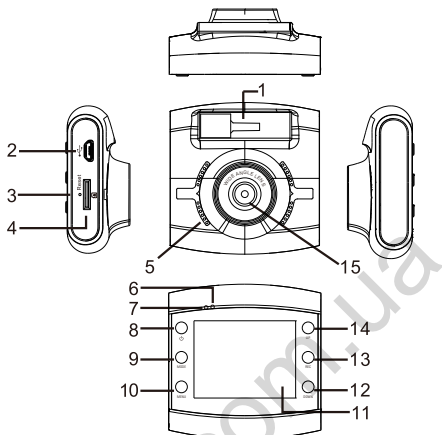
- Please insert the micro SD card in the right direction to avoid damage to the card or the device. If device shows error message, please format the micro SD card from device menu. Please reset device or change micro SD card if similar error continues.  
Note : All files will be deleted when formatting micro SD card, please backup the important files before format. When reset function is selected, the settings will return to default setting.
- Recommended micro SD : CLASS 10 or above micro SD card. Micro SD card specification varies from one brand to another, which may not function as expected when using with device. Please test for micro SD compatibility before purchasing micro SD.
- Micro SD card must be formatted before using with the device. Backup recording files once a week to avoid files from being overwritten. Please format micro SD card once every month for recording stability.
- Ensure bracket is installed correctly & firmly on windscreen to avoid damage to device and for better recording angle.
- Please do not use product under wet environment as device is not waterproofed/ water resistant.
- Please do not record or take picture facing sunlight.
- To obtain clear image, please clean windscreen and device lens regularly. Avoid using device in dusty environment.
- Blaupunkt is not liable/responsible for non-recorded event, missing files, etc.
- Handle device with care and avoid direct impact on the device. Avoid using device in high electromagnetic environment.
- Operating temperature of the device is -10°C ~ 50°C, storage temperature is -20°C ~ 70°C. Continuous exposure to sunlight, especially when locked in cabin where temperature exceeds 70°C may result to device malfunction, colour change, housing and image distortion.

### Disclaimer :

- In no event shall Blaupunkt be liable for any direct, indirect, punitive, incidental, special consequential damages, to property or life, improper storage, whatsoever arising out of or connected with the use or misuse of our products.
- **USA & CANADA** : Product not intended for sale in the United States and Canada. If purchased in the U.S. or Canada, this product is purchases as-is. No warranty, express or implied is provided in the U.S. and Canada.
- This device is NOT intended to be used for illegal purpose; surveillance and shall not be used in any form as evidence for claim purposes.
- Some countries prohibit drivers from mounting anything on the windshield, or restrict mounting to specific areas of the windshield. It is the owner's responsibility to mount the device in compliance with local laws.
- Error may occur depending on the surrounding environment and the voltage of the car.

## STRUCTURE

---



- |                       |                              |              |
|-----------------------|------------------------------|--------------|
| 1. Bracket hole       | 6. Recording indicator light | 7. LCD       |
| 2. USB port           | 7. Power indicator light     | 12. DOWN key |
| 3. RESET key          | 8. ON/OFF key                | 13. REC key  |
| 4. Micro SD card slot | 9. MODE key                  | 14. UP key   |
| 5. Speaker            | 10. MENU key (SOS)           | 15. Lens     |

### Features

1. Support HD video resolution
2. Built-in speaker/microphone.
3. Voice/Mute shortcut key
4. LCD off shortcut key
5. Support up to 32gb Micro SD card (not included).
6. Support seamless loop video recording.
7. Automatically turn on and record when car engine is turned on, automatically turn off with 5 seconds delay shutdown after car engine is turned off.
8. Support motion detection
9. Built-in G-sensor and support SOS function for manual emergency file lock to prevent important file from being overwritten.

## FUNCTION

### ON/OFF

#### Power on

- Press ON/OFF key to turn on the device or turn on car ignition. Recording indicator light of the device will be blinking green color light when recording.

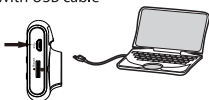
**Note :** Device will show "NO CARD" when micro SD card is not inserted. The device will automatically turn off if the micro SD card is inserted when the device is power is on.

#### Power off

- Press and hold to turn off the device manual or turn the car ignition off. The device will turn off after 5 seconds of delay shutdown when the car ignition is turned off.

### CHARGING

- With USB cable



- With car charger (recommended)



**Note :** Red power indicator light will turn on when charging.

### INSERT MICRO SD CARD

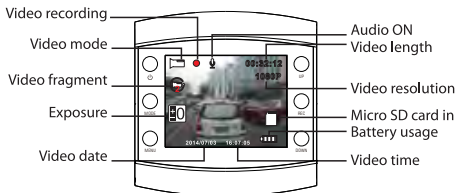
- Format SD card before use. Refer to device for SD card insertion direction. Clicking sound indicates completion of SD card insertion. Insert SD card before turning on the device.
- Gently push card further into the slot and let it pop-up in order to remove the card from the device.



### VIDEO OPERATION

Press ON/OFF to turn on device. Green indicator light blinks in video mode. Press REC to stop recording and save the last recording file. Green indicator light will light on without blinking when recording is stopped and will be in standby mode. Press REC again to start or stop recording.

- In standby mode, press ON/OFF to turn on/off the sound recording.
- In video recording mode, press UP to off the display screen or press UP again to turn on.
- In video standby mode, press MENU to go to Video Setting. Press MENU again to exit setting.



Autogoøds "130"

# FUNCTION

## PHOTO OPERATION

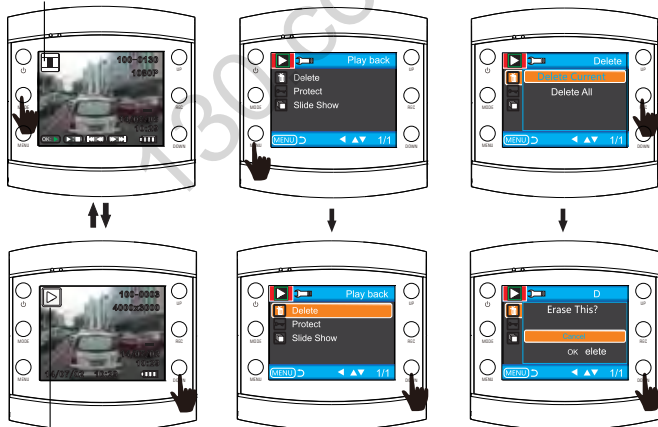
- In standby mode, press MODE key to switch to PHOTO mode. Press REC to take photos.
- In photo standby mode, press UP to off the display screen or press UP again to turn on.
- In photo standby mode, press MENU to go to Photo Setting. Press MENU again to exit setting.



## PLAYBACK & DELETE

- In standby mode, press MODE to switch to PLAYBACK mode. Press UP/DOWN to view video recording. Press REC to play or pause video playback.
- In playback standby mode, press MENU to go to delete options. Use UP/DOWN key to select operation and press REC to confirm operation selections. Press MENU again to exit operation.

### Video Preview

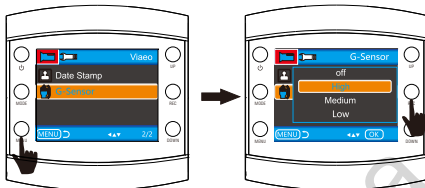


### Photo Preview

## FUNCTION

### G-SENSOR

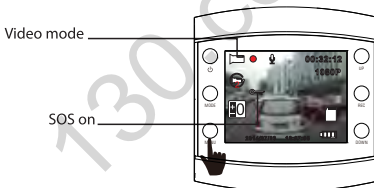
In video recording mode, G-sensor will be activated and prompt device's system to save file as emergency if impact/force against the vehicle is detected. This will prevent the file from being overwritten. This auto function comes with selection of force/gravity detection level for different user preferences. Select the sensitivity at Video Setting.



### SOS

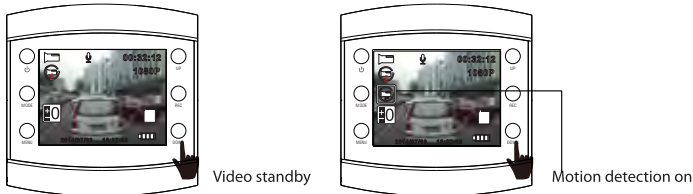
In video recording mode, press MENU to manually save file as emergency instead of waiting for G-sensor to automatically prompt system to save file as emergency file upon detecting force/gravity. Saving file as emergency file will also prevent file from being overwritten.

**Note :** After pressing MENU/SOS in the first 10 seconds of the loop recording clip, the current and previous loop recording clip are saved. If SOS is selected during the last 10 seconds of the loop recording clip, the current and the next loop recording clip will be saved. If SOS is selected in the middle of the loop recording clip, the current loop recording clip will be saved.



### MOTION DETECTION

In video standby mode, press DOWN as shortcut key to turn on/off motion detection. Device will start recoding when it detects moving objects. Device will stop recording and switch back to video standby mode if no motion is detected after 5 second of recording.





## FUNCTION

### System setup

At any standby mode, press MENU twice to enter into SETUP. Press UP/DOWN to select option, press REC to confirm option selection.

Mode	Category	Sub-category	Remark
Video	Resolution	1080FHD - 1920x1080 1080P 1440 x 1080P 720P - 1280x720 WVGA - 848x480"	Factory default : 1440 x 1080P
	Loop Recording	Off/30sec/1 min/2 min	Factory default: 1 Minutes
	Exposure	+2.0, +5/3, +4/3, +1.0, +2/3, +1/3, +0.0, -1/3, -2/3, -1.0, -4/3, -5/3, -2.0	Factory default: +0.0
	Record Audio	Off/On	Factory default: On
	G-sensor	Off/Low/Medium/High	Factory default: medium
	Data Stamp	Off/On	Factory default: On
Photo/Still	Capture Mode	Single/2s Timer/5s Timer/10s timer	Factory default : Single
	Resolution	12M/10M/8M/5M/3M/2MHD/VGA/1.3M	Factory default : 8M
	Sequence	Off/On	Factory default : Off
	Quality	Fine/Normal/Economy	Factory default : Normal
	Sharpness	Strong/Normal/Soft	Factory default : Normal
	White Balance	Auto/Daylight/Cloudy/Tungsten/ Fluorescent	Factory default : Auto
	Color	Color/Black & White/Sepia	Factory default : Color
	ISO	Auto/100/200/400	Factory default : Auto
	Exposure	+2.0, +5/3, +4/3, +1.0, +2/3, +1/3, 0, -1/3, -2/3, -1.0, -4/3, -5/3, -2.0	Factory default : 0
	Anti-Shaking	Off/On	Factory default : Off
	Quick Review	Off/2 Seconds/5 Seconds	Factory default : Off
	Date Stamp	Off/Date/Date & Time	Factory default : Date/Time
Playback	Delete	Delete Current/Delete All	
	Protect	Lock Current/Unlock Current/Lock All/ Unlock All	
	Slide Show	2 Seconds/5 Seconds/8 Seconds	Factory default : 2 Seconds
Setup	Date/Time	MM/DD/YY, DD/MM/YY, YY/MM/DD	
	Auto Power Off	Off/1 min/3 min	Factory default : Off
	Beep Sound	Off/On	Factory default: On
	Language	English , Français , Español , Português , Deutsch , Italiano , Român , 繁體中文 , Русский , 日本語 , Polski , čeština , Türk	Factory default : English
	Frequency	50Hz/60 Hz	Factory default : 50 Hz
	Format	Micro SD Card	
	LCD OFF	Off/1 min/2 min/5 min	Factory default : 1 min
	Default Setting	Cancel/OK	

## MASS STORAGE/PC CAMERA

---

### VIDEO & PHOTO DOWNLOAD

Device red power indicator light will light up when device is connected to the computer via USB cable. Once the device is connected to the computer, device's screen will prompt two options for usage selection, **Mass Storage** and **PC Camera**.

#### Mass Storage

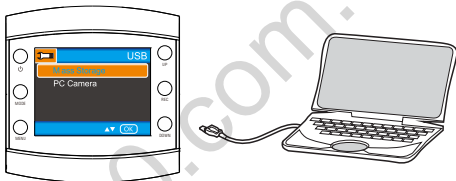
- Device will turn to blue screen when Mass Storage is selected. Device will allow computer to access into micro SD storage.

#### PC Camera

- Device will turn to blue screen when PC Camera is selected. Device is now connected as an external PC camera.

Press and hold ON/OFF to turn off Mass Storage or PC Camera connection to charge battery.

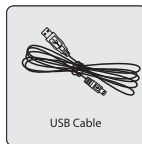
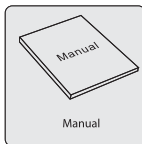
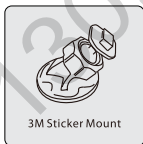
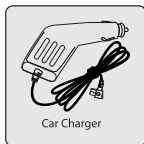
Note : Gently press on the RESET button with small sharp object to reset the device. Reset only when necessary.



## SPECIFICATIONS

Display	2" LCD Screen
CMOS sensor	1.0MP
Viewing angle	120° wide viewing angle
Minimum illumination	1LUX
Video resolution	1080P/720P/480P
Video format	AVI@MJPEG
Frame	1480P (30fps), 1080P (25fps), 720P (30fps)
Image resolution	12M/10M/8M/5M/3M/2MHD/VGA/1.3M
Image format	JPG
Motion detection	Support
Loop recording	Off/ 30sec/ 1 min/ 2 min
Memory card	Up to 32GB Micro SD (not included)
Output	USB2.0
Power port	USB5V 1000mA
Power frequency	50Hz/60Hz
Microphone/speaker	Built-in
Language	English , Français , Español , Português , Deutsch , Italiano , Român , 繁體中文 , Русский , 日本語 , Polski , čeština , Türk
Net weight	47g
Dimension	64(W)*65(H)*28(D)mm

## ACCESSORIES



\*Subject to change

130.com.ua

130.com.ua