



PHONES

(044) 338-0-130
 (050) 332-0-130
 (063) 577-0-130
 (067) 353-0-130

130
 COM.UA

Internet store of
 autogoods



SKYPE
 km-130

CAR RECEIVERS — Receivers • Media receivers and stations • Native receivers • CD/DVD changers • FM-modulators/USB adapters • Flash memory • Facia plates and adapters • Antennas • Accessories |
 CAR AUDIO — Car audio speakers • Amplifiers • Subwoofers • Processors • Crossovers • Headphones • Accessories | TRIP COMPUTERS — Universal computers • Model computers • Accessories |
 GPS NAVIGATORS — Portable GPS • Built-in GPS • GPS modules • GPS trackers • Antennas for GPS navigators • Accessories | VIDEO — DVR • TV sets and monitors • Car TV tuners • Cameras • Videomodules
 • Transcoders • Car TV antennas • Accessories | SECURITY SYSTEMS — Car alarms • Bike alarms • Mechanical blockers • Immobilizers • Sensors • Accessories | OPTIC AND LIGHT — Xenon • Bixenon • Lamps
 • LED • Stroboscopes • Optic and Headlights • Washers • Light, rain sensors • Accessories | PARKTRONICS AND MIRRORS — Rear parktronic • Front parktronic • Combined parktronic • Rear-view mirrors
 • Accessories | HEATING AND COOLING — Seat heaters • Mirrors heaters • Screen-wipers heaters • Engine heaters • Auto-refrigerators • Air conditioning units • Accessories | TUNING — Vibro-isolation
 • Noise-isolation • Tint films • Accessories | ACCESSORIES — Radar-detectors • Handsfree, Bluetooth • Windowlifters • Compressors • Beeps, loudspeakers • Measuring instruments • Cleaners • Carsits
 • Miscellaneous | MOUNTING — Installation kits • Upholstery • Grilles • Tubes • Cable and wire • Tools • Miscellaneous | POWER — Batteries • Converters • Start-charging equipment • Capacitors
 • Accessories | MARINE AUDIO AND ELECTRONICS — Marine receivers • Marine audio speakers • Marine subwoofers • Marine amplifiers • Accessories | CAR CARE PRODUCTS — Additives • Washer fluid •
 Care accessories • Car polish • Flavors • Adhesives and sealants | LIQUID AND OIL — Motor oil • Transmission oil • Brake fluid • Antifreeze • Technical lubricant



In store "130" you can find and buy almost all necessary goods for your auto in Kyiv and other cities, delivery by ground and postal services. Our experienced consultants will provide you with exhaustive information and help you to chose the very particular thing. We are waiting for you at the address

<http://130.com.ua>



HEYNER MOBIL AUTOMOTIVE GMBH
 Kurzer Weg 1-5
 D-15859 Storkow
 DEUTSCHLAND
 Telefon: +49 (0) 33678 68772
 Telefax: +49 (0) 33678 61044
 Internet: info@heyner-germany.de

Bedienungsanleitung

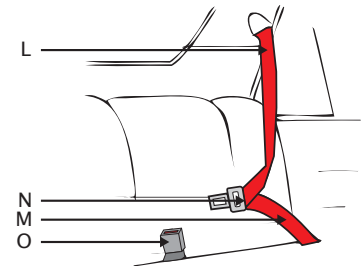
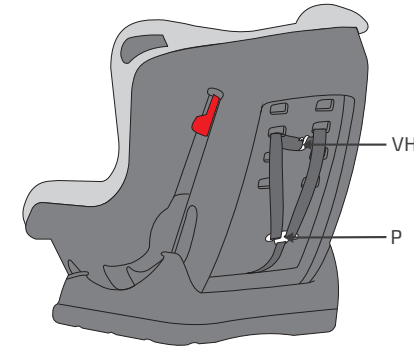
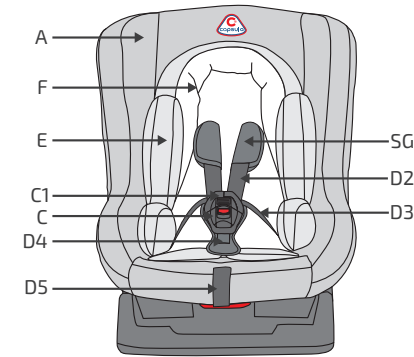
**capsula
mn1**



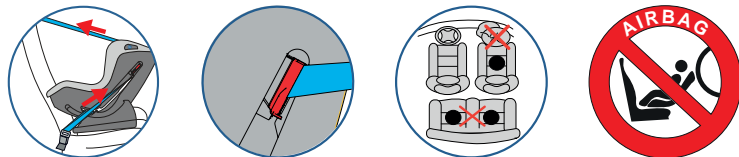
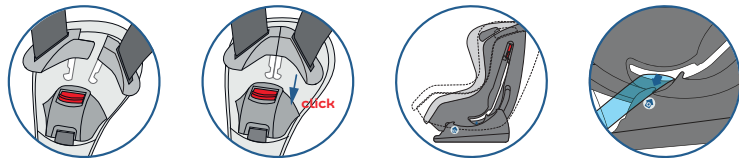
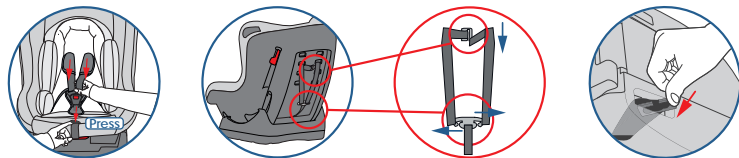
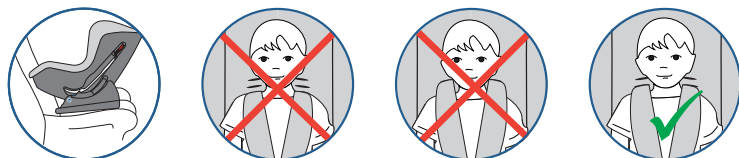
capsula.com



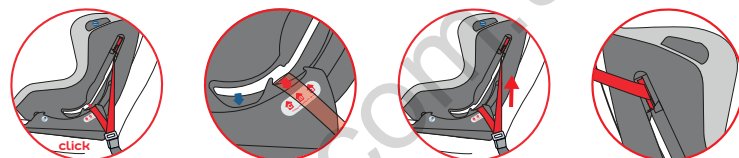
Ist eine Marke der alca mobil logistics + services gmbh, DEUTSCHLAND.
 Technische Änderungen vorbehalten.



Gr.0+ kg0-13 Rearward-facing



Gr.1 kg9-18 Forward-facing



Autogoods "130"

capsula
mn1



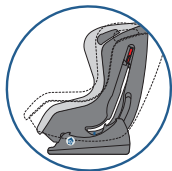
Bedienungsanleitung
Instruction Manual
Руководство по эксплуатации

D
GB
RUS

Inhaltsverzeichnis

1. Altersgruppe 0+ (Geburt - 13 kg Y)	S. 2
1.1 Verwendung des capsula® mn1 als Autokindersitz	S. 2
1.2 Anpassen des capsula® mn1 an die Kindesgröße	S. 3
1.3 Einbau des capsula® mn1 im Auto Rückwärtsgerichtet	S. 6
2. Altersgruppe I (9 kg - 18 kg Y)	S. 9
2.1 Verwendung des capsula® mn1 Vorwärtsgerichtet	S. 9
3. Pflegeanleitung	S. 11
4. Wichtige Hinweise	S. 12
5. Tipps	S. 14

A - Sitzbezug	L - Diagonalgurt des Auto-Dreipunktgurtes
B - Sitzteil	M - Beckengurt des Auto-Dreipunktgurtes
BT - Basisteil	N - Schlosszunge des Auto-Dreipunktgurtes
C - Gurtschloss	O - Gurtschloss des Auto-Dreipunktgurtes
C1 - Schlosszungen	P - Gurtanker
D - 5-Punkt-Gurtsystem	PG - Versteller für Liegeposition
D1 - Schultergurtdurchführung	S - Kurzbedieneranleitung
D2 - Schultergurte	SG - Schulterpolster
D3 - Hüftgurte	U - Gurtverlauf
D4 - Schrittgurt	VH - Verbindungshaken
D5 - Zentralverstellgurt	
E - Reduzierkissen	
F - Zusätzliches Wendekissen für Babies	
GK - Gurtklemme	
GV - Gurtversteller	



ATTENTION! ALWAYS USE THE 5-POINT SAFETY HARNESS, WHICH INCLUDES THE SHOULDER STRAPS AND THE CROTCH STRAP. FOR GROUP 0+ REAR-FACING ONLY USE THE BLUE ARROW MARKED POSITIONS FOR POSITIONS GO+ RECLINE POSITION.

Adjust the car seat into the position for group 0+ (marked with blue arrows). Do not use other recline positions for group 0+.



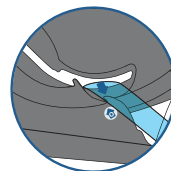
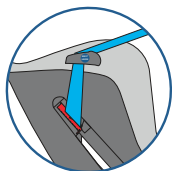
1.3.2 Placing it onto the vehicle seat

Put the seat shell (A) on to the car seat with its back to the driving direction («REBOARD»).

1.3.3 Installing and securing it onto the vehicle seat

Slide the Lap strap of the three-point safety belt through the side belt guides marked by a blue arrow on the right and left side of the seat shell (A) and fasten the vehicle's three-point belt with an audible «click» sound into the belt lock.

Make sure that the harness is secured by trying to pull it out of the buckle.



Tighten the belts again by pulling it towards the belt retracting system.

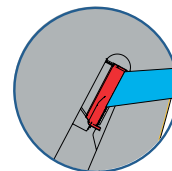
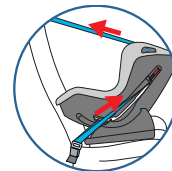
1.3.4 Tighten of the three-point safety belt

Press the **capsula® M11** as firm as possible into the padding of your vehicle seat. Firstly pull the harness close near the three-point safety belt buckle. Now pull up the diagonal strap (L) towards the roll up mechanism.

Unfold the red belt clip (GK) and place the diagonal strap inside it.

Put the child in the car seat. Check if the harness belt (D2) height is in correct position. Make sure the belts are not twisted and the seat fabric cover does not obstruct the movement or fit of the harness in any way.

To remove the car seat, repeat the described actions in reverse order.



2. Agegroup I (9 kg - 18 kg Y)

2.1 Usage capsula® M1 Front facing

ATTENTION! ALWAYS USE THE THREE-POINT SAFETY BELT OF THE CAR AND THE FIVE -POINT SAFETY BELT!

2.1.1. Placing it onto the vehicle seat

Place the car seat in the vehicle facing forward. Make sure that the back of the child seat is firmly pressed against the car seat's backrest.

Put the child in the car seat. Check if the shoulder straps (D2) height is in correct position. Make sure the belts are not twisted and the seat fabric cover does not obstruct the movement or fit of the harness in any way.

2.1.2. Securing it onto the vehicle seat

Thread the buckle tongues (C1) of the three-point safety belt of the car through the belt guide hook and clip it into the belt buckle of the three-point safety belt (O). Fasten the vehicle's three-point belt with an audible «click» sound into the belt lock.

Make sure that the belt is only run trough the red markings for the belt guides (labelled with red arrows) and is not jammed or twisted.

Warning: Do not use any other method of securing the child car seat as the one described here (belt guides labelled with red arrows). Respect the red markings for the belt guides. The lying position in group I must be placed only with in the areas A, B and C.

The belt buckle of the adult seat-belt must not come in the way of the weight distribution points (belt locks, etc.).

ATTENTION:

The belts must not be twisted or blocked. The belt anchorage (K) must not be blocked either. Please strictly follow the drawings and the installation instructions. In case of any doubt contact your dealer, importer or manufacturer.

2.1.3. Thighten of the three-point safety belt

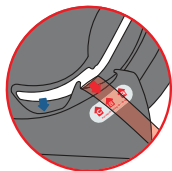
Press the capsula® M1 as firm as possible into the padding of your vehicle seat. Firstly pull the harness close near the three-point safety belt buckle. Now pull up the diagonal strap towards the roll up mechanism.

Unfold the red belt clip (GK) and place the diagonal strap inside it.

Put the child in the car seat. Check if the harness belt (D2) height is in correct position. Make sure the belts are not twisted and the seat fabric cover does not obstruct the movement or fit of the harness in any way. To remove the car seat, repeat the described actions in reverse order.



GB



3. Care Instructions

- To wash the seat cover, release the shoulder belts by pressing the seat belt adjuster (**GV**) and by pulling the shoulder harnesses (**D2**) towards you.

ATTENTION: Please do not spin. Do not dry in a dryer.

- Loosen the shoulder belts (**D2**) from the belt anchor (**P**) and the shoulder pad belts from the connecting hooks (**VH**) and pull out the ends of the belts in a forward direction. Then you can simply peel off all covers.
- Belts and locks must not be washed.
- The cover can be washed at 30°C or by hand and with a mild detergent. Please note the instructions of the washing label.
- Plastic parts can be cleaned with soapy water. Do not use any aggressive cleaning materials. Shoulder pads can be cleaned in lukewarm water with a mild detergent.

ATTENTION: Please do not spin. Do not dry in a dryer.

ATTENTION: When again covering **capsula® MN1**, make sure to fix the shoulder belts (**D2**) firmly correctly on the belt anchorage (**P**) and to fix the shoulder pad belts (**D2**) on the connecting hooks (**VH**). Assure that the belts are lying correctly. In case you feel unsure, take some photos **BEFORE** the dismantling of the parts.

4. Important notices

- **capsula® MN1** child seat is approved in accordance to the European standard for child restraint systems ECE R44/04. The test symbol as well as the permit number can be found on the orange label on the back of the seat.
- The approval loses its validity, if you make any changes on the seat. This could reduce the security or totally take it away. The **capsula®** must neither be used as seat nor as toy in the household. In case of any other use there is a danger of injury. Please take sufficient time to use the seat in your car, as it is described.
- This child seat can only be used in vehicles with three-point-vehicle-belts that are approved by the ECE regulation No. 16 or other comparable standards. It is strictly forbidden to install this seat with the lap belt alone.
- The belt straps of **capsula® MN1** must be fastened in a tight way and without being twisted.
- Using **capsula® MN1** for Group II+III, please guide the lap belt as close as possible to the lap of your child and keep the lap belt as tight as possible.
- It is not allowed to do any changes on the seat or the belts.
- Always secure **capsula® MN1** child seat with the vehicle's adult seat-belt, even if no child is sitting in.
- Make sure that all hard or plastic parts are stored away and cannot be lost.
- If you are not sure, consult your dealer, the manufacturer of the car seat or the recommended service shop.

- After an accident you should renew the whole seat or send it to the seller for a checkup - together with an accident report.
- The capsula child restraint systems can be used for many years. It is therefore possible that some parts are subject to wear and tear, for example the seat cover. They have to be replaced at some point.
- Only guide the belts along the red mark.
- The capsula® child restraint systems can be used for many years. It is therefore possible that some parts are subject to wear and tear, for example the seat cover. They have to be replaced at some point.
- Should the seat cover need to be replaced, only use capsula® seat covers.
- Always keep the instruction manual together with the child seat. In order to protect your child: Before each drive, check the right fixation of the seat.
- Never leave your child unattended in the child car seat of your vehicle.
- Slide the seat far enough forward, so that the feet of your child neither touch the backrest nor that they are jammed nor that they are twisted.
- As long as the seat is unused, protect your child car seat against intensive and direct sunlight. Especially the belt buckle can get unpleasantly hot.
- Always let your child get into or out of the car from the sidewalk
- Allow your child a break during longer car journeys.

ATTENTION: Never remove the belt buckle from the belt!

5. Some final hints:

- Do not place heavy objects on the hat rack. In case of an accident, these could become dangerous objects and can injure you and your child. Luggage and other similar objects should therefore be stored away properly and be well fixed.
- Make sure that all passengers in your vehicle have their seat-belt fastened, as unfastened passengers can become a big danger to children in case of an accident.
- Allow children breaks during long car journeys and make sure, they don't get out of the car alone without supervision.
- Always use the child safety lock system, if available in your car, to make it impossible for children to open the vehicle doors from the inside.
- Never leave your child unattended in or outside the car.