



PHONES

0 (800) 800 130
(050) 462 0 130
(063) 462 0 130
(067) 462 0 130

130
COM.UA

Internet store of
autogoods



SKYPE

km-130

CAR RECEIVERS — Receivers • Media receivers and stations • Native receivers • CD/DVD changers • FM-modulators/USB adapters • Flash memory • Facia plates and adapters • Antennas • Accessories |
CAR AUDIO — Car audio speakers • Amplifiers • Subwoofers • Processors • Crossovers • Headphones • Accessories | TRIP COMPUTERS — Universal computers • Model computers • Accessories |
GPS NAVIGATORS — Portable GPS • Built-in GPS • GPS modules • GPS trackers • Antennas for GPS navigators • Accessories | VIDEO — DVR • TV sets and monitors • Car TV tuners • Cameras • Videomodules
• Transcoders • Car TV antennas • Accessories | SECURITY SYSTEMS — Car alarms • Bike alarms • Mechanical blockers • Immobilizers • Sensors • Accessories | OPTIC AND LIGHT — Xenon • Bixenon • Lamps
• LED • Stroboscopes • Optic and Headlights • Washers • Light, rain sensors • Accessories | PARKTRONICS AND MIRRORS — Rear parktronic • Front parktronic • Combined parktronic • Rear-view mirrors
• Accessories | HEATING AND COOLING — Seat heaters • Mirrors heaters • Screen-wipers heaters • Engine heaters • Auto-refrigerators • Air conditioning units • Accessories | TUNING — Vibro-isolation
• Noise-isolation • Tint films • Accessories | ACCESSORIES — Radar-detectors • Handsfree, Bluetooth • Windowlifters • Compressors • Beeps, loudspeakers • Measuring instruments • Cleaners • Car seats
• Miscellaneous | MOUNTING — Installation kits • Upholstery • Grilles • Tubes • Cable and wire • Tools • Miscellaneous | POWER — Batteries • Converters • Start-charging equipment • Capacitors
• Accessories | MARINE AUDIO AND ELECTRONICS — Marine receivers • Marine audio speakers • Marine subwoofers • Marine amplifiers • Accessories | CAR CARE PRODUCTS — Additives • Washer fluid •
Care accessories • Car polish • Flavors • Adhesives and sealants | LIQUID AND OIL — Motor oil • Transmission oil • Brake fluid • Antifreeze • Technical lubricant

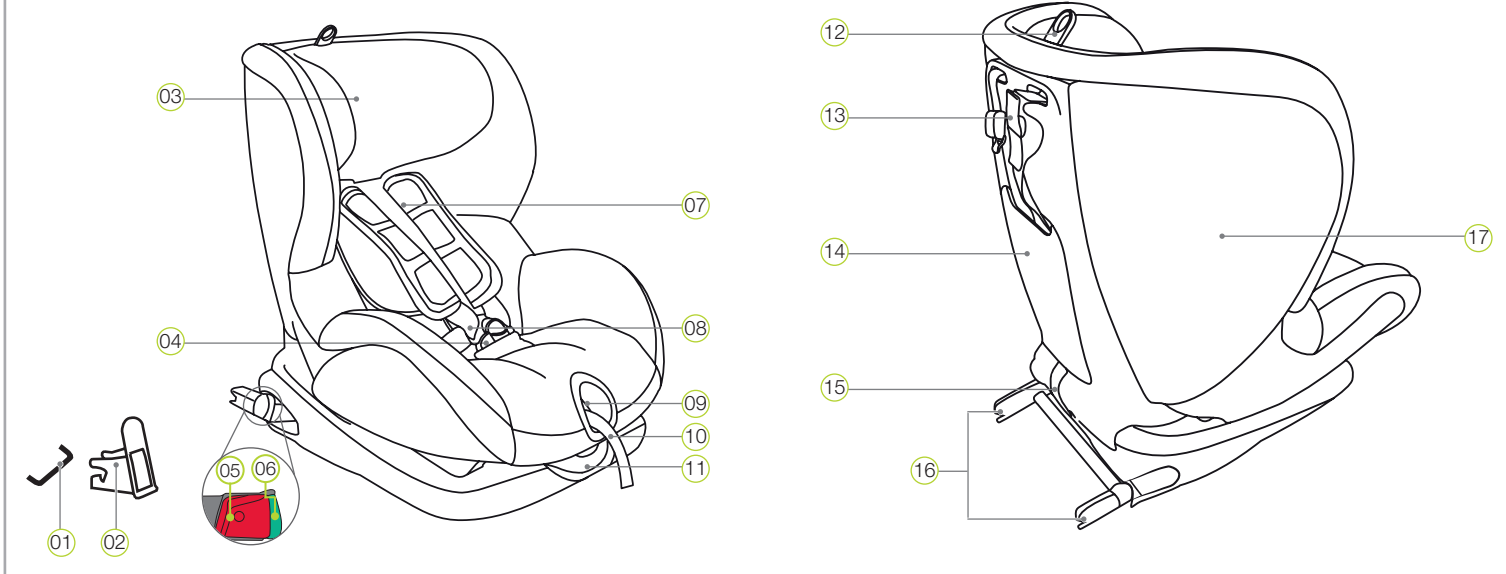


In store "130" you can find and buy almost all necessary goods for your auto in Kyiv and other cities, delivery by ground and postal services. Our experienced consultants will provide you with exhaustive information and help you to chose the very particular thing. We are waiting for you at the address

<https://130.com.ua>

1. PRODUCT OVERVIEW

We are pleased that you have chosen our TRIFIX² i-SIZE to accompany your child safely through a new stage of his or her life. In order to protect your child correctly, the TRIFIX² i-SIZE must always be used and installed as described in these instructions.



- 01 ISOFIX fastening points (car)
- 02 ISOFIX insertion aids
- 03 Headrest
- 04 Harness buckle
- 05 Release button
- 06 Safety button
- 07 Shoulder pads
- 08 Shoulder straps
- 09 Adjustment button
- 10 Adjustment belt
- 11 Tilt adjustment lever
- 12 Adjusting ring of the headrest
- 13 Top tether
- 14 Operating instructions compartment
- 15 Fabric loop
- 16 ISOFIX locking arms
- 17 Seat shell

4. CARE AND MAINTENANCE

Cleaning

Please only use authentic BRITAX RÖMER replacement seat covers. The seat cover is an integral part of the child safety seat and is key to ensuring the trouble-free functionality of the system. Replacement seat covers are available from your dealer.

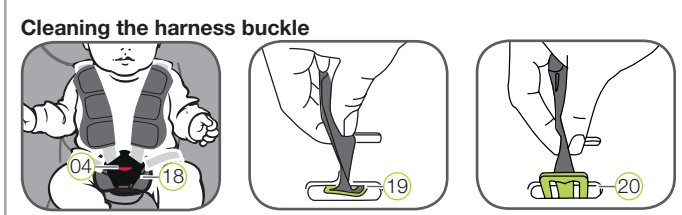
- The cover can be removed and washed with a mild detergent in the delicates programme of the washing machine (30°C). Please observe the instructions on the washing label of the cover.
- The shoulder pads can be removed and washed in luke-warm soapy water.
- The plastic parts and the harness can be cleaned with soapy water. Do not use any caustic cleaning agents (such as solvents).

Care for the harness buckle

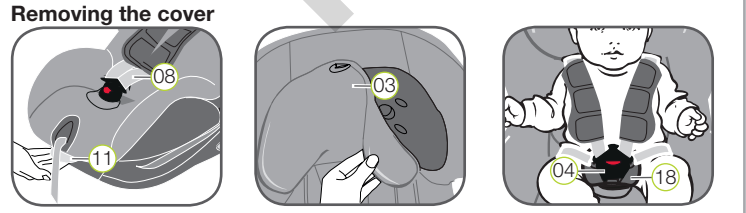
To ensure the safety of your child, it is absolutely essential that the harness buckle continues to function correctly. Harness buckle malfunctions are usually caused by a build-up of soiling or by external objects:

- When you press the red release button, it takes a long time for the buckle tongues to be ejected.
- The buckle tongues no longer engage (i.e. when you try to push them in, they pop out again).
- The buckle tongues engage without an audible "click".
- The buckle tongues are difficult to push in (you feel a certain amount of resistance).
- The buckle can only be opened by applying extreme force.

Remedy: Clean the harness buckle so that it functions properly again with no trouble:



- Open the harness buckle 04 (press the red release button).
 - Unhook the elastic seam of the cover from the bottom edge of the seat shell 17.
 - Open the Velcro fastener on the crotch pad 18 and pull it over the harness buckle 04 along with the cover.
 - Rotate the crotch harness with the metal plate 19 which holds the harness buckle 04 in the seat shell 17 by 90° in the longitudinal slot.
 - Slide the metal plate 19 through the harness slot 20 with the narrow edge facing forwards.
 - Soak the buckle 04 in warm water containing washing-up liquid for at least an hour. Rinse the buckle thoroughly and dry it.
 - Slide the metal plate 19 fully into the longitudinal slot from the front.
 - Rotate the crotch harness with the metal plate 19 by 90° until it is hooked into the harness slot 20 on the seat shell 17 perpendicular to the direction of motion.
- ⚠ DANGER!** Tug hard on the harness buckle 04 to make sure that it is secure in the seat shell 17.
- Thread the harness buckle 04 through the crotch pad 18 on the cover and then re-fasten the Velcro fastener and the cover.



- Removing the cover**
- Push the tilt adjustment lever 11 upwards and slide back the seat shell 17 to upright position.
 - Loosen the shoulder straps 08 as far as possible.
 - Open the harness buckle 04 (press the red release button).
 - Open the Velcro fastener on the crotch pad 18.
 - Slide the headrest 03 into the lowest position.
 - Pull off the cover of the headrest 03.
 - Open the snap fasteners on the left and right of the rear part of the cover.
 - Turn over the rear part of the cover onto the seat surface.
 - Thread the shoulder straps 08 through the recesses in the cover. Unhook the elastic seam of the cover from the bottom edge of the seat shell.
- ⓘ TIP:** Start with the handles on the side and top of the seat shell.

2. APPROVAL

These instructions use the following symbols stated below:

Symbol	Keyword	Explanation
⚠	DANGER!	Risk of severe personal injury
⚠	WARNUNG!	Risk of minor personal injury
⚠	CAUTION!	Risk of material damage
ⓘ	TIP:	Useful notes

The TRIFIX² i-SIZE is exclusively intended to secure your baby in your vehicle.

BRITAX RÖMER child safety seat	Tested and approved according to ECE* R 129/01	
	Body size	Body weight
TRIFIX ² i-SIZE	76–105 cm	≤ 22 kg

*ECE = European Standard for Child Safety Equipment

The child safety seat has been designed, tested and approved according to the requirements of the European Standard for Child Safety Equipment (ECE R 129/01). The seal of approval "E" (in a circle) and the approval number are located on the orange approval label (sticker on the child safety seat).

⚠ DANGER! This certification will be invalidated if you make any modifications to the child safety seat. Only the manufacturer is permitted to make modifications to the child safety seat. Unauthorised technical changes can cause the protective function of the seat to be reduced or completely eliminated. Do not make any technical changes to the child safety seat.

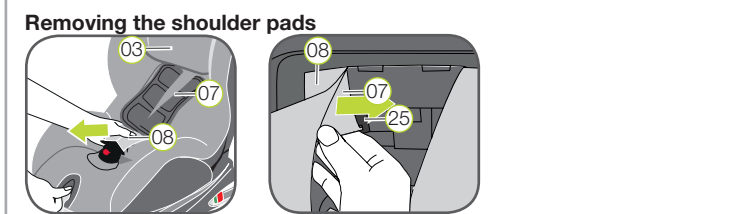
⚠ DANGER! Use the TRIFIX² i-SIZE exclusively for securing your child in your vehicle. It is in no way suitable for use as a seat or toy in the home.

- Pull the cover up and over the border of the strap adjuster.
 - Unthread the harness buckle 04 and the strap end 09 from the cover.
 - Pull the cover upwards a little and then put it with the recess over the headrest 03.
- ⚠ DANGER!** The child seat must not be used without the seat cover.

Reattaching the cover:

Proceed in reverse order to put on the cover.

⚠ Caution: The harnesses must not be twisted and must be correctly positioned in the harness slots.



- Removing the shoulder pads**
- Loosen the shoulder straps 08 as far as possible.
 - Slide the headrest 03 into the second position from the top.
 - Fold up the bottom part of the headrest 03 upwards.
 - Open the shoulder pads 07 at the Velcro fasteners at the side.
- Rear of the child safety seat
- Open the operating instructions compartment 14.
 - Pull out the shoulder straps 08 a little so that you can see the strap loops of the shoulder pads 07 underneath.
 - Unhook the strap loops from the plastic fasteners 25 of the height adjuster.
 - Pull the shoulder pads 07 forwards out of the harness slots.

Re-attaching the shoulder pads:

Simply follow the steps above in reverse order.

⚠ Caution: The shoulder pads 07 or harnesses must not be twisted or changed places. The shoulder straps 08 must be located under the black cover band 21 in the shoulder pads 07.

3. USE IN THE VEHICLE

Please observe the instructions for using children's restraining systems in the operating instructions of your vehicle. During use, be sure to observe any restrictions relating to airbags. Please refer to the operating instructions for your vehicle for information about vehicle seats which are certified for the use of children's restraining systems according to ECE R16.

TRIFIX² i-SIZE usage options:

BRITAX RÖMER child safety seat	Vehicle seat position with ISOFIX and top tether	
	i-Size	Not i-Size
TRIFIX ² i-SIZE	✓	✓

You can use your child safety seat as follows:

In the direction of travel	Yes ¹⁾
Against the direction of travel	No
On seats featuring: ISOFIX fastenings (between the seat surface and backrest) and top tether anchoring points (e.g. on the loading area, on the floor or behind the backrest)	Yes ²⁾

76–105 cm ≤ 22 kg

(Please observe the applicable regulations in force in your country)

- Using the seat in a backwards-facing car seat (e.g. in a van or minibus) is only permitted if the car seat is also approved for transporting adults. The seat may not be in the area of effect of an airbag.
- If there is a passenger airbag: Slide the passenger seat well backwards and follow any relevant directions in your vehicle's operating instructions.

76–105 cm ≤ 22 kg

TRIFIX² i-SIZE

User instructions

GB



5. SAFETY NOTES

⚠ Please take the time to read these instructions carefully and keep them to hand in the intended storage compartment (14) on the child safety seat at all times. The instructions must be kept with the child safety seat if the latter is passed on to a third party.

⚠ DANGER! For the protection of your child:

- In the event of an accident with a collision speed of more than 10 km/h, the child safety seat may be damaged without the damage becoming immediately visible. In this case the child safety seat must be replaced. Please dispose of it properly.
- As a rule, have your child safety seat checked if it was damaged (e.g. if it falls on the ground).
- Regularly check all important parts for damage. Ensure that all mechanical parts, in particular, are fully functional.
- Never lubricate or oil parts of the child seat.
- Never leave your child unattended in the child seat in the vehicle.
- Only allow your child to enter and exit the vehicle on the pavement side.
- Protect the child safety seat from intensive direct sunlight when it is not in use. The child safety seat can get very hot in direct sunshine. Children's skin is sensitive and could be harmed as a result.
- The more snugly the belt fits over your child's body, the better they will be protected. Therefore, avoid putting thick clothes on your child under the belt.
- Take regular breaks on long journeys in order to give your child the opportunity to run about and play.
- Use on the rear seat: Move the front seat far enough forwards to ensure that your child's feet cannot hit the backrest of the front seat (to prevent the risk of injury).

⚠ DANGER! For the protection of all vehicle occupants:

- In the case of an emergency stop or an accident, unsecured persons or objects may cause injury to other vehicle occupants. Please always check that...
- no other load-bearing contact points are used other than those specified in these instructions and marked out on the child safety seat.
 - the backrests of the vehicle seats are locked (i.e. that a foldable rear seat bench latch is engaged).
 - all heavy or sharp-edged objects in the vehicle (e.g. on the parcel shelf) are secured.
 - all persons in the vehicle have their seatbelts fastened.

- the child safety seat is always secured when it is in the vehicle, even if no child is being transported.

⚠ WARNING! For your protection when handling the child seat:

- Never use the child safety seat free-standing, not even for test sitting.
- To avoid damage, ensure that the child safety seat is not jammed in between hard objects (car door, seat rails, etc.).
- Keep the child safety seat in a safe place when it is not in use. Do not place any heavy objects on the seat and do not store it directly next to sources of heat or in direct sunlight.

⚠ CAUTION! To protect your vehicle:

- Certain car seat covers made from more sensitive materials (e.g. velour, leather, etc.) may sustain signs of wear and tear when using child safety seats. For optimum protection of your car seat covers, we recommend using the BRITAX RÖMER car seat protector from our range of accessories.

6. PREPARATORY WORK



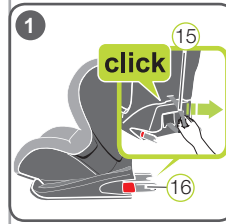
1. If your vehicle is not fitted with ISOFIX insertion aids by standard, clamp the two insertion aids (02), which are included in the scope of delivery of the seat*, with the section pointing upwards to the two ISOFIX fastening points (01) of your vehicle.

ⓘ TIP: The ISOFIX fastening points are located between the surface and the backrest of the vehicle seat.

2. Move the headrest of the vehicle seat into the top position.

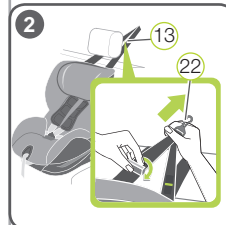
* The insertion aids facilitate the installation of the child safety seat with the use of the ISOFIX fastening points and prevent damage to the car seat covers. As long as they are not used, remove them and keep them in a safe place. For vehicles with a foldable backrest, the insertion aids need to be removed before folding the backrest. Any problems occurring usually come from soiling or external objects on the insertion aids and on the hook. Remove soiling or external objects to rectify such problems.

7. INSTALLATION OF THE CHILD SAFETY SEAT



1. PREPARING THE ISOFIX

- 1.1 Pull the grey fabric loop (15), until the ISOFIX locking arms (16) are fully extended.
- 1.2 Push the green safety button (06) and the red release button (05) on both sides of the seat towards each other. This ensures that both hooks on the ISOFIX locking arms (16) are open and ready to use.



2. PREPARING THE TOP TETHER

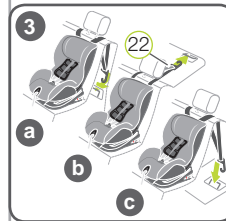
- 2.1 Remove the top tether (13) from the user and operating instructions compartment (14) and place it over the child safety seat.

ⓘ TIP: Only remove the red rubber band if the length of the top tether (13) is not sufficient for your vehicle model.

- 2.2 Place the child seat facing forward (in the direction of travel) on a suitable vehicle seat. Adjust the backrest angle of the car seat so that the gap between the car seat and the child safety seat is as small as possible.

- 2.3 Take the top tether (13) and press the metal tongue (26) away from the harness in order to make the harness longer and pull the top tether (13) on the snap-in hook (22) until it forms a V shape.

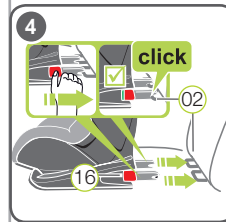
- 2.4 Guide the top tether (13) on the left and right side up to the headrest.



3. FASTENING THE TOP TETHER

Fit the snap-in hook (22) into the top-tether anchoring point recommended in your vehicle's operating instructions.

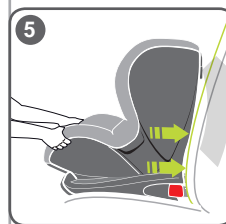
⚠ CAUTION! Make sure that you do not use the luggage hooks instead of the top-tether anchoring points. Look for the following symbol in your vehicle:



4. FASTENING THE ISOFIX

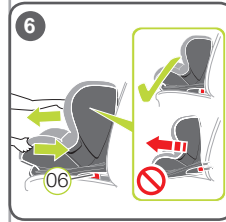
- 4.1 Position the two ISOFIX locking arms (16) directly in front of the two insertion aids (02).
- 4.2 Push both ISOFIX locking arms (16) into the insertion aids (02) until the ISOFIX locking arms (16) engage on both sides with a clicking sound.

⚠ DANGER! The green safety button (06) must be visible on both sides so that the child safety seat is correctly fastened.



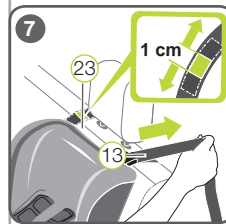
5. PUSHING THE CHILD SAFETY SEAT UNTIL SECURE

Push the child safety seat firmly backwards as far as it will go.



6. CHECKING THE FASTENING

Shake the child safety seat to ensure that it is securely fastened and check the safety buttons (06) to make sure that the two indicators are fully on in green.



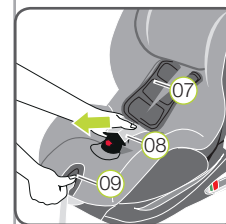
7. TENSIONING THE TOP TETHER

Tighten the belt strap of the top tether (13), until the belt tension indicator (23) turns green and the top tether (13) is taut.

8. SECURING YOUR CHILD

Carry out the steps specified in Section 8, "USING THE CHILD SAFETY SEAT".

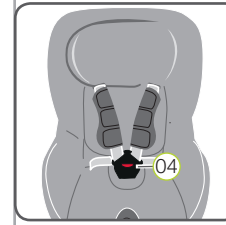
8. USING THE CHILD SAFETY SEAT



1. LOOSENING THE SHOULDER STRAPS

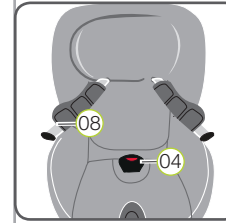
To loosen the shoulder straps, press the adjustment button (09) and, at the same time, pull both shoulder straps (08) forward.

⚠ IMPORTANT! Do not pull the shoulder pads (07).



2. OPENING THE HARNESS BUCKLE

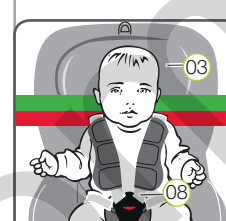
To open the harness buckle (04), press the red button on the harness buckle.



3. POSITIONING CHILD IN THE SEAT

Place your child in the child safety seat.

Make sure that the buckle (04) is folded forwards and place your child in the child safety seat.



4. FITTING THE SHOULDER STRAPS

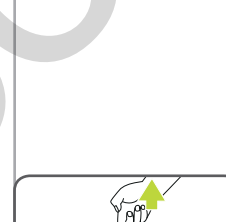
Lay the shoulder straps (08) over your child's shoulders.

⚠ WARNING! Do not twist or swap the shoulder straps, as this will invalidate the protective function.

5. ADJUSTING THE HEADREST

A correctly adjusted headrest (03) ensures optimum protection for your child in the child safety seat:

The headrest (03) must be adjusted so that the shoulder straps (08) are at the same level as your child's shoulders or slightly higher.



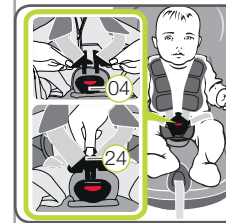
▶ The shoulder straps (08) must be adjusted so that they run horizontally or just above your child's shoulders.

▶ The shoulder straps (08) are not allowed to run behind your child's back, or level with/above their ears.

To adjust the headrest:

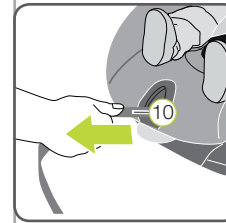
- 5.1 Pull the adjusting ring (12) of the head rest (03) upwards.

- 5.2 Move the headrest (03) to the correct shoulder strap height and make sure it is correctly fastened by moving the headrest (03) down slightly.



6. FASTENING THE HARNESS BUCKLE

Bring the two buckle tongues (24) together and interlock them before inserting them into the harness buckle (04) – you must be able to hear a "click" noise when doing this.



7. TENSIONING THE ADJUSTING STRAP

Pull the adjusting strap (10) until the strap lies flat and snug on your child's body.

⚠ WARNING! The hip belt must lie as low as possible over your child's groin.

⚠ Before each car journey, in order to ensure your child's safety, make sure that:

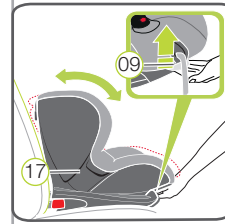
- the child safety seat is fastened in the ISOFIX fastening points (01) on both sides with the ISOFIX locking arms (16) and both safety buttons (06) are completely green

- the child safety seat is securely fastened
- the top tether (13) is taut over the backrest of the car seat and the belt tension indicator (23) is green
- the harness of the child safety seat is fitted snugly to the child's body without being constricting
- the shoulder straps (08) are correctly adjusted and the straps are not twisted
- the shoulder pads (07) are in the correct position on your child's body
- the buckle tongues (24) are fastened into the harness buckle (04).

⚠ DANGER! If your child tries to open the ISOFIX safety buttons (06) or the harness buckle (04) stop as soon as possible. Check whether the child safety seat is correctly fastened and ensure that your child is correctly secured. Explain to your child the dangers associated with their actions.

9. ADJUSTING THE SEAT ANGLE

The seat shell of the TRIFIX² i-SIZE can be used in three different reclined positions:



To adjust the seat angle:

Push up the adjusting handle (09) and pull / slide the seat shell (17) into the desired position.

⚠ DANGER! The seat shell (17) must engage securely regardless of its position. Pull up on the seat shell (17) to ensure that it is engaged.

ⓘ TIP: You can even adjust the reclined position of the seat shell (17) while your child is sitting in the child safety seat.

If you have any further questions regarding the use of the carrier, please feel free to contact us:

BRITAX RÖMER
Kindersicherheit GmbH
Theodor-Heuss-Straße 9
89340 Leipheim
Germany
T: +49 (0) 8221 3670 -199/-299
F: +49 (0) 8221 3670 -210
E: service.de@britax.com
www.britax.com

BRITAX EXELSIOR LIMITED
1 Churchill Way West
Andover
Hampshire SP10 3UW
United Kingdom
T: +44 (0) 1264 333343
F: +44 (0) 1264 334146
E: service.uk@britax.com
www.britax.com

10. REMOVING THE CHILD SAFETY SEAT

1. Loosen the top tether (13) by pushing away the metal tongue (26) from the harness.
 2. Unhook the snap hook (22) from the anchoring point in the vehicle and lay the top tether (13) to the front over the child safety seat.
 3. Loosen the ISOFIX fastening on both sides by pressing the green safety button (06) and the red release button (05) towards each other.
 4. Pull the seat forwards and stow the top tether (13) in the operating instructions compartment (14).
 5. Move the ISOFIX locking arms (16) back into the seat shell (17).
- ⓘ TIP:** The ISOFIX locking arms are protected against damage once they are put back into the seat bottom.

⚠ DANGER! Remove the child safety seat from the vehicle. Never transport the child safety seat in the car if it is not fastened properly.

11. DISPOSAL

Please observe the waste disposal regulations in your country.

Disposal of packaging	Container for cardboard boxes
Seat cover	Residual waste, waste incineration
Plastic parts	To be placed in the corresponding container according to labelling
Metal parts	Container for metals
Belt straps	Container for polyester
Buckle and tongue	Residual waste