



PHONES

0 (800) 800 130  
(050) 462 0 130  
(063) 462 0 130  
(067) 462 0 130

130  
COM.UA

Internet store of  
autogoods



SKYPE

km-130

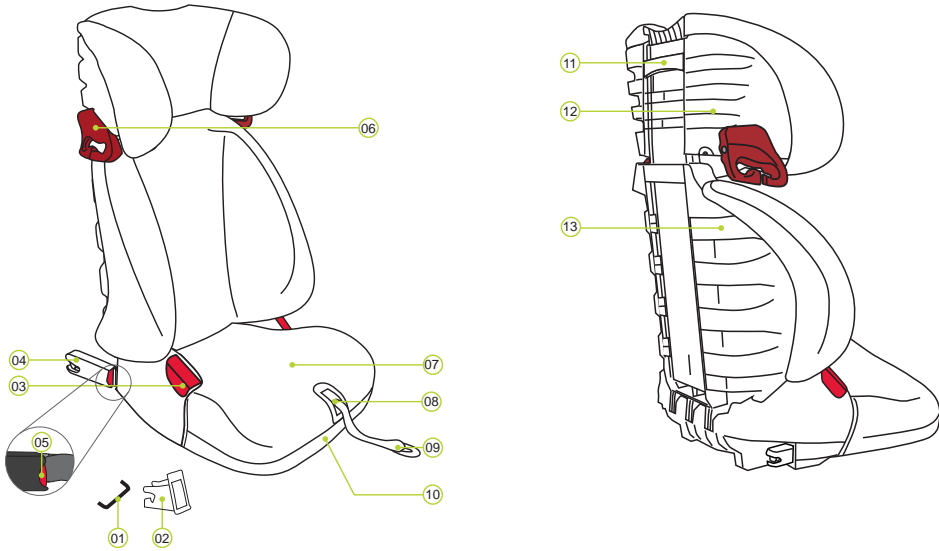
CAR RECEIVERS — Receivers • Media receivers and stations • Native receivers • CD/DVD changers • FM-modulators/USB adapters • Flash memory • Facia plates and adapters • Antennas • Accessories |  
CAR AUDIO — Car audio speakers • Amplifiers • Subwoofers • Processors • Crossovers • Headphones • Accessories | TRIP COMPUTERS — Universal computers • Model computers • Accessories |  
GPS NAVIGATORS — Portable GPS • Built-in GPS • GPS modules • GPS trackers • Antennas for GPS navigators • Accessories | VIDEO — DVR • TV sets and monitors • Car TV tuners • Cameras • Videomodules  
• Transcoders • Car TV antennas • Accessories | SECURITY SYSTEMS — Car alarms • Bike alarms • Mechanical blockers • Immobilizers • Sensors • Accessories | OPTIC AND LIGHT — Xenon • Bixenon • Lamps  
• LED • Stroboscopes • Optic and Headlights • Washers • Light, rain sensors • Accessories | PARKTRONICS AND MIRRORS — Rear parktronic • Front parktronic • Combined parktronic • Rear-view mirrors  
• Accessories | HEATING AND COOLING — Seat heaters • Mirrors heaters • Screen-wipers heaters • Engine heaters • Auto-refrigerators • Air conditioning units • Accessories | TUNING — Vibro-isolation  
• Noise-isolation • Tint films • Accessories | ACCESSORIES — Radar-detectors • Handsfree, Bluetooth • Windowlifters • Compressors • Beeps, loudspeakers • Measuring instruments • Cleaners • Car seats  
• Miscellaneous | MOUNTING — Installation kits • Upholstery • Grilles • Tubes • Cable and wire • Tools • Miscellaneous | POWER — Batteries • Converters • Start-charging equipment • Capacitors  
• Accessories | MARINE AUDIO AND ELECTRONICS — Marine receivers • Marine audio speakers • Marine subwoofers • Marine amplifiers • Accessories | CAR CARE PRODUCTS — Additives • Washer fluid •  
Care accessories • Car polish • Flavors • Adhesives and sealants | LIQUID AND OIL — Motor oil • Transmission oil • Brake fluid • Antifreeze • Technical lubricant



In store "130" you can find and buy almost all necessary goods for your auto in Kyiv and other cities, delivery by ground and postal services. Our experienced consultants will provide you with exhaustive information and help you to choose the very particular thing. We are waiting for you at the address

<https://130.com.ua>

### 1. PRODUCT OVERVIEW



- 01 ISOFIX attachment points (car)
- 02 ISOFIX insertion aids
- 03 Belt guide (bright red)
- 04 ISOFIT Locking arms
- 05 ISOFIT Locking button
- 06 Belt holder
- 07 Seat cushion
- 08 ISOFIT Adjustment button
- 09 Adjustment belt
- 10 Compartment for user manual
- 11 Headrest adjustment handle
- 12 Headrest
- 13 Backrest

### 4. USE IN THE VEHICLE

Please observe the instructions for using children's restraining systems in the operating instructions of your vehicle. The seat can be used in vehicles with ISOFIX anchoring systems (see type list) and in vehicles with a 3-point belt.

Please find the information on the seats approved for child safety seats of the weight classes 15 to 36 kg in the operating instructions of your vehicle.

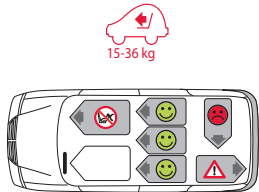
The DISCOVERY SL is approved for two different methods of installation:

Symbol	Installation type	Approval type	Section
	with the ISOFIT locking arms into the ISOFIX fastening points in the vehicle. Check the list of vehicle types.	semi-universal a)	9A
	with the vehicle's 3-point seatbelt	universal	9B

a) This means that the child safety seat may only be used in vehicles that are listed in the vehicle type list enclosed. This type list is consistently kept up to date. The latest version can be obtained from us or from [www.britax.com](http://www.britax.com)

You can use your child safety seat as follows:

In the direction of travel	Yes
Against the direction of travel	No <sup>1)</sup>
with 2-point belt	No
with 3-point belt <sup>2)</sup>	Yes
with ISOFIX fastening points (between seat surface and backrest)	Yes
on front passenger seat	Yes <sup>3)</sup>
on outer rear seat	Yes
on centre rear seat (with 3-point belt)	Yes <sup>4)</sup>



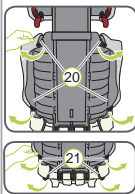
- 1) Use is permitted on a rearward-facing vehicle seat (e.g. in a van or minibus) only if the vehicle seat is also approved for use by adults. The seat may not be in the area of effect of an airbag.
- 2) The safety belt must be approved to ECE R 16 or a comparable standard (see test label on belt with an "E" or "e" in a circle).
- 3) If there is a front airbag: Slide the vehicle seat a long way back and refer to any instructions in vehicle owner's manual.
- 4) Cannot be used if the vehicle seat is equipped with only a 2-point belt.

### 5. CARE AND MAINTENANCE

Please ensure that you only use the original BRITAX RÖMER replacement seat covers, as the seat cover is an integral part of the child safety seat and fulfils important functions to ensure the smooth operation of the system. You can obtain replacement seat covers from your dealer.

- The cover can be removed and washed with a mild detergent in the delicates programme of the washing machine (30 °C). Please observe the instructions on the washing label of the cover.
- The plastic parts can be cleaned using soapy water. Do not use any caustic cleaning agents (such as solvents).

**⚠ DANGER!** The child seat must not be used without the seat cover.



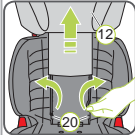
#### Removing the seat cover

1. Moving the headrest of the vehicle seat into the top position.
2. Unhook the cover hooks 20 on the rear of the backrest 13.
3. Remove the upper part of the cover.
4. Unhook the cover loops 21 at the bottom on the rear of the backrest 13.
5. Pull off the cover from the seat cushion 07.



#### Removing the headrest cover

6. Unhook the cover loops 21 on the back of the headrest 12.



7. Unhook the cover hooks 20 on the front of the backrest 13.
8. Pull off the cover of the headrest 12.

► The cover can now be washed. Please observe the instructions on the washing label of the cover:



#### Re-fitting the cover

Proceed in reverse order to put on the cover.

### 2. INTRODUCTION

We are pleased that you have chosen our DISCOVERY SL to accompany your child safely through a new stage of his or her life.

**In order to protect your child correctly, the DISCOVERY SL must always be used and installed as described in these instructions.**

If you have any further questions regarding its use, please feel free to contact us:

**Britax Childcare**  
 Britax Römer  
 Kindersicherheit GmbH  
 Blaubeurer Strasse 71  
 D-89077 Ulm  
 Germany  
 T: +49 (0) 731 9345-199/-299  
 F: +49 (0) 731 9345-210  
 E: [service.de@britax.com](mailto:service.de@britax.com)  
[www.britax.com](http://www.britax.com)

**Britax Childcare**  
 Britax Exelsior Limited  
 1 Churchill Way West  
 Andover  
 Hampshire SP10 3UW  
 United Kingdom  
 T: +44 (0) 1264 333343  
 F: +44 (0) 1264 334146  
 E: [service.uk@britax.com](mailto:service.uk@britax.com)  
[www.britax.com](http://www.britax.com)

These instructions use the following symbols stated below:

Symbol	Keyword	Explanation
	<b>DANGER!</b>	Risk of severe personal injury
	<b>WARNING!</b>	Risk of minor personal injury
	<b>CAUTION!</b>	Risk of material damage
	<b>TIP:</b>	Useful notes

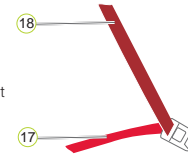
Instructions that follow a set sequence are numbered.

Example:

1. Press the button...

#### Belt guide colours

For better differentiation, the two vehicle seat belts are highlighted in different colours. The diagonal seat belt 18 in dark red and the lap belt 17 in bright red. The colour of the belt guides on the child safety seat follows the same colour scheme.



### 3. APPROVAL

BRITAX RÖMER Vehicle child seat	Testing and certification In accordance with ECE* R 44/04	
	Group	Body weight
DISCOVERY SL	II+III	15 to 36 kg

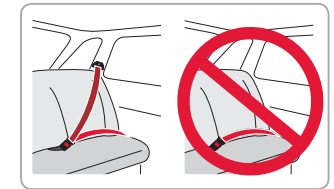
\*ECE = European Standard for Child Safety Equipment

The child safety seat has been designed, tested and certified according to the requirements of the European Standard for Child Safety Equipment (ECE R 44/04). The seal of approval E (in a circle) and the approval number are located on the orange approval label (sticker on the child safety seat).

**⚠ DANGER!** This approval will be invalidated if you make any modifications to the child safety seat. Only the manufacturer is permitted to make modifications to the child safety seat.

**⚠ WARNING!** Use the DISCOVERY SL exclusively for securing your child in your vehicle. It is in no way suitable as a seat or toy in the home.

**⚠ DANGER!** Never secure your child or the child safety seat with a 2-point belt. If you secure your child in the child seat with only a 2-point belt, then in the event of an accident this may cause serious injuries to your child, possibly resulting in death.

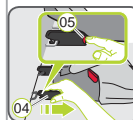


### 6. DISASSEMBLY AND DISPOSAL

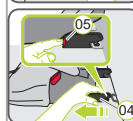
#### UNFASTENING YOUR CHILD:

1. To unfasten your child, use the release button of your vehicle seat buckle.

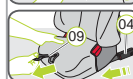
#### REMOVAL:



1. Operate the release button of your vehicle seat buckle.
2. Pull out the diagonal belt from the dark red belt holder 06 on the headrest 12.



- Only for installation type A (ISOFIT):**
3. Press the red ISOFIT locking button to release the ISOFIT fastening 05 and pull out the ISOFIT locking arm 04. Repeat the procedure with the other ISOFIT locking arm 04.
  4. Pull on the adjustment belt 09 until both ISOFIT locking arms 04 are in the storage position.



► The child safety seat can now be removed.

**⚠ DANGER!** The child safety seat must always be secured when it is in the vehicle, even if no child is being transported.

#### DISPOSAL:

Please observe the waste disposal regulations in your country.

Disposal of packaging	Container for cardboard boxes
Seat cover	Residual waste, thermal utilisation
Plastic parts	According to the labelling in the corresponding container
Metal parts	Container for metals
Belt straps buckle and tongue	Container for polyester Residual waste

15 to 36 kg

(~4 to 12 years of age)



## DISCOVERY SL

User instructions

GB



[www.britax.com](http://www.britax.com)



## 7. SAFETY NOTES

**⚠ Please take the time to read these instructions carefully and keep them to hand in the intended storage compartment (13) on the child safety seat at all times! The instructions must be with the child safety seat if the latter is passed on to a third party.**

**⚠ DANGER! For the protection of your child:**

- In the event of an accident with a collision speed of more than 10 km/h, the child safety seat may be damaged without the damage becoming immediately visible. In this case the child safety seat must be replaced. Please dispose of it properly.
- As a rule, have your child safety seat checked if it was damaged (e.g. if it falls on the ground).
- Regularly check all important parts for damage. Ensure that all mechanical parts, in particular, are fully functional.
- Never lubricate or oil parts of the child seat.
- Never leave your child unattended in the child seat in the vehicle.
- Only allow your child to enter and exit the vehicle on the pavement side.
- Protect the child safety seat from intensive direct sunlight when it is not in use. The child safety seat can get very hot in direct sunshine. Child skin is sensitive and could thereby be harmed.
- The more snugly the belt fits over your child's body, the better they will be protected. Therefore avoid putting thick clothes on your child under the belt.
- Take regular breaks on long journeys in order to give your child the opportunity to play around.
- Use on the rear seat: Move the front seat forward far enough that your child's feet cannot hit the backrest of the front seat (to prevent risk of injury).

**⚠ DANGER! For the protection of all vehicle occupants:**

In the case of an emergency stop or an accident, unsecured persons or objects may cause injury to other vehicle occupants. Please always check that...

- the backrests of the vehicle seats are locked (i.e. that any foldable rear seat bench latch is engaged).
- all heavy or sharp-edged objects in the vehicle (e.g. on the parcel shelf) are secured.
- all persons in the vehicle have their seatbelts fastened.
- the child safety seat is always secured when it is in the vehicle, even if no child is being transported.

**⚠ WARNING! For your protection when handling the child seat:**

- Never use the child safety seat free-standing, not even for test sitting.
- When swivelling up the backrest (13), nothing must come between the backrest (13) and the seat cushion (07). You or your child could pinch your fingers, injuring them.
- To avoid damage, ensure that the child safety seat is not jammed in between hard objects (car door, seat rails, etc.).
- Keep the child safety seat in a safe place when it is not in use. Do not place any heavy objects on the seat and do not store it directly next to sources of heat or in direct sunlight.

**⚠ CAUTION! To protect your vehicle:**

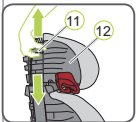
- Certain car seat covers made from more sensitive materials (e.g. velour, leather, etc.) may sustain signs of wear and tear when using child safety seats. For optimum protection of your car seat covers, we recommend using the BRITAX RÖMER car seat protector from our range of accessories.

## 8. ADJUSTING THE HEADREST

A correctly set headrest (12) ensures that the diagonal seat belt section (18) is optimally positioned, and gives your child optimum protection. The headrest (12) must be adjusted so that there is a space two fingers wide between the headrest (12) and your child's shoulders.

**To adjust the height of the headrest to fit your child:**

1. Unhook the adjustment handle (11) on the back of the headrest (12). This unlocks the headrest.
2. You can now move the unlocked headrest (12) to the desired height. As soon as you release the adjustment handle (11), the headrest (12) will lock into place.
3. Place the child safety seat on the vehicle seat.
4. Have your child sit down in the child safety seat and check the height. Repeat the procedure until the headrest (12) has the correct height.



## 9. INSTALLATION

### A With ISOFIT + 3-point belt

The DISCOVERY SL is installed permanently in the vehicle with the ISOFIT locking arms.

Your child is then buckled into the child seat with the vehicle's 3-point seatbelt.

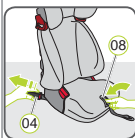


1. If your vehicle is not fitted with ISOFIX insertion aids by standard, clamp the two insertion aids (02), which are included in the scope of delivery of the seat\*, with the section pointing upwards to the two ISOFIX fastening points (01) of your vehicle.

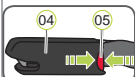
**ⓘ TIP!** The ISOFIX fastening points are located between the surface and the backrest of the vehicle seat.

\* The insertion aids facilitate the installation of the child safety seat with the use of the ISOFIX fastening points and prevent damage to the car seat covers. As long as they are not used, remove them and keep them in a safe place. For vehicles with foldable backrest, the insertion aids need to be removed before folding the backrest. Any problems occurring usually come from soiling or external objects on the insertion aids and on the hook. Remove soiling or external objects to rectify such problems.

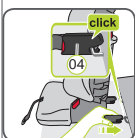
2. Moving the headrest of the vehicle seat into the top position.
3. Carry out the steps in Section 8 "ADJUSTING THE HEADREST".
4. Place the child seat facing forward (in the direction of travel) on a suitable vehicle seat.



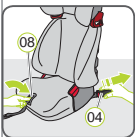
5. Hold the ISOFIT adjustment button (08) down and fully extend the ISOFIT locking arm furthest from the vehicle door (04).



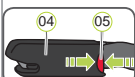
6. Press the red ISOFIT locking button (05) to ensure that the hook on the ISOFIT locking arm (04) is open and ready for use.



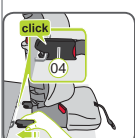
7. Push both ISOFIT locking arms (04) into the insertion aids (02) until the ISOFIT locking arm (04) engages with a clicking sound. **⚠ DANGER!** Check that the ISOFIT locking arm is correctly engaged (04) by pulling on it.



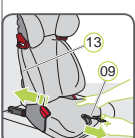
8. Hold the ISOFIT adjustment button (08) down and fully extend the ISOFIT locking arm nearest to the vehicle door (04).



9. Press the red ISOFIT locking button (05) to ensure that the hook on the ISOFIT locking arm (04) is open and ready for use.



10. Push both ISOFIT locking arms (04) into the insertion aids (02) until the ISOFIT locking arm (04) engages with a clicking sound. **⚠ DANGER!** Check that the ISOFIT locking arm is correctly engaged (04) by pulling on it.



11. Pull on the adjustment belt (09) and push the child seat backwards at the same time, until the die backrest (13) is flush with the backrest of the vehicle seat.



12. Give the child safety seat a firm pull forwards to ensure that it is securely fastened and check the ISOFIT locking arms (04) again to ensure that both are fully locked in place.
13. Carry out the steps in Section 10 "SECURING YOUR CHILD".

**⚠ For the safety of your child, before every journey in the car check that...**

- ▶ the child safety seat is slotted in on both sides with the ISOFIT locking arms (04) in the ISOFIT fastening points (01);
- ▶ the child safety seat is securely fastened;
- ▶ the lap belt (17) runs in the bright red belt guides on both sides of the seat cushion (03);
- ▶ the diagonal seat belt section (18) on the side of the vehicle seatbelt buckle (19) also runs through the light red belt guide (03) of the seat cushion,
- ▶ the diagonal seat belt section (18) runs through the dark red belt holder (06) of the headrest;
- ▶ the diagonal seat belt section (18) runs diagonally backward,
- ▶ the straps are tight and **not** twisted,
- ▶ the seatbelt buckle (19) **must not** be positioned on the red belt guide (03) in the seat cushion.

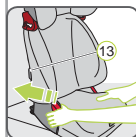
**⚠ DANGER!** If your child tries to open the red ISOFIT safety button (05) or the vehicle belt buckle (19), stop the vehicle as soon as safely possible. Check whether the child safety seat is correctly fastened and ensure that your child is correctly secured. Explain to your child the dangers associated with his actions.

#### UNFASTENING YOUR CHILD AND REMOVAL:

To unfasten your child or to remove the child safety seat, observe the steps in Section 6 "REMOVAL AND DISPOSAL" [PAGE I]

### B With 3-point belt

The DISCOVERY SL is not installed permanently in the vehicle. It is simply secured together with your child using the vehicle's 3-point seatbelt.



1. Carry out the steps in Section 8 "ADJUSTING THE HEADREST".
2. Place the child seat on the vehicle seat. Ensure that the backrest (13) is flush with the backrest of the vehicle seat. **ⓘ Tip!** If the headrest of the vehicle seat gets in the way, turn it the other way.
3. Carry out the steps in Section 10 "SECURING YOUR CHILD".

**⚠ For the safety of your child, before every journey in the car check that...**

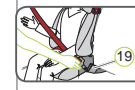
- ▶ the child safety seat is securely fastened;
- ▶ the lap belt (17) runs in the bright red belt guides on both sides of the seat cushion (03);
- ▶ the diagonal seat belt section (18) on the side of the vehicle seatbelt buckle (19) also runs through the light red belt guide (03) of the seat cushion,
- ▶ the diagonal seat belt section (18) runs through the dark red belt holder (06) of the headrest;
- ▶ the diagonal seat belt section (18) runs diagonally backward,
- ▶ the straps are tight and **not** twisted,
- ▶ the seatbelt buckle (19) **must not** be positioned on the red belt guide (03) in the seat cushion.

**⚠ DANGER!** If your child tries to open the vehicle belt buckle (19), stop the vehicle as soon as safely possible. Check whether the child safety seat is correctly fastened and ensure that your child is correctly secured. Explain to your child the dangers associated with his actions.

#### UNFASTENING YOUR CHILD AND REMOVAL:

To unfasten your child or to remove the child safety seat, observe the steps in Section 6 "REMOVAL AND DISPOSAL" [PAGE I]

## 10. SECURING YOUR CHILD



1. Have your child sit down in the child seat.
2. Pull out the vehicle belt and guide it in front of your child to the vehicle seat buckle (19).

**⚠ DANGER!** Ensure the vehicle belt is not twisted, as otherwise the full protective effect of the retaining system is not ensured.



3. Engage the buckle tongue in the vehicle seat buckle (19) with a CLICK!

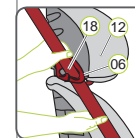


4. Place the diagonal seat belt section (18) and lap belt section (17) on the side of the vehicle seatbelt buckle (19) into the light red belt guide (03) of the seat cushion.

**⚠ DANGER!** The vehicle seatbelt buckle (19) must not be positioned between the light red belt guide (06) and the armrest.



5. Also place the lap belt section (17) on the other side of the seat cushion in the light red belt guide (03). **⚠ DANGER!** The lap belt section (17) must lie as low as possible over your child's hips on both sides.



6. Guide the diagonal seat belt section (18) into the dark red belt holder (06) of the headrest (14) until it lies completely in the belt holder (09) and is not twisted.

**ⓘ Tip!** If the backrest (16) conceals the belt holder (06), you can adjust the headrest (14) upwards. The diagonal seat belt section (18) can now be easily inserted. Now return the headrest (12) to the proper height.



7. Make sure that the diagonal belt (18) runs over your child's shoulder, and not in front of his or her neck. **ⓘ Tip!** You can still adjust the height of the headrest (12) again here in the vehicle.



8. **⚠ DANGER!** The diagonal seat belt section (18) must run diagonally backward. You can adjust the course of the belt with your child's adjustable belt deflector.

**⚠ DANGER!** The diagonal belt (18) must never be directed forwards to the belt deflector on the vehicle. In this case, use the child safety seat on the back seat only.



8. Tighten the vehicle seat belt by pulling on the diagonal seat belt section (18).
9. **Observe the further steps and the safety instructions of the relevant installation type.**

If you have any further questions regarding its use, please feel free to contact us:

**Britax Childcare**  
 Britax Römer  
 Kindersicherheit GmbH  
 Blaubeurer Strasse 71  
 D-89077 Ulm  
 Germany  
 T: +49 (0) 731 9345-199/299  
 F: +49 (0) 731 9345-210  
 E: service.de@britax.com  
 www.britax.com

**Britax Childcare**  
 Britax Exelsior Limited  
 1 Churchill Way West  
 Andover  
 Hampshire SP10 3JW  
 United Kingdom  
 T: +44 (0) 1264 333343  
 F: +44 (0) 1264 334146  
 E: service.uk@britax.com  
 www.britax.com