



(044) 338-0-130  
(050) 332-0-130  
(063) 577-0-130  
(067) 353-0-130

**130**  
**COM.UA**

# Internet store of autogoods



SKYPE  
km-130

CAR RECEIVERS — Receivers • Media receivers and stations • Native receivers • CD/DVD changers • FM-modulators/USB adapters • Flash memory • Facia plates and adapters • Antennas • Accessories | CAR AUDIO — Car audio speakers • Amplifiers • Subwoofers • Processors • Crossovers • Headphones • Accessories | TRIP COMPUTERS — Universal computers • Model computers • Accessories | GPS NAVIGATORS — Portable GPS • Built-in GPS • GPS modules • GPS trackers • Antennas for GPS navigators • Accessories | VIDEO — DVR • TV sets and monitors • Car TV tuners • Cameras • Videomodules • Transcoders • Car TV antennas • Accessories | SECURITY SYSTEMS — Car alarms • Bike alarms • Mechanical blockers • Immobilizers • Sensors • Accessories | OPTIC AND LIGHT — Xenon • Bixenon • Lamps • LED • Stroboscopes • Optic and Headlights • Washers • Light, rain sensors • Accessories | PARKTRONICS AND MIRRORS — Rear parktronic • Front parktronic • Combined parktronic • Rear-view mirrors • Accessories | HEATING AND COOLING — Seat heaters • Mirrors heaters • Screen-wipers heaters • Engine heaters • Auto-refrigerators • Air conditioning units • Accessories | TUNING — Vibro-isolation • Noise-isolation • Tint films • Accessories | ACCESSORIES — Radar-detectors • Handsfree, Bluetooth • Windowlifters • Compressors • Beeps, loudspeakers • Measuring instruments • Cleaners • Carsits • Miscellaneous | MOUNTING — Installation kits • Upholstery • Grilles • Tubes • Cable and wire • Tools • Miscellaneous | POWER — Batteries • Converters • Start-charging equipment • Capacitors • Accessories | MARINE AUDIO AND ELECTRONICS — Marine receivers • Marine audio speakers • Marine subwoofers • Marine amplifiers • Accessories | CAR CARE PRODUCTS — Additives • Washer fluid • Care accessories • Car polish • Flavors • Adhesives and sealants | LIQUID AND OIL — Motor oil • Transmission oil • Brake fluid • Antifreeze • Technical lubricant



In store "130" you can find and buy almost all necessary goods for your auto in Kyiv and other cities, delivery by ground and postal services. Our experienced consultants will provide you with exhaustive information and help you to chose the very particular thing. We are waiting for you at the address

<http://130.com.ua>



**HEYNER MOBIL AUTOMOTIVE GMBH**

Kurzer Weg 1-5

D-15859 Storkow

DEUTSCHLAND

Telefon: +49 (0) 33678 68748

Telefax: +49 (0) 33678 61044

Internet: [info@heyner-germany.de](mailto:info@heyner-germany.de)



ist eine Marke der alca mobil logistics + services gmbh, DEUTSCHLAND.  
Technische Änderungen vorbehalten.



GERMANY

## Bedienungsanleitung

**capsula  
MT5**

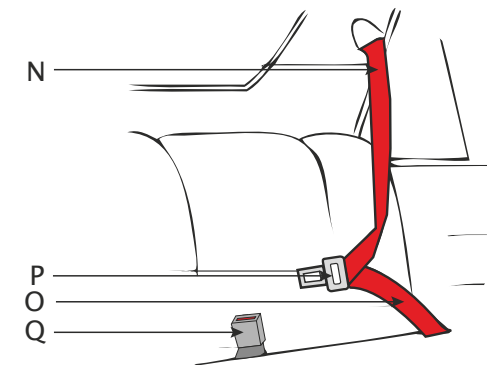
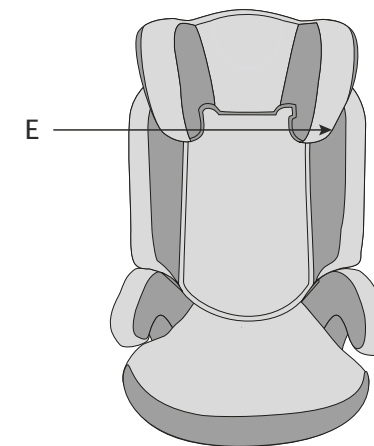
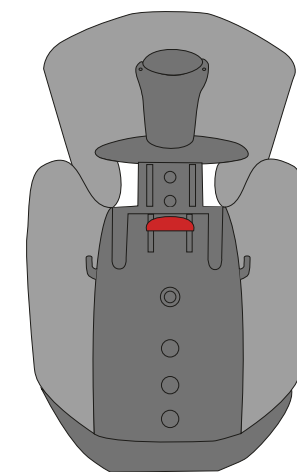
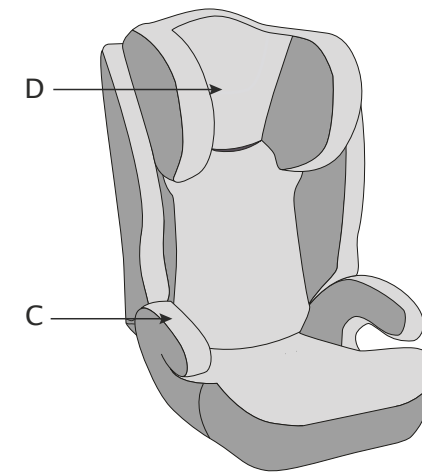
kg 15 - 36

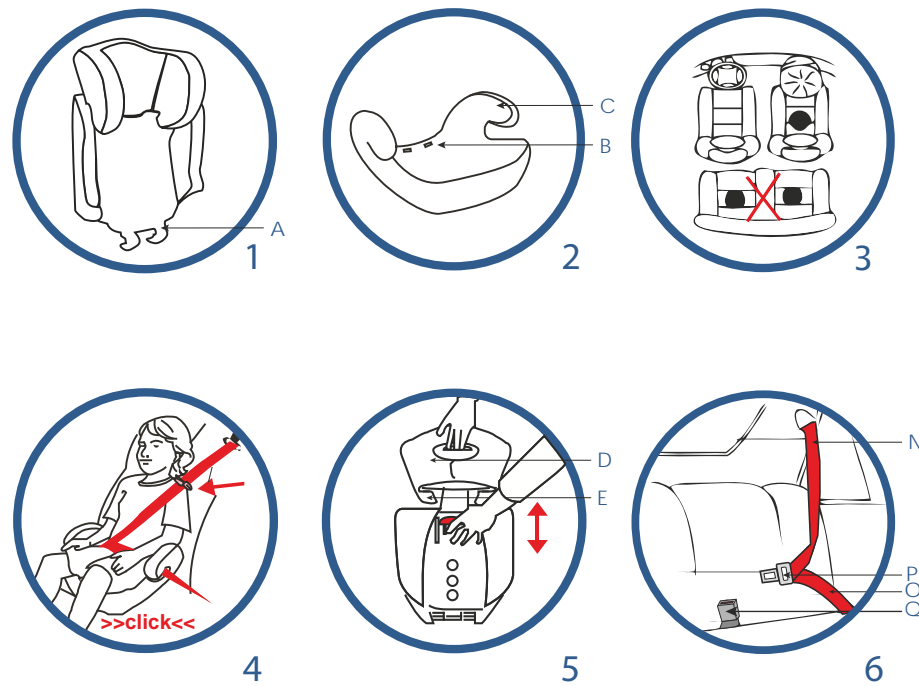
4 - 12  
Jahre

[capsula.com](http://capsula.com)



Autogoods "130"





**capsula**  
**MT5**



Bedienungsanleitung  
Instruction Manual  
Инструкция по обслуживанию  
Instrukcja obsługi  
Indice  
Brugervejledni

D  
GB  
RUS  
PL  
RO  
DK / N

#### Inhaltsverzeichnis

1. Verwendung des <b>capsula® MT5</b> als Autokindersitz	S. 1
2. Gruppe II+III (ab 15 bis 36 kg)	S. 1
3. Pflegeanleitung	S. 3
4. Sicherheitshinweise	S. 3
5. Wichtige Tipps	S. 4

#### Bedienungsanleitung

A Verbindungsstege	O Beckengurt des Auto-Dreipunktgurtes
B Stecklöcher	P Schlosszunge des Auto-Dreipunktgurtes
C Haltenasen für Dreipunktgurt	Q Gurtschloss des Auto-Dreipunktgurtes
D Kopfstütze	Z Entriegelungshebel für Kopfstütze
E Gurtführung	
N Diagonalgurt des Auto-Dreipunktgurtes	

## Index / page

1. Using the **capsula® MT5** as a child car seat
2. GROUP II+III (about 15 to 36 kg)
3. Care Instructions
4. Important Notices
5. Some final fints

## Operating Instructions

- A Connecting hooks
- B Fitting holes
- C Fixation lugs for three-point belt
- D Headrest
- E Belt guide
- N Diagonal belt of the three-point-vehicle-belt

- O Lap belt of the three-point-vehicle-belt
- P Belt latch of the three-point-vehicle-belt
- Q Belt buckle of the three-point-vehicle-belt
- Z Head rest de-block lever

1. Using the **capsula® MT5** as a child car seat

- S. 6
- S. 6
- S. 8
- S. 8
- S. 9

You have purchased the **capsula® MT5** car seat for your child. We thank you for your trust. Please note, that the optimum safety characteristics can only be achieved if the seat is used properly according to instructions. Therefore we ask you to ensure the correct installation of the seat in your vehicle by reading the operating instructions carefully. Please keep instructions always with the seat for further information. Only to be assembled by adults!

**Attention:**

Only use the **capsula® MT5** backrest in combination with the **capsula® MT5** booster. The backrest must not be used alone, as it doesn't guarantee any safety. To get maximum side protection in an accident, use the backrest for Group II+III consistently.

**Warning:**

Do not use **capsula® MT5** without backrest. In that case, the child can not get enough side protection in an accident.

## 2. GROUP II+III (about 15 to 36 kg)

## 2.1. Connecting the backrest to the booster seat (fig.1-3) (just if non-assembled)

If backrest (fig.1) and booster (fig.2) are delivered in a non-assembled way, please follow these instructions to connect both together before using it for children in group II.

Lay down the booster (fig.2) on the floor and the backrest (fig.1) flat right behind. Then thread the connecting hooks (A) on the bottom of the backrest into the fitting holes (B) on the back of the booster with a firm downwards motion. Now bring the backrest slowly upright, 90° to the booster.

The connecting hooks should now slip into the fitting holes with an audible sound. As the result the backrest should be well fixed to the booster in the upright position. It must not slip away now. Otherwise you may not have fixed it very well an using it would be dangerous. In this case please repeat the first steps of this part of the instruction.

## 2.2. Conditions for installing the seat in the car

The **capsula® MT5** may be placed on all passenger seats (fig.3) of the vehicle that are equipped with a three-point-vehicle-belt. The child seat must not be positioned on a vehicle seat, which only has a lap belt (O), example given the centre back seat of cars with three seats in the back.

The three-point-belt of a vehicle (fig.6) is made of 4 parts: the lap belt (O), the diagonal belt (N), the belt latch (P) and the belt buckle (Q).

## 2.3. Installing the capsula® MT5 into your car (fig.4)

Now place the **capsula® MT5** onto the passenger seat in the car and set your child into it. Secure your child in it by fastening the lap and diagonal belts of the three-point-vehicle-belts and locking it with an audible »click« sound. The lap belt (O) needs to lead under the fixation lugs (C) on both sides. The diagonal belt (N) needs to lead under the fixation lugs (C) only on the belt buckle's (Q) side. (Fig.4) Thread the diagonal belt through the side belt guide (E) (fig.5) on bottom of the headrest and tighten it in the direction of the retracting mechanism. Make sure that the diagonal belt lies firmly against the child's body and is not twisted. All belts must lie tightly against the child's body without being twisted. The lap belt must lie flat over the child's thigh.

If necessary, use the vehicle's belt height adjuster to correspond to your child's height. Please check the belt-run at least every six months and adjust the backrest to the new size of your growing child. Make sure that the lap belt runs through the fixation lugs (C) (fig.2) on both sides of the booster seat and that the diagonal belt goes only to the side leading to the belt buckle.

**Attention:** Never fasten the lap seatbelt differently, otherwise the child will not be held properly.

## 2.4. Adjusting of the headrest to the child's size (fig.5)

In order to adjust the height of the head rest to your child's size push the seat down on the vehicles seat to keep it there. With the other hand de-block the head rest de-block lever (Z) on the back of the head rest by pulling it backwards at the same time. Keep the lever de-blocked and pull the head rest simultaneously up or down, according to the child's size. Release the lever. The head rest needs to be fixed in one of the guide holes with an audible sound. Please check by pulling on the head rest, if it does not move anymore without pulling the lever. The middle of the head rest needs to be exactly at the height of the middle of the child's head to have the highest side protection effect. The distance between head rest and shoulder of the child should be 2 fingers. The headrest is adjustable in 7 different positions.

**Attention:** Check regularly if the headrest is still appropriate to your child's size.

**Warning:** Do not fasten the belts in any other way than described here, otherwise the child will not be held or secured properly. Make sure that the diagonal belt is carefully positioned and does not run too close to the child's neck. All belts must lie firmly against the child's body without twisting. If necessary, install a belt height adjuster mechanism into the car to correspond to your child's size.

## 3. Care Instructions

To wash the seat cover, simply peel it off in an upwards motion. The cover can be washed at 85°F/30°C.

**Attention:** Please do not spin. Do not dry in a dryer.

## 4. Important Notices

- The **capsula® MT5** child seat is approved in accordance to the European Standard for child restraint systems **ECE R44/04**. The test symbol as well as the permit number can be found on the orange label at the bottom of the seat.
- This child seat can only be used in vehicles with three-point seat-belts, that are approved by the ECE regulation No. 16 or other comparable standards. It is strictly forbidden to install this seat with the lap belt alone.
- It is not allowed to proceed any changes on the seat or the belts.
- Each change of any part of the seat, which is not done by the manufacturer, will cause the expiration of the ECE- approval and excludes immediately any warranties. Should any doubts or problems occur, contact your supplier, dealer or **HEYNER MOBIL AUTOMOTIVE GMBH**.
- After an accident, the entire child restraint system should be replaced or at least sent to the manufacturer for inspection, together with the accident report. The service cost will be charged.
- Always make sure that the belts only run along the tracks clearly red marked on the child seat (red belt guide markings).
- Loose or hanging parts of the seat should not be obstructed or restrained by other belts, belt locks or seats, especially if they change the position.
- Always secure the **capsula® MT5** child seat with the vehicle's adult seat-belt, even if no child is sitting in.
- The HEYNER child restraint systems can be used for many years. It is therefore possible that some parts are subject to wear and tear for example, the seat cover and have to be replaced at some point.
- Make sure that all hard or plastic parts are stored away and can not be lost.



- The child seat must never be used without its original cover. Should the seat cover need to be replaced, only use **HEYNER MOBIL AUTOMOTIVE GMBH** seat covers.
- Always keep the instruction manual together with the child seat.

#### 5. Some final hints:

- Do not place heavy objects on the hat rack. In case of an accident, these could become dangerous objects and can injure you and your child.
- Luggage and other similar objects should therefore be stored away properly and be well fixed.
- Make sure, that all passengers in your vehicle have their seat-belt fastened, as unfastened passengers can become a big danger to children in case of an accident.
- Allow children breaks during long car journeys and make sure, they don't get out of the car alone without
- Always use the child safety lock system, if available in your car, to make it impossible for children to open the vehicle doors from the inside.
- Never leave your child unattended in or outside the car.

130.com.ua