



#### PHONES

(044) 360-7-130  
(050) 336-0-130  
(063) 788-0-130  
(067) 233-0-130  
(068) 282-0-130

# 130

COM.UA

## Internet store of autogoods



#### ICQ

294-0-130  
597-0-130

SKYPE  
km-130

CAR RECEIVERS — Receivers • Media receivers and stations • Native receivers • CD/DVD changers • FM-modulators/USB adapters • Flash memory • Facia plates and adapters • Antennas • Accessories |  
CAR AUDIO — Car audio speakers • Amplifiers • Subwoofers • Processors • Crossovers • Headphones • Accessories | TRIP COMPUTERS — Universal computers • Model computers • Accessories |  
GPS NAVIGATORS — Portable GPS • Built-in GPS • GPS modules • GPS trackers • Antennas for GPS navigators • Accessories | VIDEO — DVR • TV sets and monitors • Car TV tuners • Cameras • Videomodules • Transcoders • Car TV antennas • Accessories | SECURITY SYSTEMS — Car alarms • Bike alarms • Mechanical blockers • Immobilizers • Sensors • Accessories | OPTIC AND LIGHT — Xenon • Bixenon • Lamps • LED • Stroboscopes • Optic and Headlights • Washers • Light, rain sensors • Accessories | PARKTRONICS AND MIRRORS — Rear parktronic • Front parktronic • Combined parktronic • Rear-view mirrors • Accessories | HEATING AND COOLING — Seat heaters • Mirrors heaters • Screen-wipers heaters • Engine heaters • Auto-refrigerators • Air conditioning units • Accessories | TUNING — Vibro-isolation • Noise-isolation • Tint films • Accessories | ACCESSORIES — Radar-detectors • Handsfree, Bluetooth • Windowlifters • Compressors • Beeps, loudspeakers • Measuring instruments • Cleaners • Carsits • Miscellaneous | MOUNTING — Installation kits • Upholstery • Grilles • Tubes • Cable and wire • Tools • Miscellaneous | POWER — Batteries • Converters • Start-charging equipment • Capacitors • Accessories | MARINE AUDIO AND ELECTRONICS — Marine receivers • Marine audio speakers • Marine subwoofers • Marine amplifiers • Accessories | CAR CARE PRODUCTS — Additives • Washer fluid • Care accessories • Car polish • Flavors • Adhesives and sealants | LIQUID AND OIL — Motor oil • Transmission oil • Brake fluid • Antifreeze • Technical lubricant



In store "130" you can find and buy almost all necessary goods for your auto in Kyiv and other cities, delivery by ground and postal services. Our experienced consultants will provide you with exhaustive information and help you to chose the very particular thing. We are waiting for you at the address

<http://130.com.ua>

## Hardware Installation Guide

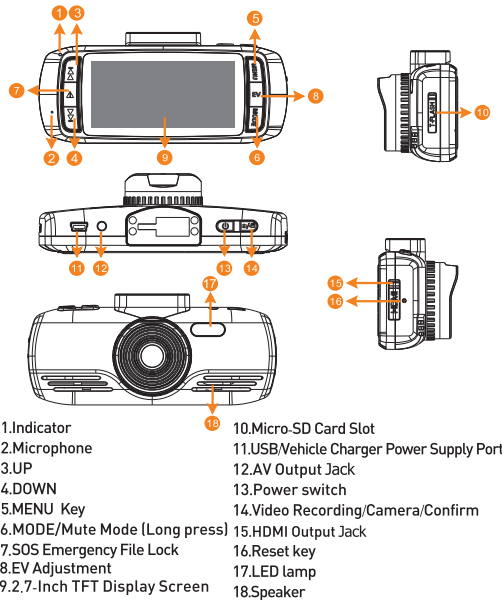
Thank you for purchasing Our company product, please following the instruction to use the device correctly.

Our company products are made of top materials to provide the best quality product with the best image quality to all customers.

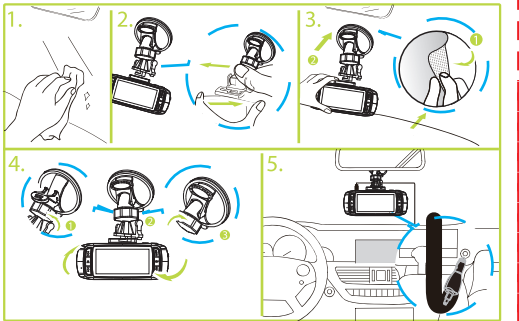
### Recording notes

1. Recording in a car without film on windshield can ensure the best image recorded.
2. Please keep the windshield clean to prevent bad influence on image quality.
3. If windshield wiper can't clean the windshield, please replace it with a new one, or the image quality in the rainy day will be influenced.
4. Image quality will be better while recording in a sunny day, but please note in backlight position the image will be darker, it's the normal reaction while image sensor face the light straightly.
5. In order to present a better video and audio quality, we suggest using the following player software: Storm video, windows Media Player, QuickTime Player.
6. After the machine high and low temperature testing; But in order to ensure a longer life, summer heat inside the car, such as the machine without work, the proposed move to the shade.

## Product Structure



## Installation and Fixation



## Power On/Off

Please connect the vehicle cigarette lighter and start the engine, the device will be switched on immediately.  
When car engine stooped or car power disconnected, the device will shutdown in 10 seconds automatically.

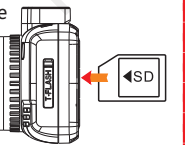
### Notes

1. For the users whose vehicle cigarette lighter keeps power supplying after the engine stopped, please unplug the car charger before leaving the vehicle.
2. Please use Class 6 or above Micro SD card

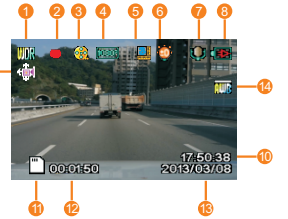
## Software Operation

### Switch On

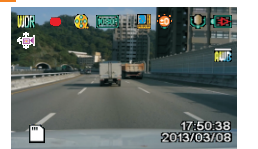
1. Insert the memory card
2. Connect the car charger into the vehicle cigarette lighter and the device
3. Start the vehicle.
4. The device be turned on, and start recording automatically.



## Recording image



## Standby Image



- |                                         |                     |
|-----------------------------------------|---------------------|
| 1.WDR works all time                    | 8.Power connected   |
| 2.Recording image                       | 9.Motion Detection  |
| 3.Recording mode                        | 10.Time             |
| 4.Resolution                            | 11.Memory Card icon |
| 5.Looping recording in 3 minutes length | 12.Recording time   |
| 6.Exposure                              | 13.Date             |
| 7.Microphone                            | 14.White Balance    |

## Recording Settings

After stopped recording, press MENU to enter the recording settings.

**WDR** : Toggle on the WDR function.

**Resolution** : Set the recording resolution.

**Exposure** : Set the exposure value.

**White Balance**: Adjust for ambient light.

**Record Audio** : Toggle on or off the sound recording function.

**Date Stamp** : Toggle on or off the data stamp function.

**Loop recording** : Set the video length in recording cycle mode, or toggle off record cycle function.

**Gsensor** : Set the sensitivity level of the G-sensor file protection .

**Motion Detection** : Toggle on or off the motion detection recording function.

**License plate display**: can display the registration number on the video.

**Password setting**: Set the system operation and to protect the password file security.

**Image Rotation**: Set the image rotation feature on or off.

## System Settings

After stopped recording, press MENU twice to enter the system setup.

**Format** : Format the memory card; please backup your data before formatting.

**Language** : Support multiple languages; you can choose the language according to your preferences.

**Date/Time** : Set the system time.

**Frequency** : Support 50Hz and 60Hz .

**IR LED** : Switch on or off LED light function.

**Beep Sound** : Switch on or off the system beep indicator.

**Screen saver** : Set the screen automatic off time, or set it as always on.

**TV Mode** : You can toggle between NTSC and PAL when in video output mode.

**Version** : Check the system version number.

**Default Setting** : Reset all the settings to the default state.

## Video Playback

### Video-Play Operation

1. After stopped recording, press MODE to enter the video-play mode.
2. Press UP or Down to select the desired video to play.
3. Press CONFIRM to start playing video.
4. Press CONFIRM again to pause the video.

### Delete Video

1. After stopped recording, press MODE to enter the video-play mode.
2. Press UP or Down to select the desired video to delete.
3. Press MENU, enter the menu to delete the video or delete all.

### Play on Computer

Recommended PC requirements for 1080P 30fps video playing:

1. intel Core 2 Duo 2.0GHz or above CPU
2. 2G or above DDRII RAM
3. Graphic card supports DirectX 10 or above